

## Daily Direct Steer and Heifer Slaughter Cattle Summary

For Trade on:

Friday, December 10, 2021

<a href="#">LM CT100</a>	<b>5-AREA</b>	<a href="#">LM CT109</a>
<b>Neg. Cash Volume:</b>	3,712	<b>Dressed Formula Vol:</b> 51,312
Live Steer Avg:	\$138.65	Steer/Heifer Avg: \$226.38
Live Heifer Avg:	\$139.37	<b>Dressed Neg. Grid Vol:</b> 2,311
Dressed Steer Avg:	\$219.82	Steer/Heifer Avg: \$218.48
Dressed Heifer Avg:	\$220.00	<b>TOTAL VOLUME:</b> 57,335
<a href="#">LM CT106</a>	<b>TOTAL WK TO DATE VOLUME:</b>	<b>268,760</b>
<b>Committed:</b>	<b>61,294</b>	<b>Delivered:</b> 100,457

<a href="#">LM CT118</a>	<b>TX-OK-NM</b>	<a href="#">LM CT109</a>
<b>Neg. Cash Volume:</b>	126	<b>Dressed Formula Vol:</b> 18,622
Live Steer Avg:	N/A	Steer/Heifer Avg: \$225.63
Live Heifer Avg:	N/A	<b>Dressed Neg. Grid Vol:</b> 0
Dressed Steer Avg:	N/A	Steer/Heifer Avg: N/A
Dressed Heifer Avg:	N/A	<b>TOTAL VOLUME:</b> 18,748
<a href="#">LM CT106</a>	<b>TOTAL WK TO DATE VOLUME:</b>	<b>71,728</b>
<b>Committed:</b>	<b>17,727</b>	<b>Delivered:</b> 20,476

<a href="#">LM CT121</a>	<b>KANSAS</b>	<a href="#">LM CT109</a>
<b>Neg. Cash Volume:</b>	0	<b>Dressed Formula Vol:</b> 17,153
Live Steer Avg:	N/A	Steer/Heifer Avg: \$228.21
Live Heifer Avg:	N/A	<b>Dressed Neg. Grid Vol:</b> 379
Dressed Steer Avg:	N/A	Steer/Heifer Avg: \$214.25
Dressed Heifer Avg:	N/A	<b>TOTAL VOLUME:</b> 17,532
<a href="#">LM CT106</a>	<b>TOTAL WK TO DATE VOLUME:</b>	<b>74,293</b>
<b>Committed:</b>	<b>13,834</b>	<b>Delivered:</b> 31,474

<a href="#">LM CT124</a>	<b>NEBRASKA</b>	<a href="#">LM CT109</a>
<b>Neg. Cash Volume:</b>	1015	<b>Dressed Formula Vol:</b> 7,536
Live Steer Avg:	N/A	Steer/Heifer Avg: \$225.76
Live Heifer Avg:	N/A	<b>Dressed Neg. Grid Vol:</b> 1,119
Dressed Steer Avg:	\$220.00	Steer/Heifer Avg: \$218.80
Dressed Heifer Avg:	\$220.00	<b>TOTAL VOLUME:</b> 9,670
<a href="#">LM CT106</a>	<b>TOTAL WK TO DATE VOLUME:</b>	<b>68,077</b>
<b>Committed:</b>	<b>12,307</b>	<b>Delivered:</b> 25,435

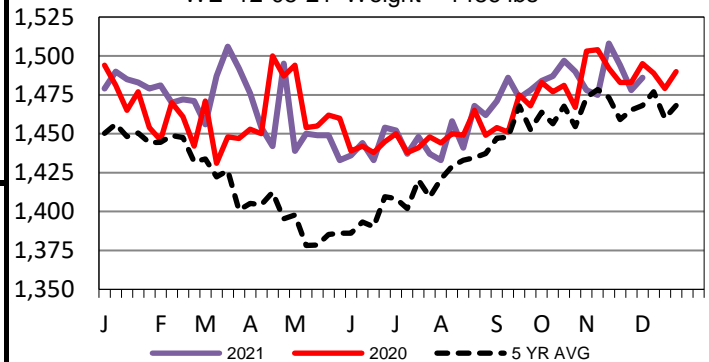
<a href="#">LM CT134</a>	<b>COLORADO</b>	<a href="#">LM CT109</a>
<b>Neg. Cash Volume:</b>	733	<b>Dressed Formula Vol:</b> 5,253
Live Steer Avg:	\$140.00	Steer/Heifer Avg: \$225.61
Live Heifer Avg:	\$140.00	<b>Dressed Neg. Grid Vol:</b> 90
Dressed Steer Avg:	\$220.00	Steer/Heifer Avg: \$214.02
Dressed Heifer Avg:	\$220.00	<b>TOTAL VOLUME:</b> 6,076
<a href="#">LM CT106</a>	<b>TOTAL WK TO DATE VOLUME:</b>	<b>22,114</b>
<b>Committed:</b>	<b>8,886</b>	<b>Delivered:</b> 5,922

<a href="#">LM CT137</a>	<b>IA-MN</b>	<a href="#">LM CT109</a>
<b>Neg. Cash Volume:</b>	1,838	<b>Dressed Formula Vol:</b> 3,006
Live Steer Avg:	\$138.43	Steer/Heifer Avg: \$223.57
Live Heifer Avg:	\$139.00	<b>Dressed Neg. Grid Vol:</b> 760
Dressed Steer Avg:	\$218.00	Steer/Heifer Avg: \$220.74
Dressed Heifer Avg:	N/A	<b>TOTAL VOLUME:</b> 5,604
<a href="#">LM CT106</a>	<b>TOTAL WK TO DATE VOLUME:</b>	<b>33,608</b>
<b>Committed:</b>	<b>8,540</b>	<b>Delivered:</b> 17,150

For Friday in the Northern Plains and Western Cornbelt negotiated cash trading was limited on light demand. Not enough purchases for a full market trend. Thursday in Nebraska and Western Cornbelt live purchases traded from 138.00-140.00 and dressed purchases traded at 220.00. Last week in Colorado live purchases traded at 142.00. For Friday in the Southern Plains negotiated cash trading was mostly inactive on very light demand. Not enough purchases for a market trend. Thursday live purchases traded at 140.00.

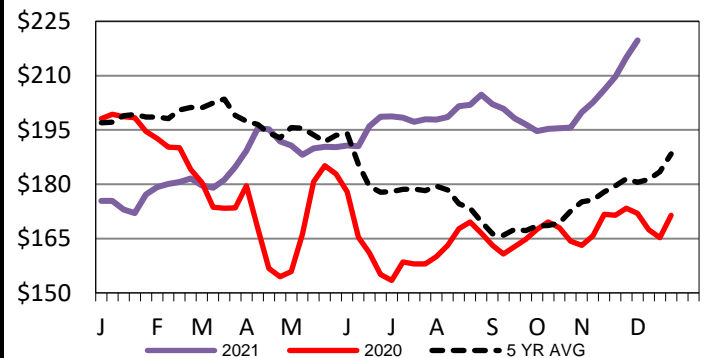
## 5-Area Negotiated Cash Live Steer Weights

WE 12-05-21 Weight = 1486 lbs



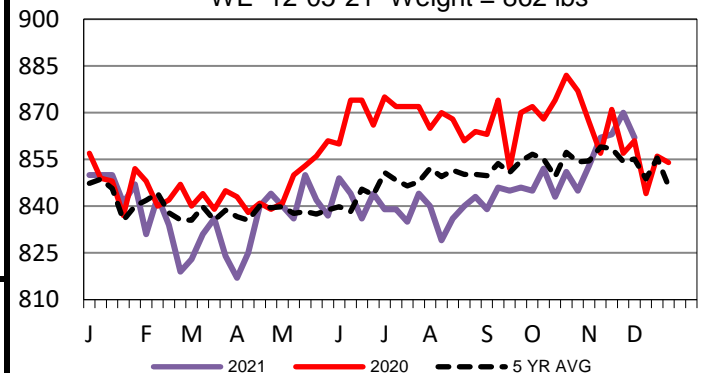
## Iowa-Minnesota Wkly Dress Steer Wtd Avg

WE 12-05-21 Price = \$219.73



## TX-OK-NM Formula Carcass Weights

WE 12-05-21 Weight = 862 lbs



## USDA Livestock, Poultry and Grain Market News

St. Joseph, Missouri

Phone: 816-676-7000

[stjoe.lpgmn@ams.usda.gov](mailto:stjoe.lpgmn@ams.usda.gov)