

## Daily Direct Steer and Heifer Slaughter Cattle Summary

For Trade on:

Thursday, December 09, 2021

<a href="#">LM CT100</a>	<b>5-AREA</b>	<a href="#">LM CT109</a>
<b>Neg. Cash Volume:</b>	32,329	<b>Dressed Formula Vol:</b> 36,641
Live Steer Avg:	\$139.40	Steer/Heifer Avg: \$228.23
Live Heifer Avg:	\$139.44	<b>Dressed Neg. Grid Vol:</b> 2,729
Dressed Steer Avg:	\$219.66	Steer/Heifer Avg: \$214.42
Dressed Heifer Avg:	\$219.91	<b>TOTAL VOLUME:</b> 71,699
<a href="#">LM CT106</a>	<b>TOTAL WK TO DATE VOLUME:</b>	<b>211,425</b>
<b>Committed:</b>	<b>86,779</b>	<b>Delivered:</b> 65,509

<a href="#">LM CT118</a>	<b>TX-OK-NM</b>	<a href="#">LM CT109</a>
<b>Neg. Cash Volume:</b>	3,127	<b>Dressed Formula Vol:</b> 11,106
Live Steer Avg:	\$140.00	Steer/Heifer Avg: \$226.12
Live Heifer Avg:	\$140.03	<b>Dressed Neg. Grid Vol:</b> 0
Dressed Steer Avg:	N/A	Steer/Heifer Avg: N/A
Dressed Heifer Avg:	N/A	<b>TOTAL VOLUME:</b> 14,233
<a href="#">LM CT106</a>	<b>TOTAL WK TO DATE VOLUME:</b>	<b>52,980</b>
<b>Committed:</b>	<b>8,780</b>	<b>Delivered:</b> 14,662

<a href="#">LM CT121</a>	<b>KANSAS</b>	<a href="#">LM CT109</a>
<b>Neg. Cash Volume:</b>	3,836	<b>Dressed Formula Vol:</b> 7,665
Live Steer Avg:	\$139.87	Steer/Heifer Avg: \$226.67
Live Heifer Avg:	\$138.60	<b>Dressed Neg. Grid Vol:</b> 1,174
Dressed Steer Avg:	\$220.00	Steer/Heifer Avg: \$213.73
Dressed Heifer Avg:	N/A	<b>TOTAL VOLUME:</b> 12,675
<a href="#">LM CT106</a>	<b>TOTAL WK TO DATE VOLUME:</b>	<b>56,761</b>
<b>Committed:</b>	<b>24,099</b>	<b>Delivered:</b> 16,417

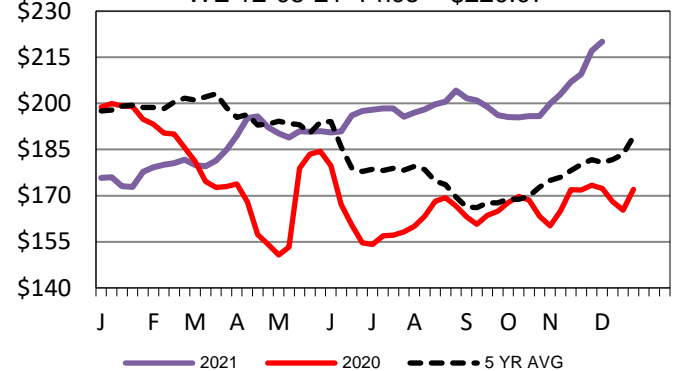
<a href="#">LM CT124</a>	<b>NEBRASKA</b>	<a href="#">LM CT109</a>
<b>Neg. Cash Volume:</b>	16,744	<b>Dressed Formula Vol:</b> 10,713
Live Steer Avg:	\$138.89	Steer/Heifer Avg: \$228.37
Live Heifer Avg:	\$139.42	<b>Dressed Neg. Grid Vol:</b> 989
Dressed Steer Avg:	\$219.65	Steer/Heifer Avg: \$213.10
Dressed Heifer Avg:	\$219.93	<b>TOTAL VOLUME:</b> 28,446
<a href="#">LM CT106</a>	<b>TOTAL WK TO DATE VOLUME:</b>	<b>58,407</b>
<b>Committed:</b>	<b>31,706</b>	<b>Delivered:</b> 17,339

<a href="#">LM CT134</a>	<b>COLORADO</b>	<a href="#">LM CT109</a>
<b>Neg. Cash Volume:</b>	858	<b>Dressed Formula Vol:</b> 4,011
Live Steer Avg:	\$140.00	Steer/Heifer Avg: \$241.73
Live Heifer Avg:	\$140.00	<b>Dressed Neg. Grid Vol:</b> 156
Dressed Steer Avg:	N/A	Steer/Heifer Avg: \$215.91
Dressed Heifer Avg:	N/A	<b>TOTAL VOLUME:</b> 5,025
<a href="#">LM CT106</a>	<b>TOTAL WK TO DATE VOLUME:</b>	<b>16,038</b>
<b>Committed:</b>	<b>6,370</b>	<b>Delivered:</b> 7,815

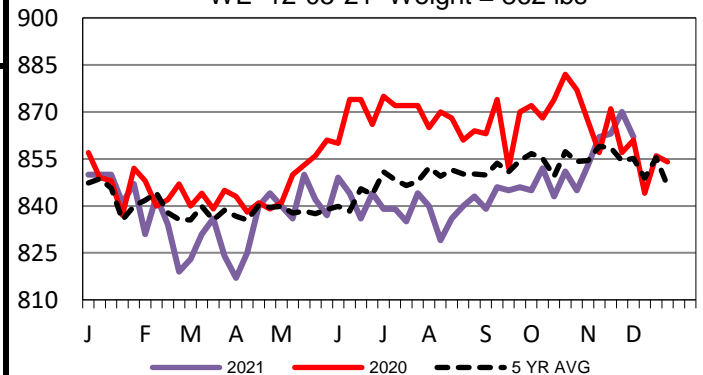
<a href="#">LM CT137</a>	<b>IA-MN</b>	<a href="#">LM CT109</a>
<b>Neg. Cash Volume:</b>	7,764	<b>Dressed Formula Vol:</b> 3,455
Live Steer Avg:	\$138.80	Steer/Heifer Avg: \$223.38
Live Heifer Avg:	\$138.66	<b>Dressed Neg. Grid Vol:</b> 410
Dressed Steer Avg:	\$219.69	Steer/Heifer Avg: \$219.02
Dressed Heifer Avg:	\$219.84	<b>TOTAL VOLUME:</b> 11,629
<a href="#">LM CT106</a>	<b>TOTAL WK TO DATE VOLUME:</b>	<b>28,004</b>
<b>Committed:</b>	<b>15,824</b>	<b>Delivered:</b> 9,276

Thursday in the Southern Plains and Western Cornbelt cash trading was slow on light demand. In the Southern Plains live traded steady at 140.00. In the Western Cornbelt, compared to last week, live traded steady to 2.00 lower from 138.00-140.00 and dressed traded steady at 220.00. In Nebraska cash trading was slow to moderate with moderate demand. Compared to the prior week live traded steady to 2.00 lower from 138.00-140.00 and dressed traded steady at 220.00. In Colorado cash trading was inactive with very light demand. Last week live traded at 142.00.

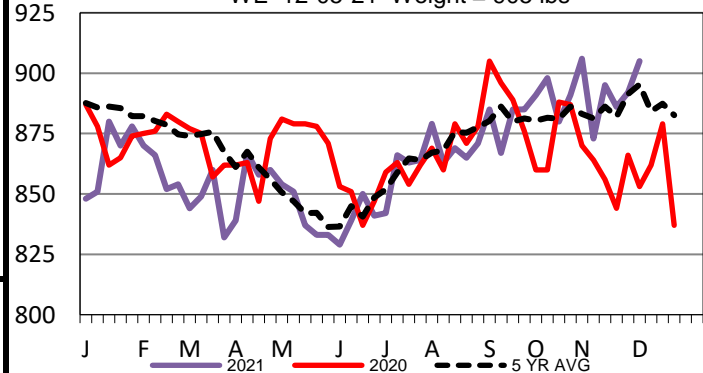
Nebraska Weekly DressedSteer Weighted Avg  
WE 12-05-21 Price = \$220.07



TX-OK-NM Formula Carcass Weights  
WE 12-05-21 Weight = 862 lbs



Colorado Formula Carcass Weights  
WE 12-05-21 Weight = 905 lbs



## USDA Livestock, Poultry and Grain Market News

St. Joseph, Missouri

Phone: 816-676-7000

[stjoe.lpgmn@ams.usda.gov](mailto:stjoe.lpgmn@ams.usda.gov)