

Daily Direct Steer and Heifer Slaughter Cattle Summary

For Trade on:

Friday, November 26, 2021

LM CT100	5-AREA	LM CT109
Neg. Cash Volume:	4,582	Dressed Formula Vol: 51,674
Live Steer Avg:	\$138.88	Steer/Heifer Avg: \$215.56
Live Heifer Avg:	\$139.69	Dressed Neg. Grid Vol: 2,668
Dressed Steer Avg:	\$218.00	Steer/Heifer Avg: \$216.78
Dressed Heifer Avg:	\$215.00	TOTAL VOLUME: 58,924
LM CT106	TOTAL WK TO DATE VOLUME:	269,834
Committed:	68,622	Delivered: 128,794

LM CT118	TX-OK-NM	LM CT109
Neg. Cash Volume:	1,159	Dressed Formula Vol: 11,860
Live Steer Avg:	\$139.87	Steer/Heifer Avg: \$213.68
Live Heifer Avg:	\$139.69	Dressed Neg. Grid Vol: 0
Dressed Steer Avg:	N/A	Steer/Heifer Avg: N/A
Dressed Heifer Avg:	N/A	TOTAL VOLUME: 13,019
LM CT106	TOTAL WK TO DATE VOLUME:	62,635
Committed:	13,117	Delivered: 31,102

LM CT121	KANSAS	LM CT109
Neg. Cash Volume:	1,111	Dressed Formula Vol: 16,143
Live Steer Avg:	\$140.00	Steer/Heifer Avg: \$214.98
Live Heifer Avg:	N/A	Dressed Neg. Grid Vol: 222
Dressed Steer Avg:	N/A	Steer/Heifer Avg: \$229.46
Dressed Heifer Avg:	N/A	TOTAL VOLUME: 17,476
LM CT106	TOTAL WK TO DATE VOLUME:	73,017
Committed:	27,078	Delivered: 33,694

LM CT124	NEBRASKA	LM CT109
Neg. Cash Volume:	666	Dressed Formula Vol: 13,093
Live Steer Avg:	N/A	Steer/Heifer Avg: \$214.20
Live Heifer Avg:	N/A	Dressed Neg. Grid Vol: 1,012
Dressed Steer Avg:	N/A	Steer/Heifer Avg: \$216.36
Dressed Heifer Avg:	N/A	TOTAL VOLUME: 14,771
LM CT106	TOTAL WK TO DATE VOLUME:	71,385
Committed:	13,979	Delivered: 32,493

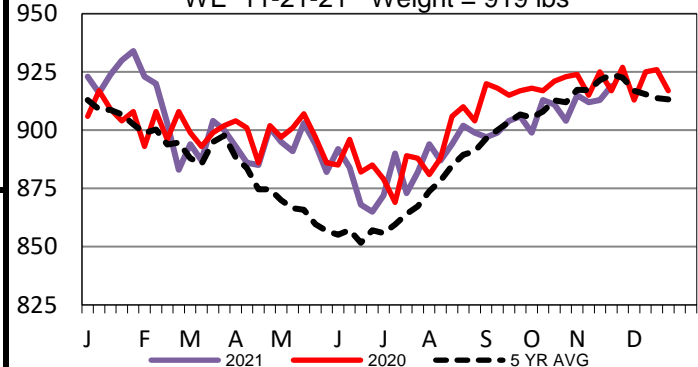
LM CT134	COLORADO	LM CT109
Neg. Cash Volume:	0	Dressed Formula Vol: 4,814
Live Steer Avg:	N/A	Steer/Heifer Avg: \$227.39
Live Heifer Avg:	N/A	Dressed Neg. Grid Vol: 155
Dressed Steer Avg:	N/A	Steer/Heifer Avg: \$229.48
Dressed Heifer Avg:	N/A	TOTAL VOLUME: 4,969
LM CT106	TOTAL WK TO DATE VOLUME:	19,554
Committed:	6,051	Delivered: 7,656

LM CT137	IA-MN	LM CT109
Neg. Cash Volume:	1,646	Dressed Formula Vol: 5,963
Live Steer Avg:	\$137.00	Steer/Heifer Avg: \$214.25
Live Heifer Avg:	N/A	Dressed Neg. Grid Vol: 1,336
Dressed Steer Avg:	\$218.00	Steer/Heifer Avg: \$213.93
Dressed Heifer Avg:	\$215.00	TOTAL VOLUME: 8,945
LM CT106	TOTAL WK TO DATE VOLUME:	43,999
Committed:	8,397	Delivered: 23,849

For Friday negotiated cash trading was limited on light demand in the Southern Plains. A few live purchases traded steady with Wednesday at 140.00. In Nebraska and Western Cornbelt negotiated cash trading was mostly inactive with light demand. Not enough purchases for a market trend. Wednesday in these regions saw live purchases from 138.00-140.00 and dressed purchases, in Nebraska, at 217.00. In the Western Cornbelt last week dressed purchases traded at 210.00. For Friday in the Colorado negotiated cash trading was at a standstill. Wednesday live purchases traded at 140.00.

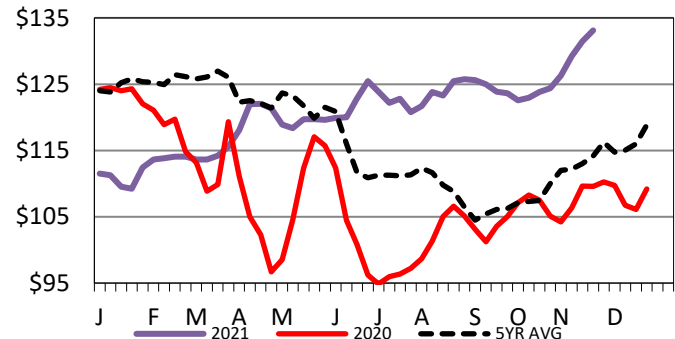
Nebraska Formula Carcass Weights

WE 11-21-21 Weight = 919 lbs



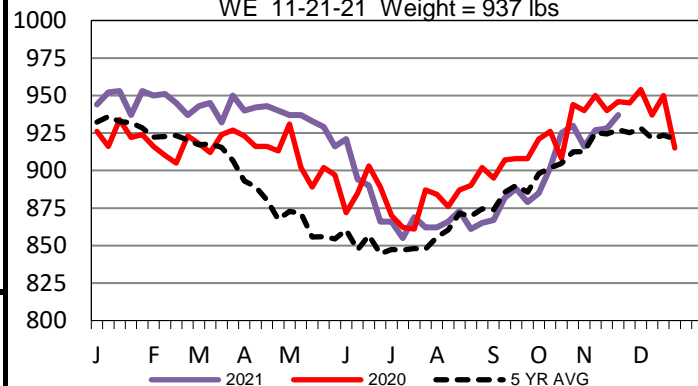
5-Area Live Steer Weighted Average

WE 11-21-21 Price = \$133.11



Iowa-Minnesota Formula Carcass Weights

WE 11-21-21 Weight = 937 lbs



USDA Livestock, Poultry and Grain Market News

St. Joseph, Missouri

Phone: 816-676-7000

stjoe.lpgmn@ams.usda.gov