

## Daily Direct Steer and Heifer Slaughter Cattle Summary

For Trade on:

Wednesday, November 24, 2021

<a href="#">LM CT100</a>	<b>5-AREA</b>	<a href="#">LM CT109</a>
<b>Neg. Cash Volume:</b>	49,665	<b>Dressed Formula Vol:</b> 26,685
Live Steer Avg:	\$139.16	Steer/Heifer Avg: \$219.11
Live Heifer Avg:	\$139.37	<b>Dressed Neg. Grid Vol:</b> 4,190
Dressed Steer Avg:	\$216.92	Steer/Heifer Avg: \$209.00
Dressed Heifer Avg:	\$217.17	<b>TOTAL VOLUME:</b> 80,540
<a href="#">LM CT106</a>	<b>TOTAL WK TO DATE VOLUME:</b>	<b>210,910</b>
<b>Committed:</b>	<b>100,171</b>	<b>Delivered:</b> 65,345

<a href="#">LM CT118</a>	<b>TX-OK-NM</b>	<a href="#">LM CT109</a>
<b>Neg. Cash Volume:</b>	6,889	<b>Dressed Formula Vol:</b> 7,722
Live Steer Avg:	\$140.00	Steer/Heifer Avg: \$213.96
Live Heifer Avg:	\$140.00	<b>Dressed Neg. Grid Vol:</b> 68
Dressed Steer Avg:	N/A	Steer/Heifer Avg: \$205.05
Dressed Heifer Avg:	N/A	<b>TOTAL VOLUME:</b> 14,679
<a href="#">LM CT106</a>	<b>TOTAL WK TO DATE VOLUME:</b>	<b>49,616</b>
<b>Committed:</b>	<b>24,623</b>	<b>Delivered:</b> 17,256

<a href="#">LM CT121</a>	<b>KANSAS</b>	<a href="#">LM CT109</a>
<b>Neg. Cash Volume:</b>	15,004	<b>Dressed Formula Vol:</b> 7,244
Live Steer Avg:	\$139.89	Steer/Heifer Avg: \$216.20
Live Heifer Avg:	\$139.89	<b>Dressed Neg. Grid Vol:</b> 286
Dressed Steer Avg:	\$218.00	Steer/Heifer Avg: \$202.40
Dressed Heifer Avg:	N/A	<b>TOTAL VOLUME:</b> 22,534
<a href="#">LM CT106</a>	<b>TOTAL WK TO DATE VOLUME:</b>	<b>55,541</b>
<b>Committed:</b>	<b>26,406</b>	<b>Delivered:</b> 17,528

<a href="#">LM CT124</a>	<b>NEBRASKA</b>	<a href="#">LM CT109</a>
<b>Neg. Cash Volume:</b>	17,128	<b>Dressed Formula Vol:</b> 7,389
Live Steer Avg:	\$138.32	Steer/Heifer Avg: \$219.46
Live Heifer Avg:	\$138.89	<b>Dressed Neg. Grid Vol:</b> 1,552
Dressed Steer Avg:	\$217.46	Steer/Heifer Avg: \$210.42
Dressed Heifer Avg:	\$217.38	<b>TOTAL VOLUME:</b> 26,069
<a href="#">LM CT106</a>	<b>TOTAL WK TO DATE VOLUME:</b>	<b>56,614</b>
<b>Committed:</b>	<b>29,525</b>	<b>Delivered:</b> 16,116

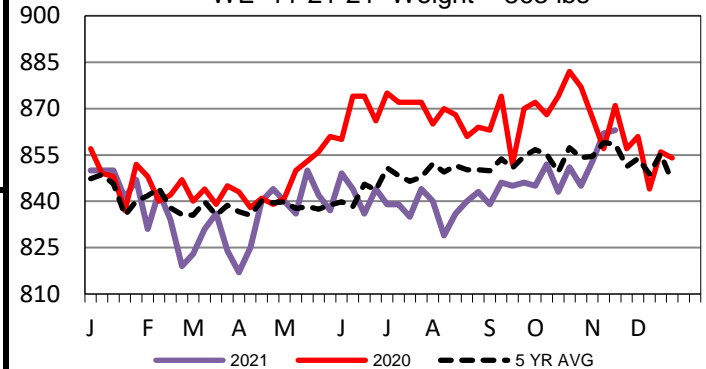
<a href="#">LM CT134</a>	<b>COLORADO</b>	<a href="#">LM CT109</a>
<b>Neg. Cash Volume:</b>	1,350	<b>Dressed Formula Vol:</b> 2,147
Live Steer Avg:	\$140.00	Steer/Heifer Avg: \$249.95
Live Heifer Avg:	\$140.00	<b>Dressed Neg. Grid Vol:</b> 397
Dressed Steer Avg:	N/A	Steer/Heifer Avg: \$209.66
Dressed Heifer Avg:	N/A	<b>TOTAL VOLUME:</b> 3,894
<a href="#">LM CT106</a>	<b>TOTAL WK TO DATE VOLUME:</b>	<b>14,585</b>
<b>Committed:</b>	<b>8,062</b>	<b>Delivered:</b> 5,634

<a href="#">LM CT137</a>	<b>IA-MN</b>	<a href="#">LM CT109</a>
<b>Neg. Cash Volume:</b>	9,294	<b>Dressed Formula Vol:</b> 2,460
Live Steer Avg:	\$138.28	Steer/Heifer Avg: \$216.16
Live Heifer Avg:	\$138.40	<b>Dressed Neg. Grid Vol:</b> 1,899
Dressed Steer Avg:	\$216.19	Steer/Heifer Avg: \$208.99
Dressed Heifer Avg:	\$216.68	<b>TOTAL VOLUME:</b> 13,653
<a href="#">LM CT106</a>	<b>TOTAL WK TO DATE VOLUME:</b>	<b>35,054</b>
<b>Committed:</b>	<b>11,555</b>	<b>Delivered:</b> 8,811

For Wednesday in the Southern Plains and Nebraska cash trading was active on very good demand. In Texas live traded 3.00-5.00 higher at 140.00. In Kansas live traded 7.00 higher at 140.00. In Nebraska live traded 2.00-3.00 higher from 138.00-140.00. Dressed traded 7.00 higher at 217.00, on a light test. For Wednesday in Colorado and Western Cornbelt cash trading was slow on moderate demand. In Colorado live traded 5.00-8.00 higher at 140.00. In the Western Cornbelt live traded 2.00 higher from 138.00-140.00. Last week dressed purchases traded at 210.00.

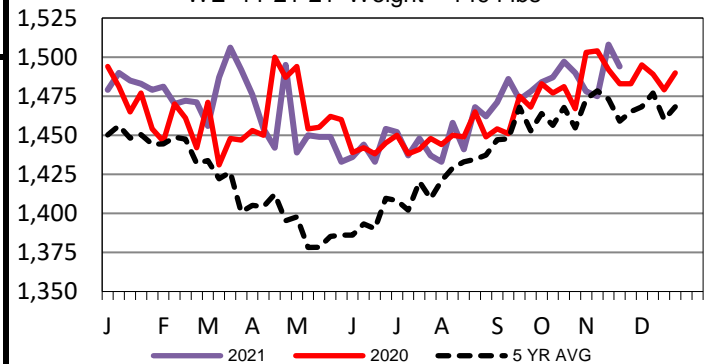
## TX-OK-NM Formula Carcass Weights

WE 11-21-21 Weight = 863 lbs



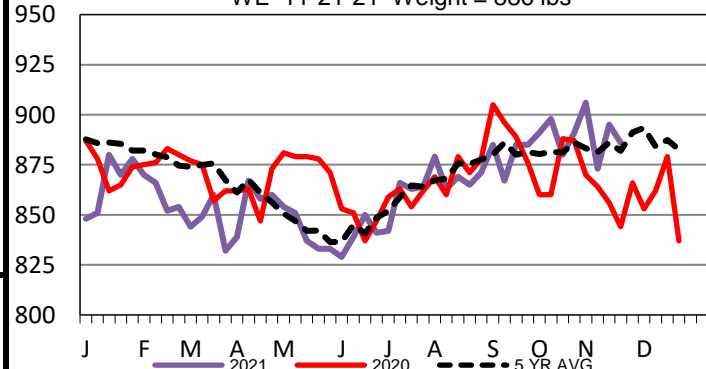
## 5-Area Negotiated Cash Live Steer Weights

WE 11-21-21 Weight = 1494 lbs



## Colorado Formula Carcass Weights

WE 11-21-21 Weight = 886 lbs



## USDA Livestock, Poultry and Grain Market News

St. Joseph, Missouri

Phone: 816-676-7000

[stjoe.lpgmn@ams.usda.gov](mailto:stjoe.lpgmn@ams.usda.gov)