

Daily Direct Steer and Heifer Slaughter Cattle Summary

For Trade on:

Friday, November 12, 2021

LM CT100	5-AREA	LM CT109
Neg. Cash Volume:	18,012	Dressed Formula Vol: 46,492
Live Steer Avg:	\$131.95	Steer/Heifer Avg: \$208.07
Live Heifer Avg:	\$131.98	Dressed Neg. Grid Vol: 4,256
Dressed Steer Avg:	\$204.92	Steer/Heifer Avg: \$203.23
Dressed Heifer Avg:	\$208.92	TOTAL VOLUME: 68,760
LM CT106	TOTAL WK TO DATE VOLUME:	318,311
Committed:	94,969	Delivered: 103,626

LM CT118	TX-OK-NM	LM CT109
Neg. Cash Volume:	5,794	Dressed Formula Vol: 17,124
Live Steer Avg:	\$132.00	Steer/Heifer Avg: \$206.81
Live Heifer Avg:	\$132.00	Dressed Neg. Grid Vol: 57
Dressed Steer Avg:	N/A	Steer/Heifer Avg: \$201.02
Dressed Heifer Avg:	N/A	TOTAL VOLUME: 22,975
LM CT106	TOTAL WK TO DATE VOLUME:	70,027
Committed:	32,881	Delivered: 26,271

LM CT121	KANSAS	LM CT109
Neg. Cash Volume:	6,568	Dressed Formula Vol: 15,034
Live Steer Avg:	\$132.00	Steer/Heifer Avg: \$208.62
Live Heifer Avg:	\$132.00	Dressed Neg. Grid Vol: 221
Dressed Steer Avg:	N/A	Steer/Heifer Avg: \$206.85
Dressed Heifer Avg:	N/A	TOTAL VOLUME: 21,823
LM CT106	TOTAL WK TO DATE VOLUME:	86,792
Committed:	29,887	Delivered: 32,151

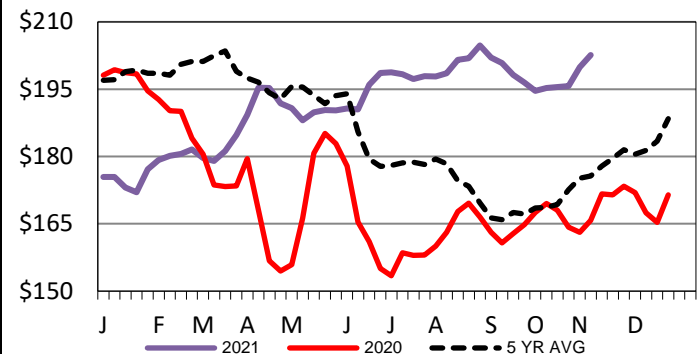
LM CT124	NEBRASKA	LM CT109
Neg. Cash Volume:	3,030	Dressed Formula Vol: 6,321
Live Steer Avg:	\$131.62	Steer/Heifer Avg: \$207.85
Live Heifer Avg:	\$132.00	Dressed Neg. Grid Vol: 1,466
Dressed Steer Avg:	\$207.00	Steer/Heifer Avg: \$203.16
Dressed Heifer Avg:	N/A	TOTAL VOLUME: 10,817
LM CT106	TOTAL WK TO DATE VOLUME:	77,586
Committed:	19,824	Delivered: 23,390

LM CT134	COLORADO	LM CT109
Neg. Cash Volume:	1,224	Dressed Formula Vol: 5,504
Live Steer Avg:	\$132.00	Steer/Heifer Avg: \$210.96
Live Heifer Avg:	\$132.00	Dressed Neg. Grid Vol: 234
Dressed Steer Avg:	N/A	Steer/Heifer Avg: \$196.22
Dressed Heifer Avg:	N/A	TOTAL VOLUME: 6,962
LM CT106	TOTAL WK TO DATE VOLUME:	25,054
Committed:	3,141	Delivered: 5,223

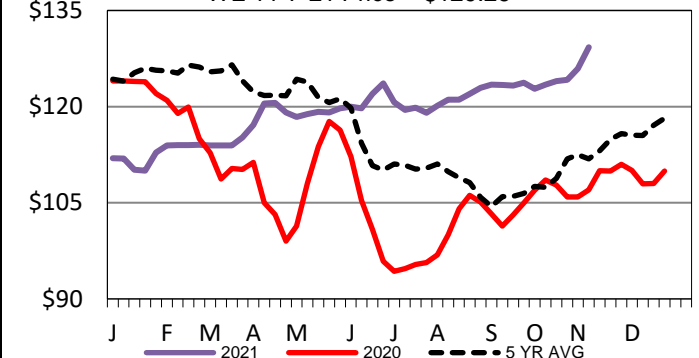
LM CT137	IA-MN	LM CT109
Neg. Cash Volume:	1,396	Dressed Formula Vol: 2,748
Live Steer Avg:	\$132.11	Steer/Heifer Avg: \$207.87
Live Heifer Avg:	\$131.57	Dressed Neg. Grid Vol: 2,278
Dressed Steer Avg:	\$204.00	Steer/Heifer Avg: \$203.69
Dressed Heifer Avg:	\$208.92	TOTAL VOLUME: 6,422
LM CT106	TOTAL WK TO DATE VOLUME:	59,972
Committed:	9,236	Delivered: 16,591

For Friday in the Southern Plains cash trading was slow on light demand. In the Southern Plains live traded steady to 1.00 higher at 132.00. In Nebraska and Colorado cash trading was slow on light demand. In Nebraska live traded steady at 132.00. The last dressed market was on Wednesday with trades at 207.00. In Colorado live traded at 132.00. Friday in the Western Cornbelt cash trading limited with light demand. The last live market on Thursday with trades at 132.00. The last reported dressed market was on Wednesday with trades at 207.00.

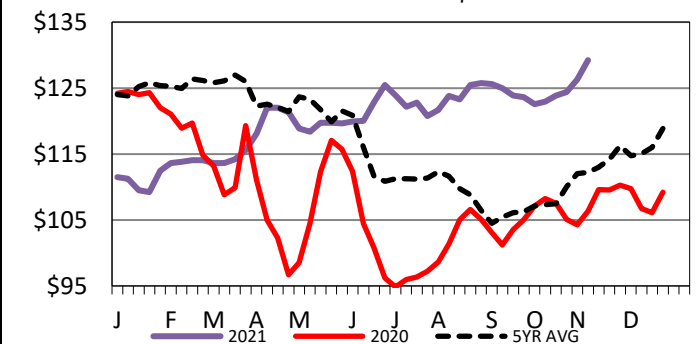
Iowa-Minnesota Wkly Dress Steer Wtd Avg
WE 11-7-21 Price = \$202.61



Kansas Weekly Live Steer Weighted Average
WE 11-7-21 Price = \$129.26



5-Area Live Steer Weighted Average
WE 11-7-21 Price = \$129.23



USDA Livestock, Poultry and Grain Market News

St. Joseph, Missouri

Phone: 816-676-7000

stjoe.lpgmn@ams.usda.gov