

Daily Direct Steer and Heifer Slaughter Cattle Summary

For Trade on:

Friday, November 05, 2021

LM CT100	5-AREA	LM CT109
Neg. Cash Volume:	44,195	Dressed Formula Vol: 44,476
Live Steer Avg:	\$129.95	Steer/Heifer Avg: \$203.01
Live Heifer Avg:	\$129.93	Dressed Neg. Grid Vol: 2,957
Dressed Steer Avg:	\$203.57	Steer/Heifer Avg: \$202.07
Dressed Heifer Avg:	\$204.00	TOTAL VOLUME: 91,628
LM CT106	TOTAL WK TO DATE VOLUME:	302,591
Committed:	122,434	Delivered: 88,051

LM CT118	TX-OK-NM	LM CT109
Neg. Cash Volume:	6,046	Dressed Formula Vol: 15,198
Live Steer Avg:	\$129.96	Steer/Heifer Avg: \$200.38
Live Heifer Avg:	\$130.00	Dressed Neg. Grid Vol: 0
Dressed Steer Avg:	N/A	Steer/Heifer Avg: N/A
Dressed Heifer Avg:	N/A	TOTAL VOLUME: 21,244
LM CT106	TOTAL WK TO DATE VOLUME:	72,918
Committed:	36,977	Delivered: 25,883

LM CT121	KANSAS	LM CT109
Neg. Cash Volume:	9,776	Dressed Formula Vol: 13,846
Live Steer Avg:	\$130.00	Steer/Heifer Avg: \$203.88
Live Heifer Avg:	\$129.33	Dressed Neg. Grid Vol: 0
Dressed Steer Avg:	N/A	Steer/Heifer Avg: N/A
Dressed Heifer Avg:	N/A	TOTAL VOLUME: 23,622
LM CT106	TOTAL WK TO DATE VOLUME:	87,540
Committed:	33,552	Delivered: 23,929

LM CT124	NEBRASKA	LM CT109
Neg. Cash Volume:	18,444	Dressed Formula Vol: 6,636
Live Steer Avg:	\$129.91	Steer/Heifer Avg: \$203.71
Live Heifer Avg:	\$129.94	Dressed Neg. Grid Vol: 712
Dressed Steer Avg:	\$203.53	Steer/Heifer Avg: \$201.83
Dressed Heifer Avg:	\$204.00	TOTAL VOLUME: 25,792
LM CT106	TOTAL WK TO DATE VOLUME:	74,118
Committed:	31,919	Delivered: 20,866

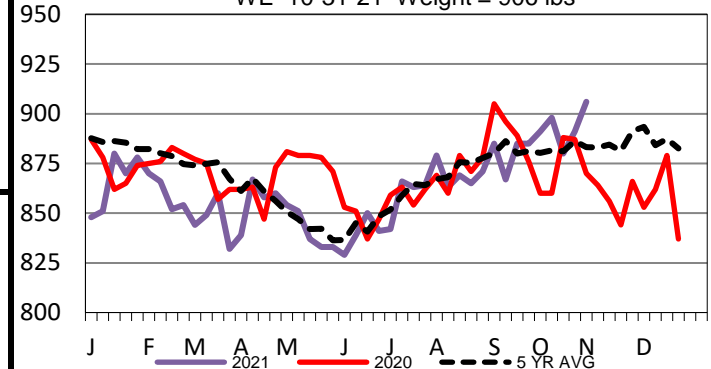
LM CT134	COLORADO	LM CT109
Neg. Cash Volume:	0	Dressed Formula Vol: 3,908
Live Steer Avg:	N/A	Steer/Heifer Avg: \$207.75
Live Heifer Avg:	N/A	Dressed Neg. Grid Vol: 0
Dressed Steer Avg:	N/A	Steer/Heifer Avg: N/A
Dressed Heifer Avg:	N/A	TOTAL VOLUME: 3,908
LM CT106	TOTAL WK TO DATE VOLUME:	23,304
Committed:	5,472	Delivered: 3,067

LM CT137	IA-MN	LM CT109
Neg. Cash Volume:	9,929	Dressed Formula Vol: 5,141
Live Steer Avg:	\$129.93	Steer/Heifer Avg: \$204.00
Live Heifer Avg:	\$129.79	Dressed Neg. Grid Vol: 2,245
Dressed Steer Avg:	\$203.71	Steer/Heifer Avg: \$202.15
Dressed Heifer Avg:	\$204.00	TOTAL VOLUME: 17,315
LM CT106	TOTAL WK TO DATE VOLUME:	45,466
Committed:	14,514	Delivered: 14,306

For Friday in the Southern Plains cash trading and demand were moderate. Compared to Tuesday live traded 2.00 higher at 130.00. In Nebraska and Western Cornbelt cash trading was moderate on good demand. In Nebraska, compared to last week, live traded 3.00 higher at 130.00 and dressed traded 4.00 higher at 204.00. In the Western Cornbelt, compared to last week, live traded 3.00-4.00 higher at 130.00 and dressed traded 4.00 higher at 204.00. A light test of dressed purchases was noted in the Western Cornbelt.

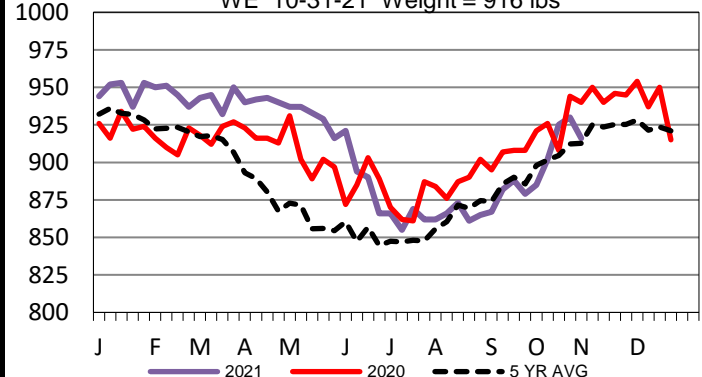
Colorado Formula Carcass Weights

WE 10-31-21 Weight = 906 lbs



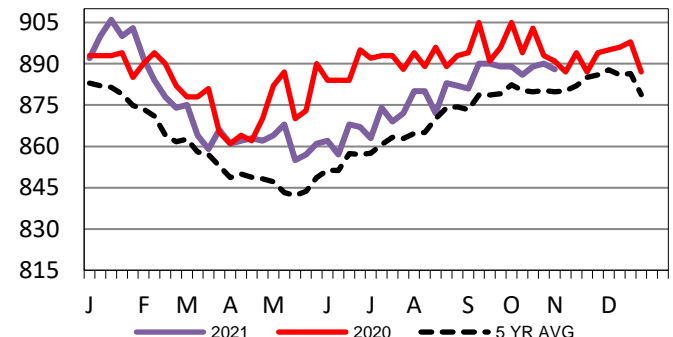
Iowa-Minnesota Formula Carcass Weights

WE 10-31-21 Weight = 916 lbs



Kansas Formula Carcass Weights

WE 10-31-21 Weight = 888 lbs



USDA Livestock, Poultry and Grain Market News

St. Joseph, Missouri

Phone: 816-676-7000

stjoe.lpgmn@ams.usda.gov