

Daily Direct Steer and Heifer Slaughter Cattle Summary

For Trade on:

Wednesday, November 03, 2021

LM CT100	5-AREA	LM CT109
Neg. Cash Volume:	12,380	Dressed Formula Vol: 24,318
Live Steer Avg:	\$128.42	Steer/Heifer Avg: \$205.51
Live Heifer Avg:	\$127.27	Dressed Neg. Grid Vol: 6,341
Dressed Steer Avg:	\$202.00	Steer/Heifer Avg: \$199.40
Dressed Heifer Avg:	\$201.48	TOTAL VOLUME: 43,039
LM CT106	TOTAL WK TO DATE VOLUME:	154,505
Committed:	55,680	Delivered: 68,891

LM CT118	TX-OK-NM	LM CT109
Neg. Cash Volume:	1,173	Dressed Formula Vol: 9,256
Live Steer Avg:	\$128.04	Steer/Heifer Avg: \$201.34
Live Heifer Avg:	\$126.75	Dressed Neg. Grid Vol: 702
Dressed Steer Avg:	N/A	Steer/Heifer Avg: \$195.62
Dressed Heifer Avg:	N/A	TOTAL VOLUME: 11,131
LM CT106	TOTAL WK TO DATE VOLUME:	39,386
Committed:	11,368	Delivered: 18,893

LM CT121	KANSAS	LM CT109
Neg. Cash Volume:	91	Dressed Formula Vol: 6,892
Live Steer Avg:	\$128.00	Steer/Heifer Avg: \$201.76
Live Heifer Avg:	N/A	Dressed Neg. Grid Vol: 879
Dressed Steer Avg:	N/A	Steer/Heifer Avg: \$197.15
Dressed Heifer Avg:	N/A	TOTAL VOLUME: 7,862
LM CT106	TOTAL WK TO DATE VOLUME:	51,994
Committed:	11,289	Delivered: 17,872

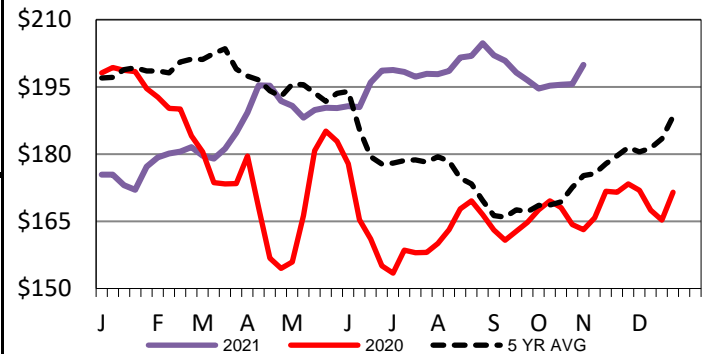
LM CT124	NEBRASKA	LM CT109
Neg. Cash Volume:	5,911	Dressed Formula Vol: 4,349
Live Steer Avg:	\$128.78	Steer/Heifer Avg: \$206.39
Live Heifer Avg:	\$127.46	Dressed Neg. Grid Vol: 1,476
Dressed Steer Avg:	\$202.00	Steer/Heifer Avg: \$201.15
Dressed Heifer Avg:	\$201.83	TOTAL VOLUME: 11,736
LM CT106	TOTAL WK TO DATE VOLUME:	31,610
Committed:	15,713	Delivered: 15,872

LM CT134	COLORADO	LM CT109
Neg. Cash Volume:	0	Dressed Formula Vol: 2,089
Live Steer Avg:	N/A	Steer/Heifer Avg: \$236.71
Live Heifer Avg:	N/A	Dressed Neg. Grid Vol: 1,078
Dressed Steer Avg:	N/A	Steer/Heifer Avg: \$196.89
Dressed Heifer Avg:	N/A	TOTAL VOLUME: 3,167
LM CT106	TOTAL WK TO DATE VOLUME:	13,310
Committed:	7,275	Delivered: 7,581

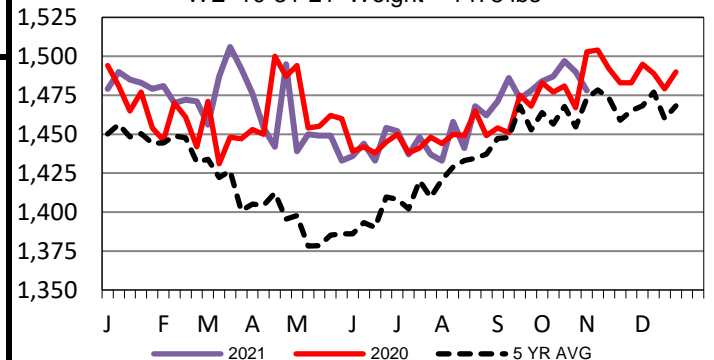
LM CT137	IA-MN	LM CT109
Neg. Cash Volume:	5,205	Dressed Formula Vol: 1,889
Live Steer Avg:	\$128.24	Steer/Heifer Avg: \$203.69
Live Heifer Avg:	\$128.00	Dressed Neg. Grid Vol: 2,206
Dressed Steer Avg:	\$202.00	Steer/Heifer Avg: \$201.55
Dressed Heifer Avg:	\$200.98	TOTAL VOLUME: 9,300
LM CT106	TOTAL WK TO DATE VOLUME:	18,439
Committed:	10,035	Delivered: 8,673

For Wednesday in Nebraska and Western Cornbelt cash trading was slow with moderate demand. In Nebraska a few live and dressed traded at 129.00 and 202.00, respectively. In the Western Cornbelt a few live and dressed traded at 128.00 and 202.00, respectively. Not enough purchases in for a full market trend. Last week in Nebraska live and dressed traded at 127.00 and at 200.00, respectively. In the Western Cornbelt last week live and dressed traded from 126.00-127.00 and at 200.00, respectively. Wednesday in the Southern Plains cash trading was mostly inactive on light demand. The last reportable market in the Southern Plains was on Tuesday with live at 128.00.

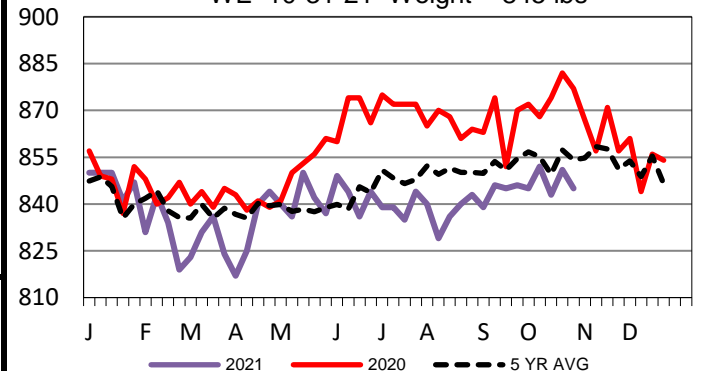
Iowa-Minnesota Wkly Dress Steer Wtd Avg
WE 10-31-21 Price = \$199.91



5-Area Negotiated Cash Live Steer Weights
WE 10-31-21 Weight = 1478 lbs



TX-OK-NM Formula Carcass Weights
WE 10-31-21 Weight = 845 lbs



USDA Livestock, Poultry and Grain Market News

St. Joseph, Missouri

Phone: 816-676-7000

stjoe.lpgmn@ams.usda.gov