

Daily Direct Steer and Heifer Slaughter Cattle Summary

For Trade on:

Tuesday, November 02, 2021

LM CT100	5-AREA	LM CT109
Neg. Cash Volume:	13,618	Dressed Formula Vol: 32,360
Live Steer Avg:	\$127.96	Steer/Heifer Avg: \$201.76
Live Heifer Avg:	\$127.90	Dressed Neg. Grid Vol: 2,632
Dressed Steer Avg:	\$201.69	Steer/Heifer Avg: \$200.06
Dressed Heifer Avg:	N/A	TOTAL VOLUME: 48,610
LM CT106	TOTAL WK TO DATE VOLUME:	111,466
Committed:	79,366	Delivered: 72,930

LM CT118	TX-OK-NM	LM CT109
Neg. Cash Volume:	3,242	Dressed Formula Vol: 8,235
Live Steer Avg:	\$128.00	Steer/Heifer Avg: \$199.03
Live Heifer Avg:	N/A	Dressed Neg. Grid Vol: 242
Dressed Steer Avg:	N/A	Steer/Heifer Avg: \$197.09
Dressed Heifer Avg:	N/A	TOTAL VOLUME: 11,719
LM CT106	TOTAL WK TO DATE VOLUME:	28,255
Committed:	25,844	Delivered: 21,329

LM CT121	KANSAS	LM CT109
Neg. Cash Volume:	5,803	Dressed Formula Vol: 12,462
Live Steer Avg:	\$128.00	Steer/Heifer Avg: \$200.49
Live Heifer Avg:	\$127.90	Dressed Neg. Grid Vol: 79
Dressed Steer Avg:	\$200.00	Steer/Heifer Avg: \$204.70
Dressed Heifer Avg:	N/A	TOTAL VOLUME: 18,344
LM CT106	TOTAL WK TO DATE VOLUME:	44,132
Committed:	28,592	Delivered: 17,709

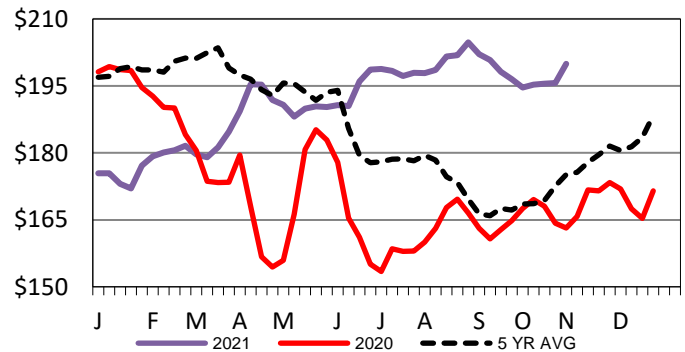
LM CT124	NEBRASKA	LM CT109
Neg. Cash Volume:	2,466	Dressed Formula Vol: 6,258
Live Steer Avg:	\$128.00	Steer/Heifer Avg: \$208.42
Live Heifer Avg:	\$127.91	Dressed Neg. Grid Vol: 1,166
Dressed Steer Avg:	N/A	Steer/Heifer Avg: \$198.93
Dressed Heifer Avg:	N/A	TOTAL VOLUME: 9,890
LM CT106	TOTAL WK TO DATE VOLUME:	19,974
Committed:	7,810	Delivered: 15,041

LM CT134	COLORADO	LM CT109
Neg. Cash Volume:	0	Dressed Formula Vol: 2,784
Live Steer Avg:	N/A	Steer/Heifer Avg: \$197.34
Live Heifer Avg:	N/A	Dressed Neg. Grid Vol: 84
Dressed Steer Avg:	N/A	Steer/Heifer Avg: \$204.81
Dressed Heifer Avg:	N/A	TOTAL VOLUME: 2,868
LM CT106	TOTAL WK TO DATE VOLUME:	10,143
Committed:	11,713	Delivered: 8,742

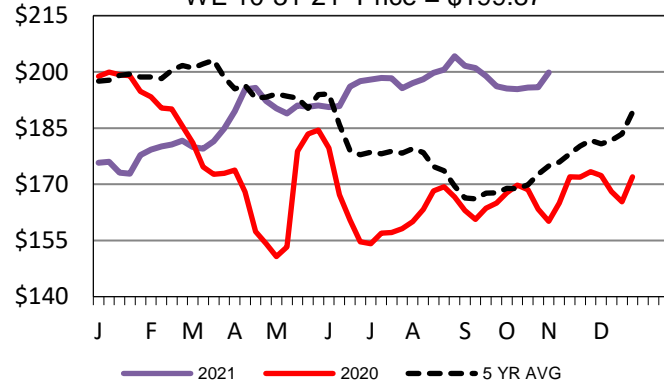
LM CT137	IA-MN	LM CT109
Neg. Cash Volume:	2,107	Dressed Formula Vol: 2,621
Live Steer Avg:	\$127.22	Steer/Heifer Avg: \$205.12
Live Heifer Avg:	\$128.00	Dressed Neg. Grid Vol: 1,061
Dressed Steer Avg:	\$202.00	Steer/Heifer Avg: \$201.25
Dressed Heifer Avg:	N/A	TOTAL VOLUME: 5,789
LM CT106	TOTAL WK TO DATE VOLUME:	9,139
Committed:	5,407	Delivered: 10,109

For Tuesday cash trading was slow with moderate demand in the Southern Plains. Compared to last week in Texas live traded 2.00-4.00 higher at 128.00. In Kansas compared to the prior week live traded 2.00 higher at 128.00. A light test was noted in both regions. In Nebraska and Western Cornbelt cash trading was limited on light demand. Last week in Nebraska live and dressed traded at 127.00 and at 200.00, respectively. In the Western Cornbelt last week live and dressed traded from 126.00-127.00 and at 200.00, respectively

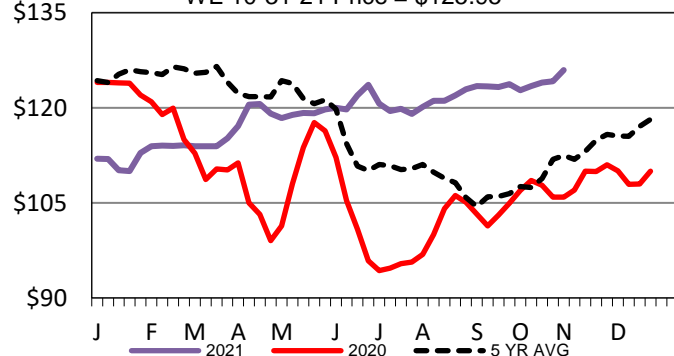
Iowa-Minnesota Wkly Dress Steer Wtd Avg WE 10-31-21 Price = \$199.91



Nebraska Weekly Dressed Steer Weighted Avg WE 10-31-21 Price = \$199.87



Kansas Weekly Live Steer Weighted Average WE 10-31-21 Price = \$125.95



USDA Livestock, Poultry and Grain Market News

St. Joseph, Missouri

Phone: 816-676-7000

stjoe.lpgmn@ams.usda.gov