

## Daily Direct Steer and Heifer Slaughter Cattle Summary

For Trade on:

Monday, November 01, 2021

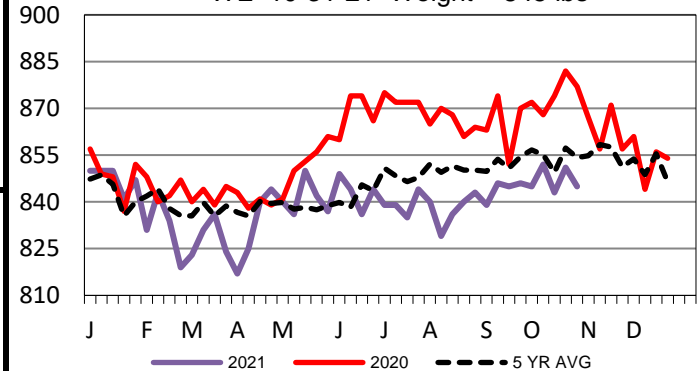
<a href="#">LM CT100</a>	<b>5-AREA</b>	<a href="#">LM CT109</a>
<b>Neg. Cash Volume:</b>	119	<b>Dressed Formula Vol:</b> 56,060
Live Steer Avg:	N/A	Steer/Heifer Avg: \$199.05
Live Heifer Avg:	N/A	<b>Dressed Neg. Grid Vol:</b> 6,677
Dressed Steer Avg:	\$200.00	Steer/Heifer Avg: \$199.36
Dressed Heifer Avg:	N/A	<b>TOTAL VOLUME:</b> 62,856
<a href="#">LM CT106</a>	<b>TOTAL WK TO DATE VOLUME:</b>	<b>62,856</b>
<b>Committed:</b>	<b>47,872</b>	<b>Delivered:</b> 68,198

For Monday negotiated cash trading was at a standstill in the Southern Plains and Nebraska. In the Western Cornbelt negotiated cash trading was mostly inactive with very light demand. Not enough purchases for a market trend. Last week in the Texas Panhandle live purchases traded from 124.00-126.00. In Kansas live purchases traded at 126.00 for the prior week. For the previous week in Nebraska live and dressed purchases traded at 127.00 and at 200.00, respectively. In the Western Cornbelt last week live and dressed purchases traded from 126.00-127.00 and at 200.00.

<a href="#">LM CT118</a>	<b>TX-OK-NM</b>	<a href="#">LM CT109</a>
<b>Neg. Cash Volume:</b>	0	<b>Dressed Formula Vol:</b> 16,096
Live Steer Avg:	N/A	Steer/Heifer Avg: \$196.94
Live Heifer Avg:	N/A	<b>Dressed Neg. Grid Vol:</b> 440
Dressed Steer Avg:	N/A	Steer/Heifer Avg: \$198.70
Dressed Heifer Avg:	N/A	<b>TOTAL VOLUME:</b> 16,536
<a href="#">LM CT106</a>	<b>TOTAL WK TO DATE VOLUME:</b>	<b>16,536</b>
<b>Committed:</b>	<b>4,324</b>	<b>Delivered:</b> 15,425

## TX-OK-NM Formula Carcass Weights

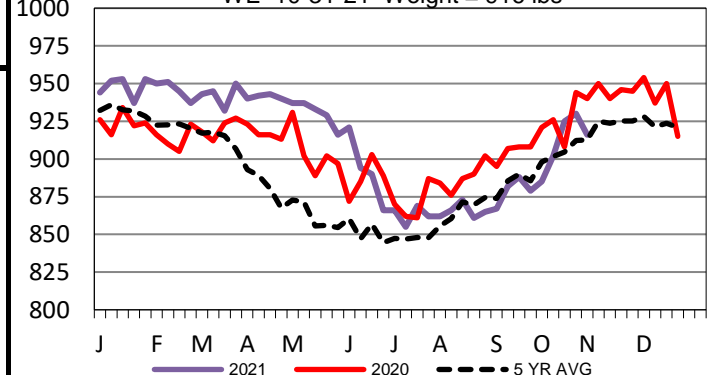
WE 10-31-21 Weight = 845 lbs



<a href="#">LM CT121</a>	<b>KANSAS</b>	<a href="#">LM CT109</a>
<b>Neg. Cash Volume:</b>	0	<b>Dressed Formula Vol:</b> 23,892
Live Steer Avg:	N/A	Steer/Heifer Avg: \$198.45
Live Heifer Avg:	N/A	<b>Dressed Neg. Grid Vol:</b> 1,896
Dressed Steer Avg:	N/A	Steer/Heifer Avg: \$198.00
Dressed Heifer Avg:	N/A	<b>TOTAL VOLUME:</b> 25,788
<a href="#">LM CT106</a>	<b>TOTAL WK TO DATE VOLUME:</b>	<b>25,788</b>
<b>Committed:</b>	<b>14,209</b>	<b>Delivered:</b> 19,630

## Iowa-Minnesota Formula Carcass Weights

WE 10-31-21 Weight = 916 lbs

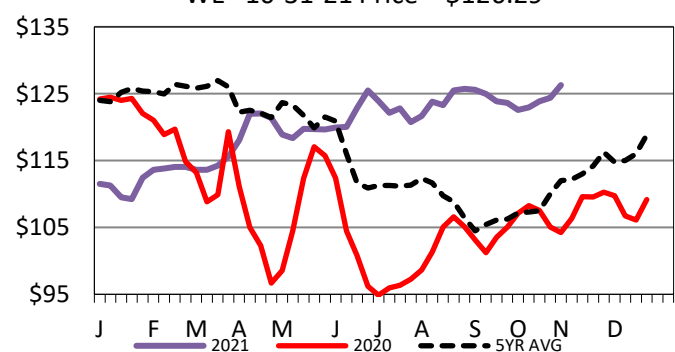


<a href="#">LM CT124</a>	<b>NEBRASKA</b>	<a href="#">LM CT109</a>
<b>Neg. Cash Volume:</b>	0	<b>Dressed Formula Vol:</b> 8,007
Live Steer Avg:	N/A	Steer/Heifer Avg: \$204.26
Live Heifer Avg:	N/A	<b>Dressed Neg. Grid Vol:</b> 2,077
Dressed Steer Avg:	N/A	Steer/Heifer Avg: \$198.97
Dressed Heifer Avg:	N/A	<b>TOTAL VOLUME:</b> 10,084
<a href="#">LM CT106</a>	<b>TOTAL WK TO DATE VOLUME:</b>	<b>10,084</b>
<b>Committed:</b>	<b>15,338</b>	<b>Delivered:</b> 15,069

<a href="#">LM CT134</a>	<b>COLORADO</b>	<a href="#">LM CT109</a>
<b>Neg. Cash Volume:</b>	0	<b>Dressed Formula Vol:</b> 6,348
Live Steer Avg:	N/A	Steer/Heifer Avg: \$199.05
Live Heifer Avg:	N/A	<b>Dressed Neg. Grid Vol:</b> 927
Dressed Steer Avg:	N/A	Steer/Heifer Avg: \$200.19
Dressed Heifer Avg:	N/A	<b>TOTAL VOLUME:</b> 7,275
<a href="#">LM CT106</a>	<b>TOTAL WK TO DATE VOLUME:</b>	<b>7,275</b>
<b>Committed:</b>	<b>1,232</b>	<b>Delivered:</b> 8,754

## 5-Area Live Steer Weighted Average

WE 10-31-21 Price = \$126.29



<a href="#">LM CT137</a>	<b>IA-MN</b>	<a href="#">LM CT109</a>
<b>Neg. Cash Volume:</b>	119	<b>Dressed Formula Vol:</b> 1,894
Live Steer Avg:	N/A	Steer/Heifer Avg: \$202.60
Live Heifer Avg:	N/A	<b>Dressed Neg. Grid Vol:</b> 1,337
Dressed Steer Avg:	\$200.00	Steer/Heifer Avg: \$201.51
Dressed Heifer Avg:	N/A	<b>TOTAL VOLUME:</b> 3,350
<a href="#">LM CT106</a>	<b>TOTAL WK TO DATE VOLUME:</b>	<b>3,350</b>
<b>Committed:</b>	<b>12,769</b>	<b>Delivered:</b> 9,320

## USDA Livestock, Poultry and Grain Market News

St. Joseph, Missouri

Phone: 816-676-7000

[stjoe.lpgmn@ams.usda.gov](mailto:stjoe.lpgmn@ams.usda.gov)