

## Daily Direct Steer and Heifer Slaughter Cattle Summary

For Trade on:

Wednesday, October 27, 2021

<a href="#">LM CT100</a>	<b>5-AREA</b>	<a href="#">LM CT109</a>
<b>Neg. Cash Volume:</b>	64,512	<b>Dressed Formula Vol:</b> 30,663
Live Steer Avg:	\$126.53	Steer/Heifer Avg: \$202.90
Live Heifer Avg:	\$126.39	<b>Dressed Neg. Grid Vol:</b> 4,693
Dressed Steer Avg:	\$199.91	Steer/Heifer Avg: \$198.95
Dressed Heifer Avg:	\$200.15	<b>TOTAL VOLUME:</b> 99,868
<a href="#">LM CT106</a>	<b>TOTAL WK TO DATE VOLUME:</b>	<b>222,457</b>
<b>Committed:</b>	<b>147,371</b>	<b>Delivered:</b> 69,272

<a href="#">LM CT118</a>	<b>TX-OK-NM</b>	<a href="#">LM CT109</a>
<b>Neg. Cash Volume:</b>	5,063	<b>Dressed Formula Vol:</b> 4,416
Live Steer Avg:	\$125.71	Steer/Heifer Avg: \$197.71
Live Heifer Avg:	\$125.98	<b>Dressed Neg. Grid Vol:</b> 436
Dressed Steer Avg:	N/A	Steer/Heifer Avg: \$195.76
Dressed Heifer Avg:	N/A	<b>TOTAL VOLUME:</b> 9,915
<a href="#">LM CT106</a>	<b>TOTAL WK TO DATE VOLUME:</b>	<b>50,488</b>
<b>Committed:</b>	<b>43,794</b>	<b>Delivered:</b> 16,700

<a href="#">LM CT121</a>	<b>KANSAS</b>	<a href="#">LM CT109</a>
<b>Neg. Cash Volume:</b>	14,306	<b>Dressed Formula Vol:</b> 7,596
Live Steer Avg:	\$125.95	Steer/Heifer Avg: \$201.30
Live Heifer Avg:	\$125.98	<b>Dressed Neg. Grid Vol:</b> 976
Dressed Steer Avg:	\$199.45	Steer/Heifer Avg: \$202.57
Dressed Heifer Avg:	\$201.00	<b>TOTAL VOLUME:</b> 22,878
<a href="#">LM CT106</a>	<b>TOTAL WK TO DATE VOLUME:</b>	<b>64,885</b>
<b>Committed:</b>	<b>27,935</b>	<b>Delivered:</b> 20,216

<a href="#">LM CT124</a>	<b>NEBRASKA</b>	<a href="#">LM CT109</a>
<b>Neg. Cash Volume:</b>	26,372	<b>Dressed Formula Vol:</b> 11,789
Live Steer Avg:	\$126.91	Steer/Heifer Avg: \$202.57
Live Heifer Avg:	\$126.86	<b>Dressed Neg. Grid Vol:</b> 1,617
Dressed Steer Avg:	\$199.89	Steer/Heifer Avg: \$200.06
Dressed Heifer Avg:	\$200.00	<b>TOTAL VOLUME:</b> 39,778
<a href="#">LM CT106</a>	<b>TOTAL WK TO DATE VOLUME:</b>	<b>60,615</b>
<b>Committed:</b>	<b>37,600</b>	<b>Delivered:</b> 15,456

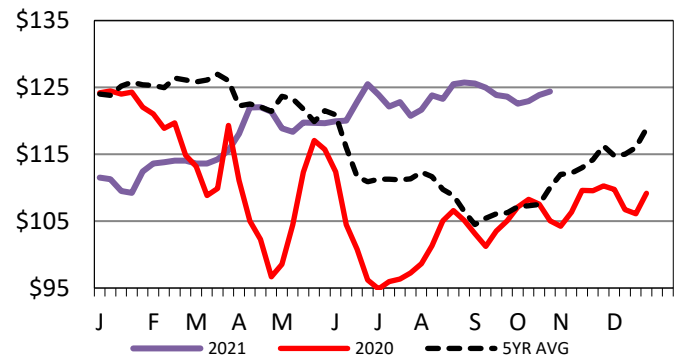
<a href="#">LM CT134</a>	<b>COLORADO</b>	<a href="#">LM CT109</a>
<b>Neg. Cash Volume:</b>	0	<b>Dressed Formula Vol:</b> 3,903
Live Steer Avg:	N/A	Steer/Heifer Avg: \$217.22
Live Heifer Avg:	N/A	<b>Dressed Neg. Grid Vol:</b> 622
Dressed Steer Avg:	N/A	Steer/Heifer Avg: \$203.14
Dressed Heifer Avg:	N/A	<b>TOTAL VOLUME:</b> 4,525
<a href="#">LM CT106</a>	<b>TOTAL WK TO DATE VOLUME:</b>	<b>13,073</b>
<b>Committed:</b>	<b>14,553</b>	<b>Delivered:</b> 6,849

<a href="#">LM CT137</a>	<b>IA-MN</b>	<a href="#">LM CT109</a>
<b>Neg. Cash Volume:</b>	18,771	<b>Dressed Formula Vol:</b> 2,999
Live Steer Avg:	\$126.97	Steer/Heifer Avg: \$196.78
Live Heifer Avg:	\$126.37	<b>Dressed Neg. Grid Vol:</b> 1,152
Dressed Steer Avg:	\$199.94	Steer/Heifer Avg: \$198.05
Dressed Heifer Avg:	\$200.00	<b>TOTAL VOLUME:</b> 22,922
<a href="#">LM CT106</a>	<b>TOTAL WK TO DATE VOLUME:</b>	<b>65,192</b>
<b>Committed:</b>	<b>23,489</b>	<b>Delivered:</b> 10,051

For Wednesday in the Texas Panhandle cash trading was slow with moderate demand. Compared to Tuesday live traded 2.00 higher at 126.00. In Kansas and Nebraska negotiated cash trading and demand were moderate. In Kansas, compared to last week, live traded 2.00 higher at 126.00. In Nebraska, compared to last week, live purchases traded 2.00-3.00 higher at 127.00 and dressed purchases traded 4.00 higher at 200.00. In the Western Cornbelt negotiated cash trading was slow to moderate on moderate demand. Compared to last week live purchases traded 2.00 higher from 126.00-127.00, a few at 128.00, and dressed purchases traded 4.00 higher at 200.00.

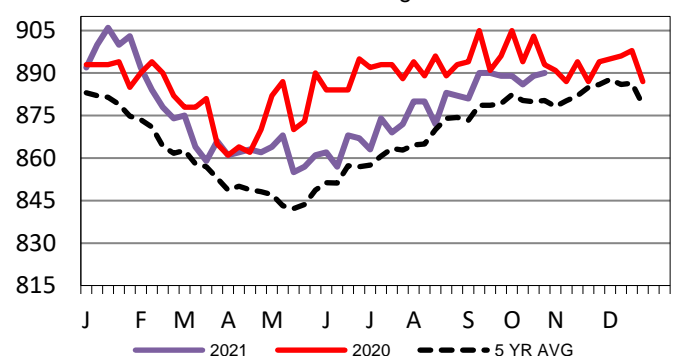
## 5-Area Live Steer Weighted Average

WE 10-24-21 Price = \$124.39



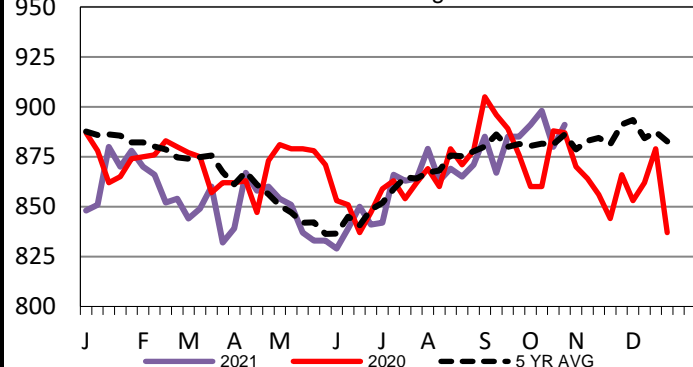
## Kansas Formula Carcass Weights

WE 10-24-21 Weight = 890 lbs



## Colorado Formula Carcass Weights

WE 10-24-21 Weight = 891 lbs



## USDA Livestock, Poultry and Grain Market News

St. Joseph, Missouri

Phone: 816-676-7000

[stjoe.lpgmn@ams.usda.gov](mailto:stjoe.lpgmn@ams.usda.gov)