

Daily Direct Steer and Heifer Slaughter Cattle Summary

For Trade on:

Wednesday, October 20, 2021

LM CT100	5-AREA	LM CT109
Neg. Cash Volume:	38,994	Dressed Formula Vol: 31,524
Live Steer Avg:	\$124.37	Steer/Heifer Avg: \$204.18
Live Heifer Avg:	\$124.36	Dressed Neg. Grid Vol: 1,371
Dressed Steer Avg:	\$195.83	Steer/Heifer Avg: \$197.84
Dressed Heifer Avg:	\$196.00	TOTAL VOLUME: 71,889
LM CT106	TOTAL WK TO DATE VOLUME:	176,813
Committed:	121,099	Delivered: 68,379

LM CT118	TX-OK-NM	LM CT109
Neg. Cash Volume:	6,912	Dressed Formula Vol: 9,776
Live Steer Avg:	\$123.89	Steer/Heifer Avg: \$201.76
Live Heifer Avg:	\$123.71	Dressed Neg. Grid Vol: 0
Dressed Steer Avg:	N/A	Steer/Heifer Avg: N/A
Dressed Heifer Avg:	N/A	TOTAL VOLUME: 16,688
LM CT106	TOTAL WK TO DATE VOLUME:	42,878
Committed:	30,967	Delivered: 20,745

LM CT121	KANSAS	LM CT109
Neg. Cash Volume:	8,178	Dressed Formula Vol: 6,087
Live Steer Avg:	\$124.00	Steer/Heifer Avg: \$199.25
Live Heifer Avg:	\$124.00	Dressed Neg. Grid Vol: 72
Dressed Steer Avg:	N/A	Steer/Heifer Avg: \$192.88
Dressed Heifer Avg:	N/A	TOTAL VOLUME: 14,337
LM CT106	TOTAL WK TO DATE VOLUME:	54,708
Committed:	32,758	Delivered: 18,291

LM CT124	NEBRASKA	LM CT109
Neg. Cash Volume:	8,835	Dressed Formula Vol: 10,748
Live Steer Avg:	\$124.88	Steer/Heifer Avg: \$203.42
Live Heifer Avg:	\$126.50	Dressed Neg. Grid Vol: 376
Dressed Steer Avg:	\$195.86	Steer/Heifer Avg: \$198.19
Dressed Heifer Avg:	\$196.00	TOTAL VOLUME: 19,959
LM CT106	TOTAL WK TO DATE VOLUME:	37,452
Committed:	20,956	Delivered: 14,462

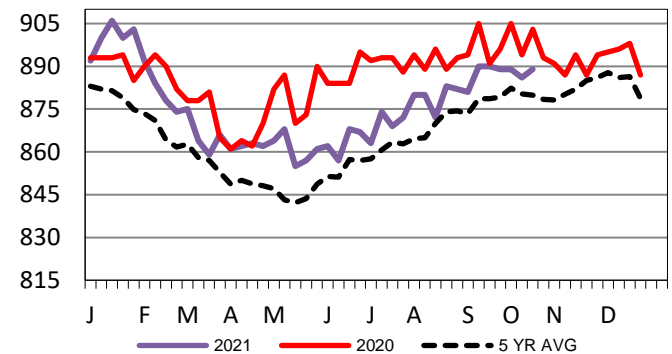
LM CT134	COLORADO	LM CT109
Neg. Cash Volume:	0	Dressed Formula Vol: 2,326
Live Steer Avg:	N/A	Steer/Heifer Avg: \$235.87
Live Heifer Avg:	N/A	Dressed Neg. Grid Vol: 201
Dressed Steer Avg:	N/A	Steer/Heifer Avg: \$194.81
Dressed Heifer Avg:	N/A	TOTAL VOLUME: 2,527
LM CT106	TOTAL WK TO DATE VOLUME:	13,340
Committed:	10,129	Delivered: 5,892

LM CT137	IA-MN	LM CT109
Neg. Cash Volume:	15,069	Dressed Formula Vol: 2,663
Live Steer Avg:	\$124.73	Steer/Heifer Avg: \$199.65
Live Heifer Avg:	\$125.17	Dressed Neg. Grid Vol: 755
Dressed Steer Avg:	\$195.78	Steer/Heifer Avg: \$198.88
Dressed Heifer Avg:	\$196.00	TOTAL VOLUME: 18,487
LM CT106	TOTAL WK TO DATE VOLUME:	28,794
Committed:	26,289	Delivered: 8,989

On Wednesday cash trading was slow on moderate demand in the Southern Plains and Nebraska. In the Southern Plains live traded steady at 124.00, compared to last week. In Nebraska live traded steady to 2.50 higher from 124.00-126.50 and dressed purchases traded steady at 196.00, compared to the prior week. For Wednesday in the Western Cornbelt negotiated cash trading was slow with good demand. Compared to last week live purchases traded from 124.00-127.00, mostly steady to 1.00 higher from 124.00-125.00 and dressed purchases traded steady at 196.00. A light test of purchases was noted in these feeding regions.

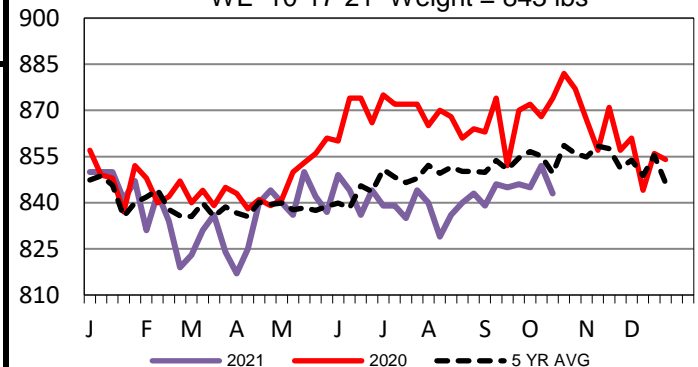
Kansas Formula Carcass Weights

WE 10-17-21 Weight = 889 lbs



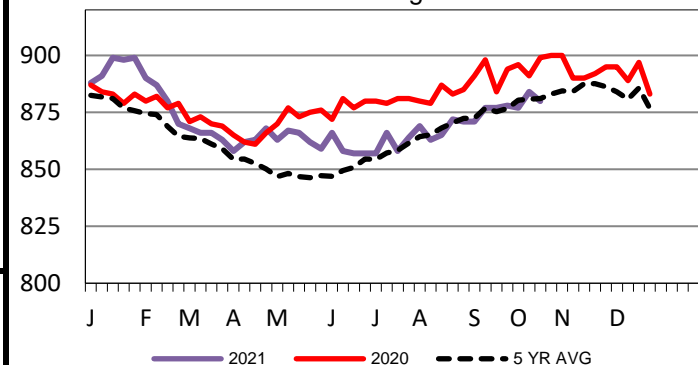
TX-OK-NM Formula Carcass Weights

WE 10-17-21 Weight = 843 lbs



5-Area Formula Carcass Weight

WE 10-17-21 Weight = 880 lbs



USDA Livestock, Poultry and Grain Market News

St. Joseph, Missouri

Phone: 816-676-7000

stjoe.lpgmn@ams.usda.gov