

## Daily Direct Steer and Heifer Slaughter Cattle Summary

For Trade on:

Monday, October 11, 2021

<a href="#">LM CT100</a>	<b>5-AREA</b>	<a href="#">LM CT109</a>
<b>Neg. Cash Volume:</b>	0	<b>Dressed Formula Vol:</b> 51,964
Live Steer Avg:	N/A	Steer/Heifer Avg: \$198.04
Live Heifer Avg:	N/A	<b>Dressed Neg. Grid Vol:</b> 5,944
Dressed Steer Avg:	N/A	Steer/Heifer Avg: \$199.44
Dressed Heifer Avg:	N/A	<b>TOTAL VOLUME:</b> 57,908
<a href="#">LM CT106</a>	<b>TOTAL WK TO DATE VOLUME:</b>	<b>57,908</b>
<b>Committed:</b>	<b>57,637</b>	<b>Delivered:</b> 68,367

<a href="#">LM CT118</a>	<b>TX-OK-NM</b>	<a href="#">LM CT109</a>
<b>Neg. Cash Volume:</b>	0	<b>Dressed Formula Vol:</b> 15,359
Live Steer Avg:	N/A	Steer/Heifer Avg: \$196.20
Live Heifer Avg:	N/A	<b>Dressed Neg. Grid Vol:</b> 369
Dressed Steer Avg:	N/A	Steer/Heifer Avg: \$194.44
Dressed Heifer Avg:	N/A	<b>TOTAL VOLUME:</b> 15,728
<a href="#">LM CT106</a>	<b>TOTAL WK TO DATE VOLUME:</b>	<b>15,764</b>
<b>Committed:</b>	<b>17,993</b>	<b>Delivered:</b> 16,122

<a href="#">LM CT121</a>	<b>KANSAS</b>	<a href="#">LM CT109</a>
<b>Neg. Cash Volume:</b>	\$0.00	<b>Dressed Formula Vol:</b> 24,911
Live Steer Avg:	N/A	Steer/Heifer Avg: \$198.54
Live Heifer Avg:	N/A	<b>Dressed Neg. Grid Vol:</b> 1,998
Dressed Steer Avg:	N/A	Steer/Heifer Avg: \$196.39
Dressed Heifer Avg:	N/A	<b>TOTAL VOLUME:</b> 26,909
<a href="#">LM CT106</a>	<b>TOTAL WK TO DATE VOLUME:</b>	<b>26,909</b>
<b>Committed:</b>	<b>15,203</b>	<b>Delivered:</b> 21,229

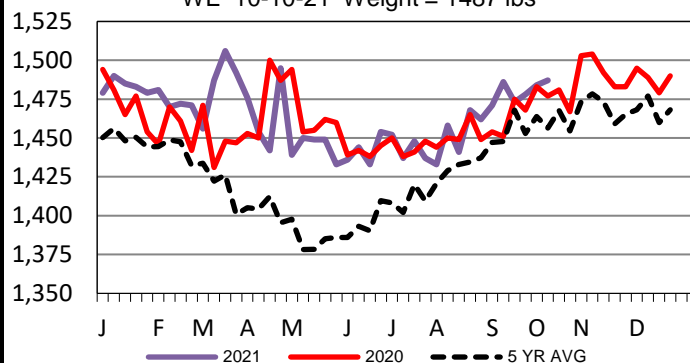
<a href="#">LM CT124</a>	<b>NEBRASKA</b>	<a href="#">LM CT109</a>
<b>Neg. Cash Volume:</b>	0	<b>Dressed Formula Vol:</b> 5,169
Live Steer Avg:	N/A	Steer/Heifer Avg: \$200.21
Live Heifer Avg:	N/A	<b>Dressed Neg. Grid Vol:</b> 2,784
Dressed Steer Avg:	N/A	Steer/Heifer Avg: \$202.14
Dressed Heifer Avg:	N/A	<b>TOTAL VOLUME:</b> 7,953
<a href="#">LM CT106</a>	<b>TOTAL WK TO DATE VOLUME:</b>	<b>7,953</b>
<b>Committed:</b>	<b>11,780</b>	<b>Delivered:</b> 16,090

<a href="#">LM CT134</a>	<b>COLORADO</b>	<a href="#">LM CT109</a>
<b>Neg. Cash Volume:</b>	0	<b>Dressed Formula Vol:</b> 4,672
Live Steer Avg:	N/A	Steer/Heifer Avg: \$198.26
Live Heifer Avg:	N/A	<b>Dressed Neg. Grid Vol:</b> 363
Dressed Steer Avg:	N/A	Steer/Heifer Avg: \$195.35
Dressed Heifer Avg:	N/A	<b>TOTAL VOLUME:</b> 5,035
<a href="#">LM CT106</a>	<b>TOTAL WK TO DATE VOLUME:</b>	<b>5,035</b>
<b>Committed:</b>	<b>2,767</b>	<b>Delivered:</b> 5,230

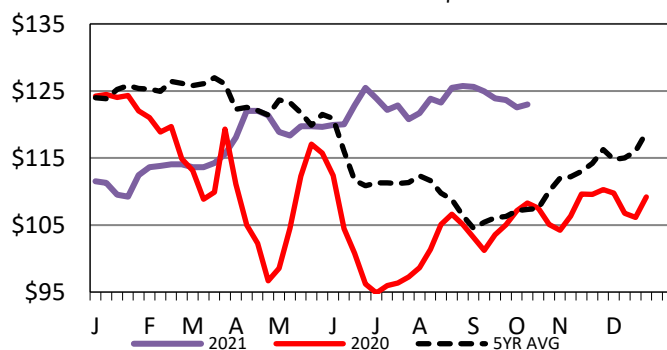
<a href="#">LM CT137</a>	<b>IA-MN</b>	<a href="#">LM CT109</a>
<b>Neg. Cash Volume:</b>	0	<b>Dressed Formula Vol:</b> 2,081
Live Steer Avg:	N/A	Steer/Heifer Avg: \$199.90
Live Heifer Avg:	N/A	<b>Dressed Neg. Grid Vol:</b> 469
Dressed Steer Avg:	N/A	Steer/Heifer Avg: \$203.85
Dressed Heifer Avg:	N/A	<b>TOTAL VOLUME:</b> 2,550
<a href="#">LM CT106</a>	<b>TOTAL WK TO DATE VOLUME:</b>	<b>2,550</b>
<b>Committed:</b>	<b>9,894</b>	<b>Delivered:</b> 9,696

For Monday negotiated cash trading was at a standstill in all major feeding regions. Last week in the Southern Plains live purchases traded at 124.00. For the prior week in Nebraska live and dressed purchases traded from 122.00-124.00 and at 196.00, respectively. For previous week in the Western Cornbelt live and dressed purchases traded at 122.00 and from 193.00-196.00, respectively.

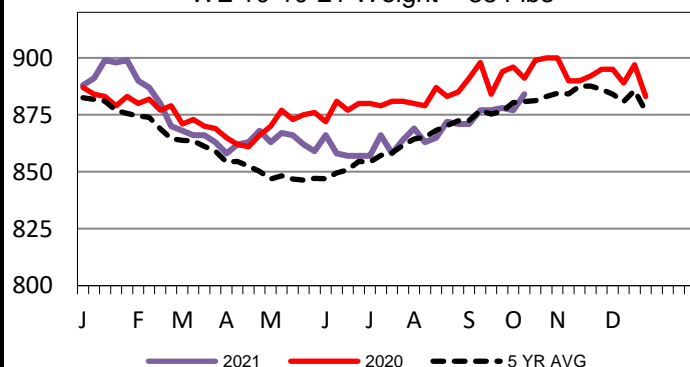
**5-Area Negotiated Cash Live Steer Weights**  
WE 10-10-21 Weight = 1487 lbs



**5-Area Live Steer Weighted Average**  
WE 10-10-21 Price = \$122.96



**5-Area Formula Carcass Weight**  
WE 10-10-21 Weight = 884 lbs



## USDA Livestock, Poultry and Grain Market News

St. Joseph, Missouri

Phone: 816-676-7000

[stjoe.lpgmn@ams.usda.gov](mailto:stjoe.lpgmn@ams.usda.gov)