

Daily Direct Steer and Heifer Slaughter Cattle Summary

For Trade on:

Wednesday, October 06, 2021

LM CT100	5-AREA	LM CT109
Neg. Cash Volume:	50,425	Dressed Formula Vol: 24,482
Live Steer Avg:	\$123.26	Steer/Heifer Avg: \$203.95
Live Heifer Avg:	\$123.65	Dressed Neg. Grid Vol: 3,515
Dressed Steer Avg:	\$195.37	Steer/Heifer Avg: \$202.06
Dressed Heifer Avg:	\$195.76	TOTAL VOLUME: 78,422
LM CT106	TOTAL WK TO DATE VOLUME:	197,844
Committed:	119,993	Delivered: 70,288

LM CT118	TX-OK-NM	LM CT109
Neg. Cash Volume:	6,030	Dressed Formula Vol: 8,315
Live Steer Avg:	\$123.96	Steer/Heifer Avg: \$200.37
Live Heifer Avg:	\$124.03	Dressed Neg. Grid Vol: 0
Dressed Steer Avg:	N/A	Steer/Heifer Avg: N/A
Dressed Heifer Avg:	N/A	TOTAL VOLUME: 14,345
LM CT106	TOTAL WK TO DATE VOLUME:	39,063
Committed:	33,515	Delivered: 18,310

LM CT121	KANSAS	LM CT109
Neg. Cash Volume:	11,877	Dressed Formula Vol: 6,326
Live Steer Avg:	\$123.50	Steer/Heifer Avg: \$198.84
Live Heifer Avg:	\$123.93	Dressed Neg. Grid Vol: 84
Dressed Steer Avg:	\$196.00	Steer/Heifer Avg: \$200.00
Dressed Heifer Avg:	N/A	TOTAL VOLUME: 18,287
LM CT106	TOTAL WK TO DATE VOLUME:	65,796
Committed:	28,303	Delivered: 16,560

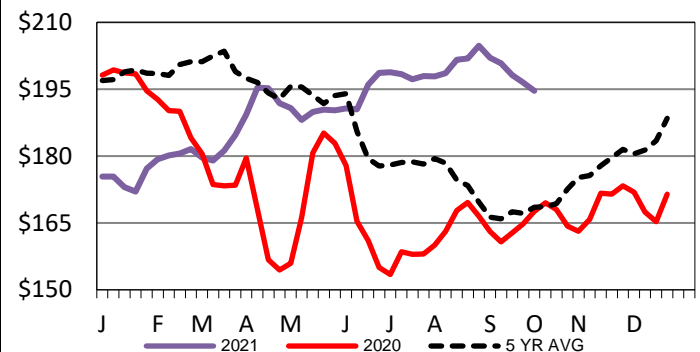
LM CT124	NEBRASKA	LM CT109
Neg. Cash Volume:	23,164	Dressed Formula Vol: 6,664
Live Steer Avg:	\$123.34	Steer/Heifer Avg: \$204.37
Live Heifer Avg:	\$123.34	Dressed Neg. Grid Vol: 1,945
Dressed Steer Avg:	\$195.33	Steer/Heifer Avg: \$203.44
Dressed Heifer Avg:	\$195.80	TOTAL VOLUME: 31,773
LM CT106	TOTAL WK TO DATE VOLUME:	55,314
Committed:	35,551	Delivered: 17,071

LM CT134	COLORADO	LM CT109
Neg. Cash Volume:	0	Dressed Formula Vol: 2,035
Live Steer Avg:	N/A	Steer/Heifer Avg: \$236.53
Live Heifer Avg:	N/A	Dressed Neg. Grid Vol: 877
Dressed Steer Avg:	N/A	Steer/Heifer Avg: \$197.62
Dressed Heifer Avg:	N/A	TOTAL VOLUME: 2,912
LM CT106	TOTAL WK TO DATE VOLUME:	16,612
Committed:	9,502	Delivered: 8,359

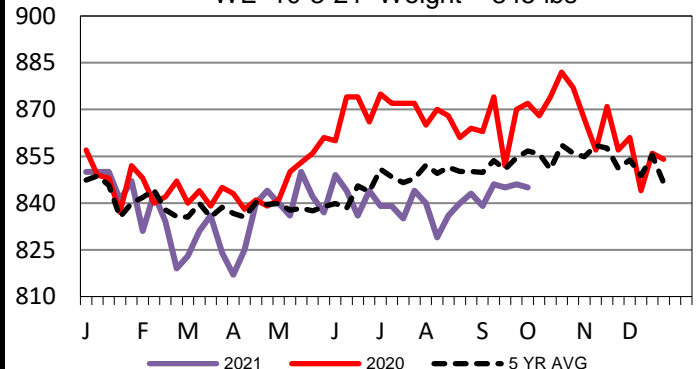
LM CT137	IA-MN	LM CT109
Neg. Cash Volume:	9,354	Dressed Formula Vol: 1,182
Live Steer Avg:	\$122.25	Steer/Heifer Avg: \$197.33
Live Heifer Avg:	\$122.65	Dressed Neg. Grid Vol: 686
Dressed Steer Avg:	\$195.50	Steer/Heifer Avg: \$203.80
Dressed Heifer Avg:	\$195.60	TOTAL VOLUME: 11,222
LM CT106	TOTAL WK TO DATE VOLUME:	21,442
Committed:	13,122	Delivered: 9,988

For Wednesday in all major feeding regions cash trading was slow with moderate demand. In Texas live traded steady at 124.00 when compared to last week. In Kansas live traded steady from 122.00-124.00 when compared to last week. In Nebraska live traded steady to 2.00 higher from 122.00-124.00 and dressed traded from 193.00-196.00, mostly steady at 196.00 when compared to last week. In the Western Cornbelt live traded steady at 122.00 and dressed, on a light test, traded unevenly steady at 196.00 when compared to last week. A light test was noted in all regions.

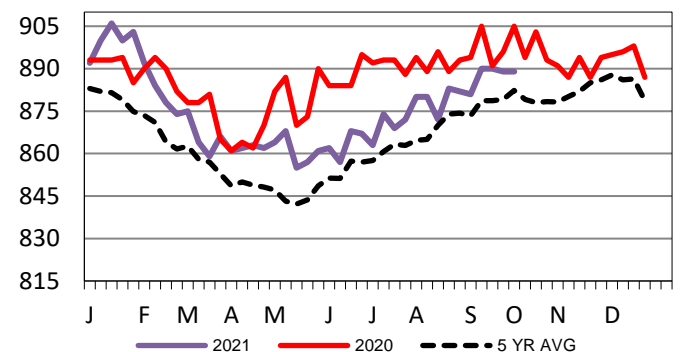
Iowa-Minnesota Wkly Dress Steer Wtd Avg
WE 10-3-21 Price = \$194.66



TX-OK-NM Formula Carcass Weights
WE 10-3-21 Weight = 845 lbs



Kansas Formula Carcass Weights
WE 10-3-21 Weight = 889 lbs



USDA Livestock, Poultry and Grain Market News

St. Joseph, Missouri

Phone: 816-676-7000

stjoe.lpgmn@ams.usda.gov