

Daily Direct Steer and Heifer Slaughter Cattle Summary

For Trade on:

Friday, October 01, 2021

LM CT100	5-AREA	LM CT109
Neg. Cash Volume:	8,683	Dressed Formula Vol: 41,911
Live Steer Avg:	\$121.95	Steer/Heifer Avg: \$199.74
Live Heifer Avg:	\$121.65	Dressed Neg. Grid Vol: 1,626
Dressed Steer Avg:	\$195.60	Steer/Heifer Avg: \$201.45
Dressed Heifer Avg:	\$193.36	TOTAL VOLUME: 52,220
LM CT106	TOTAL WK TO DATE VOLUME:	283,253
Committed:	83,191	Delivered: 98,143

LM CT118	TX-OK-NM	LM CT109
Neg. Cash Volume:	0	Dressed Formula Vol: 13,595
Live Steer Avg:	N/A	Steer/Heifer Avg: \$196.45
Live Heifer Avg:	N/A	Dressed Neg. Grid Vol: 127
Dressed Steer Avg:	N/A	Steer/Heifer Avg: \$198.77
Dressed Heifer Avg:	N/A	TOTAL VOLUME: 13,722
LM CT106	TOTAL WK TO DATE VOLUME:	71,717
Committed:	21,426	Delivered: 18,672

LM CT121	KANSAS	LM CT109
Neg. Cash Volume:	0	Dressed Formula Vol: 16,318
Live Steer Avg:	N/A	Steer/Heifer Avg: \$199.66
Live Heifer Avg:	N/A	Dressed Neg. Grid Vol: 0
Dressed Steer Avg:	N/A	Steer/Heifer Avg: N/A
Dressed Heifer Avg:	N/A	TOTAL VOLUME: 16,318
LM CT106	TOTAL WK TO DATE VOLUME:	79,568
Committed:	21,709	Delivered: 25,142

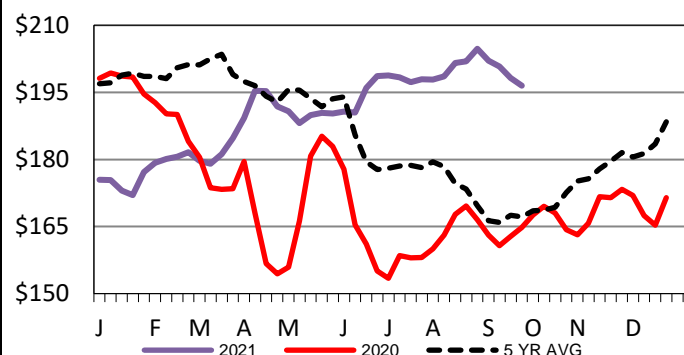
LM CT124	NEBRASKA	LM CT109
Neg. Cash Volume:	4,459	Dressed Formula Vol: 4,271
Live Steer Avg:	\$121.68	Steer/Heifer Avg: \$205.66
Live Heifer Avg:	\$121.59	Dressed Neg. Grid Vol: 629
Dressed Steer Avg:	\$195.60	Steer/Heifer Avg: \$207.11
Dressed Heifer Avg:	\$196.00	TOTAL VOLUME: 9,359
LM CT106	TOTAL WK TO DATE VOLUME:	61,459
Committed:	20,617	Delivered: 27,932

LM CT134	COLORADO	LM CT109
Neg. Cash Volume:	0	Dressed Formula Vol: 5,011
Live Steer Avg:	N/A	Steer/Heifer Avg: \$203.79
Live Heifer Avg:	N/A	Dressed Neg. Grid Vol: 0
Dressed Steer Avg:	N/A	Steer/Heifer Avg: N/A
Dressed Heifer Avg:	N/A	TOTAL VOLUME: 5,011
LM CT106	TOTAL WK TO DATE VOLUME:	22,882
Committed:	8,822	Delivered: 10,976

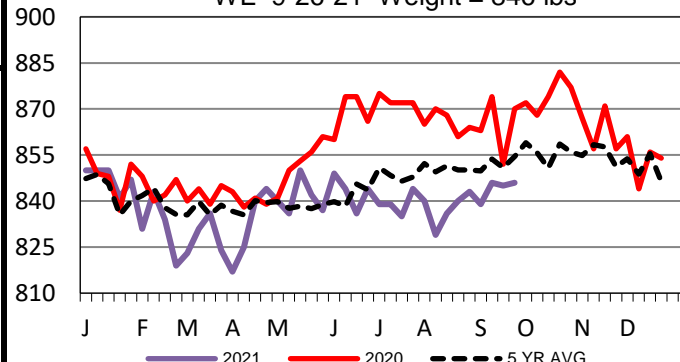
LM CT137	IA-MN	LM CT109
Neg. Cash Volume:	2,442	Dressed Formula Vol: 3,064
Live Steer Avg:	\$122.11	Steer/Heifer Avg: \$200.14
Live Heifer Avg:	\$121.92	Dressed Neg. Grid Vol: 870
Dressed Steer Avg:	N/A	Steer/Heifer Avg: \$197.75
Dressed Heifer Avg:	\$192.73	TOTAL VOLUME: 6,376
LM CT106	TOTAL WK TO DATE VOLUME:	46,722
Committed:	10,617	Delivered: 15,421

For Friday negotiated cash trading was limited on light demand in Nebraska and the Western Cornbelt with a few live purchases at 122.00, however not enough in either region for a full market trend. Negotiated cash trading was at a standstill in the Southern Plains. The last reportable market in any region was on Wednesday. In the Texas Panhandle, live traded at 124.00. In Kansas, live purchases traded from 121.00-124.00. In Nebraska, live and dressed purchases traded at 122.00 and 196.00, respectively. In the Western Cornbelt, live and dressed purchases traded from 122.00-123.00 and from 192.00-196.00, respectively.

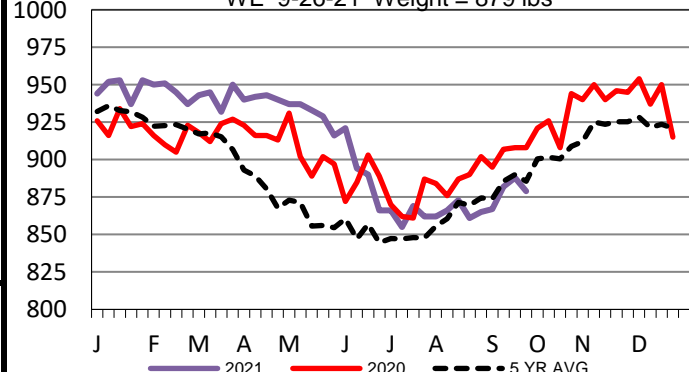
Iowa-Minnesota Wkly Dress Steer Wtd Avg
WE 9-26-21 Price = \$196.50



TX-OK-NM Formula Carcass Weights
WE 9-26-21 Weight = 846 lbs



Iowa-Minnesota Formula Carcass Weights
WE 9-26-21 Weight = 879 lbs



USDA Livestock, Poultry and Grain Market News

St. Joseph, Missouri

Phone: 816-676-7000

stjoe.lpgmn@ams.usda.gov