

## Daily Direct Steer and Heifer Slaughter Cattle Summary

For Trade on:

Friday, September 24, 2021

<a href="#">LM CT100</a>	<b>5-AREA</b>	<a href="#">LM CT109</a>
<b>Neg. Cash Volume:</b>	984	<b>Dressed Formula Vol:</b> 40,490
Live Steer Avg:	N/A	Steer/Heifer Avg: \$200.43
Live Heifer Avg:	\$122.00	<b>Dressed Neg. Grid Vol:</b> 2,549
Dressed Steer Avg:	\$193.45	Steer/Heifer Avg: \$203.06
Dressed Heifer Avg:	\$193.00	<b>TOTAL VOLUME:</b> 44,023
<a href="#">LM CT106</a>	<b>TOTAL WK TO DATE VOLUME:</b>	<b>269,912</b>
<b>Committed:</b>	<b>46,539</b>	<b>Delivered:</b> 100,209

<a href="#">LM CT118</a>	<b>TX-OK-NM</b>	<a href="#">LM CT109</a>
<b>Neg. Cash Volume:</b>	0	<b>Dressed Formula Vol:</b> 12,564
Live Steer Avg:	N/A	Steer/Heifer Avg: \$197.73
Live Heifer Avg:	N/A	<b>Dressed Neg. Grid Vol:</b> 0
Dressed Steer Avg:	N/A	Steer/Heifer Avg: N/A
Dressed Heifer Avg:	N/A	<b>TOTAL VOLUME:</b> 12,564
<a href="#">LM CT106</a>	<b>TOTAL WK TO DATE VOLUME:</b>	<b>68,702</b>
<b>Committed:</b>	<b>2,970</b>	<b>Delivered:</b> 27,695

<a href="#">LM CT121</a>	<b>KANSAS</b>	<a href="#">LM CT109</a>
<b>Neg. Cash Volume:</b>	69	<b>Dressed Formula Vol:</b> 15,404
Live Steer Avg:	N/A	Steer/Heifer Avg: \$199.17
Live Heifer Avg:	\$122.00	<b>Dressed Neg. Grid Vol:</b> 175
Dressed Steer Avg:	N/A	Steer/Heifer Avg: \$200.31
Dressed Heifer Avg:	N/A	<b>TOTAL VOLUME:</b> 15,648
<a href="#">LM CT106</a>	<b>TOTAL WK TO DATE VOLUME:</b>	<b>78,946</b>
<b>Committed:</b>	<b>13,590</b>	<b>Delivered:</b> 27,410

<a href="#">LM CT124</a>	<b>NEBRASKA</b>	<a href="#">LM CT109</a>
<b>Neg. Cash Volume:</b>	376	<b>Dressed Formula Vol:</b> 4,780
Live Steer Avg:	N/A	Steer/Heifer Avg: \$208.82
Live Heifer Avg:	N/A	<b>Dressed Neg. Grid Vol:</b> 1,707
Dressed Steer Avg:	\$193.00	Steer/Heifer Avg: \$202.69
Dressed Heifer Avg:	N/A	<b>TOTAL VOLUME:</b> 6,863
<a href="#">LM CT106</a>	<b>TOTAL WK TO DATE VOLUME:</b>	<b>73,502</b>
<b>Committed:</b>	<b>14,226</b>	<b>Delivered:</b> 22,766

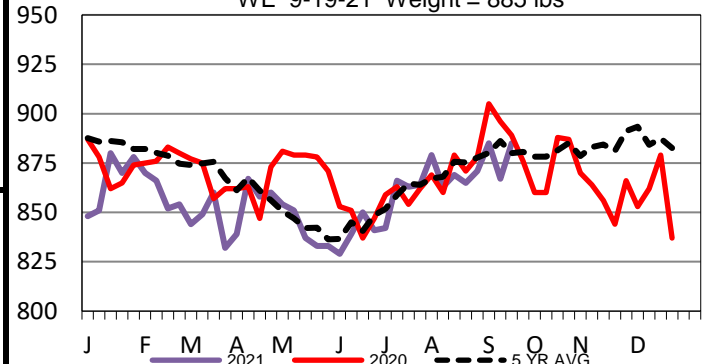
<a href="#">LM CT134</a>	<b>COLORADO</b>	<a href="#">LM CT109</a>
<b>Neg. Cash Volume:</b>	0	<b>Dressed Formula Vol:</b> 5,458
Live Steer Avg:	N/A	Steer/Heifer Avg: \$201.84
Live Heifer Avg:	N/A	<b>Dressed Neg. Grid Vol:</b> 160
Dressed Steer Avg:	N/A	Steer/Heifer Avg: \$203.15
Dressed Heifer Avg:	N/A	<b>TOTAL VOLUME:</b> 5,618
<a href="#">LM CT106</a>	<b>TOTAL WK TO DATE VOLUME:</b>	<b>22,360</b>
<b>Committed:</b>	<b>7,934</b>	<b>Delivered:</b> 6,951

<a href="#">LM CT137</a>	<b>IA-MN</b>	<a href="#">LM CT109</a>
<b>Neg. Cash Volume:</b>	539	<b>Dressed Formula Vol:</b> 2,500
Live Steer Avg:	N/A	Steer/Heifer Avg: \$202.98
Live Heifer Avg:	N/A	<b>Dressed Neg. Grid Vol:</b> 507
Dressed Steer Avg:	\$197.00	Steer/Heifer Avg: \$205.22
Dressed Heifer Avg:	\$193.00	<b>TOTAL VOLUME:</b> 3,546
<a href="#">LM CT106</a>	<b>TOTAL WK TO DATE VOLUME:</b>	<b>27,098</b>
<b>Committed:</b>	<b>7,819</b>	<b>Delivered:</b> 15,387

For Friday cash trading was mostly inactive on light demand in Kansas, Nebraska and Western Cornbelt. Not enough purchases for a market trend in these regions. In the Texas Panhandle cash trading was at a standstill. Wednesday was the last fully report market in all regions. In the Texas Panhandle live purchases traded at 124.00. In Kansas live traded from 123.00-124.00. In Nebraska live and dressed traded at 124.00 and 198.00, respectively. In the Western Cornbelt live and dressed traded from 123.00-124.00 and from 194.00-198.00, respectively.

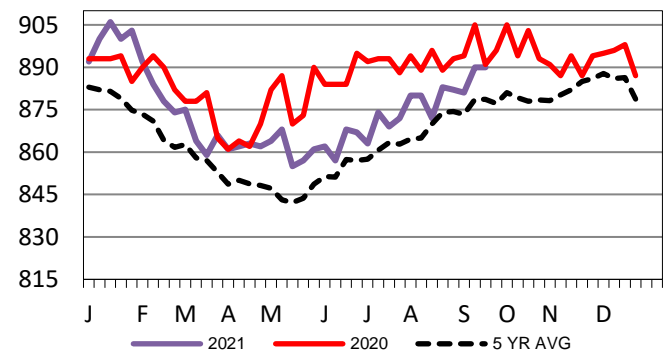
## Colorado Formula Carcass Weights

WE 9-19-21 Weight = 885 lbs



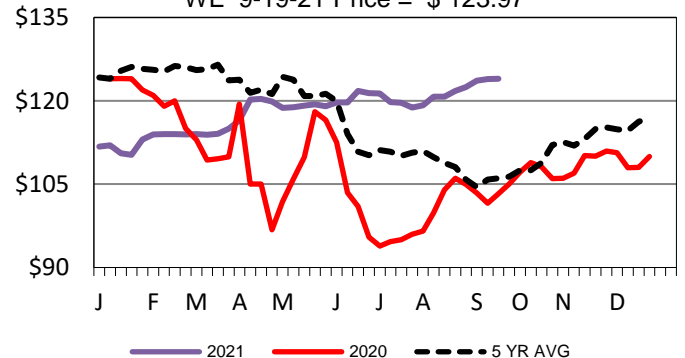
## Kansas Formula Carcass Weights

WE 9-19-21 Weight = 890 lbs



## TX-OK-NM Wkly Live Steer Wtd Avg

WE 9-19-21 Price = \$ 123.97



## USDA Livestock, Poultry and Grain Market News

St. Joseph, Missouri

Phone: 816-676-7000

[stjoe.lpgmn@ams.usda.gov](mailto:stjoe.lpgmn@ams.usda.gov)