

Daily Direct Steer and Heifer Slaughter Cattle Summary

For Trade on:

Thursday, September 23, 2021

LM CT100	5-AREA	LM CT109
Neg. Cash Volume:	9,545	Dressed Formula Vol: 32,059
Live Steer Avg:	\$122.78	Steer/Heifer Avg: \$202.24
Live Heifer Avg:	\$123.55	Dressed Neg. Grid Vol: 2,709
Dressed Steer Avg:	\$196.12	Steer/Heifer Avg: \$202.34
Dressed Heifer Avg:	\$195.22	TOTAL VOLUME: 44,313
LM CT106	TOTAL WK TO DATE VOLUME:	225,889
Committed:	64,592	Delivered: 60,018

LM CT118	TX-OK-NM	LM CT109
Neg. Cash Volume:	675	Dressed Formula Vol: 12,987
Live Steer Avg:	\$124.00	Steer/Heifer Avg: \$196.52
Live Heifer Avg:	\$124.00	Dressed Neg. Grid Vol: 0
Dressed Steer Avg:	N/A	Steer/Heifer Avg: N/A
Dressed Heifer Avg:	N/A	TOTAL VOLUME: 13,662
LM CT106	TOTAL WK TO DATE VOLUME:	56,138
Committed:	18,295	Delivered: 13,328

LM CT121	KANSAS	LM CT109
Neg. Cash Volume:	0	Dressed Formula Vol: 8,867
Live Steer Avg:	N/A	Steer/Heifer Avg: \$200.31
Live Heifer Avg:	N/A	Dressed Neg. Grid Vol: 0
Dressed Steer Avg:	N/A	Steer/Heifer Avg: N/A
Dressed Heifer Avg:	N/A	TOTAL VOLUME: 8,867
LM CT106	TOTAL WK TO DATE VOLUME:	63,298
Committed:	17,503	Delivered: 17,662

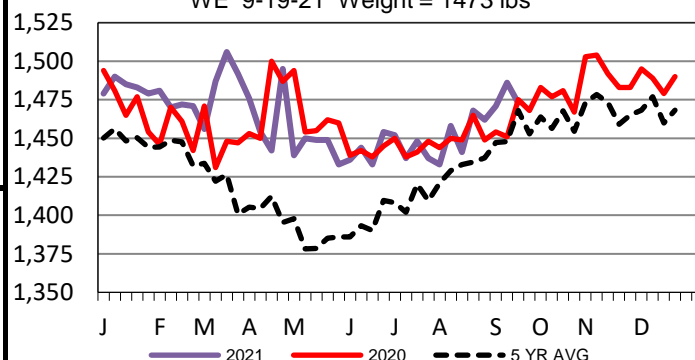
LM CT124	NEBRASKA	LM CT109
Neg. Cash Volume:	4,398	Dressed Formula Vol: 4,827
Live Steer Avg:	\$123.30	Steer/Heifer Avg: \$209.34
Live Heifer Avg:	\$124.00	Dressed Neg. Grid Vol: 1,983
Dressed Steer Avg:	\$196.41	Steer/Heifer Avg: \$201.89
Dressed Heifer Avg:	\$198.00	TOTAL VOLUME: 11,208
LM CT106	TOTAL WK TO DATE VOLUME:	66,639
Committed:	16,992	Delivered: 15,763

LM CT134	COLORADO	LM CT109
Neg. Cash Volume:	0	Dressed Formula Vol: 3,226
Live Steer Avg:	N/A	Steer/Heifer Avg: \$220.73
Live Heifer Avg:	N/A	Dressed Neg. Grid Vol: 275
Dressed Steer Avg:	N/A	Steer/Heifer Avg: \$202.92
Dressed Heifer Avg:	N/A	TOTAL VOLUME: 3,501
LM CT106	TOTAL WK TO DATE VOLUME:	16,742
Committed:	2,819	Delivered: 5,261

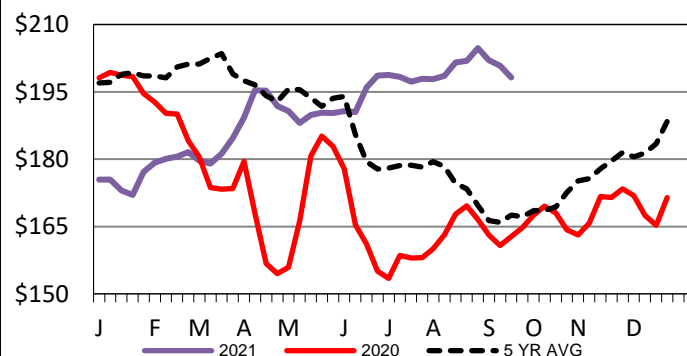
LM CT137	IA-MN	LM CT109
Neg. Cash Volume:	4,472	Dressed Formula Vol: 2,484
Live Steer Avg:	\$122.48	Steer/Heifer Avg: \$202.47
Live Heifer Avg:	\$122.22	Dressed Neg. Grid Vol: 451
Dressed Steer Avg:	\$195.76	Steer/Heifer Avg: \$203.97
Dressed Heifer Avg:	\$194.26	TOTAL VOLUME: 7,407
LM CT106	TOTAL WK TO DATE VOLUME:	23,552
Committed:	8,983	Delivered: 8,004

For Thursday cash trading was mostly inactive with light demand in the Texas Panhandle. In Nebraska and Western Cornbelt cash trading was limited on moderate demand. In Kansas cash trading was at a standstill. Wednesday was the last fully report market in all regions. In the Texas Panhandle live traded at 124.00. In Kansas live traded from 123.00-124.00. In Nebraska live and dressed traded at 124.00 and 198.00, respectively. In the Western Cornbelt live and dressed traded from 123.00-124.00 and from 194.00-198.00, respectively.

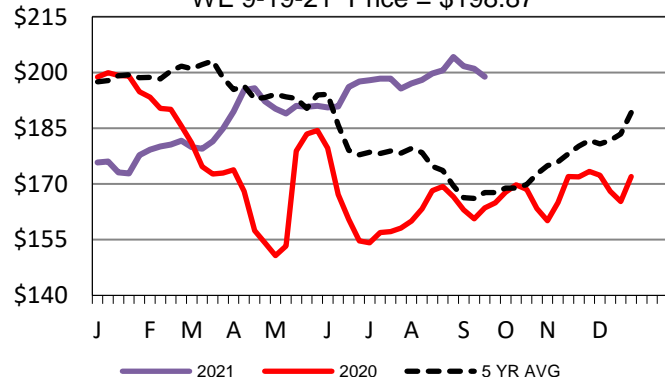
5-Area Negotiated Cash Live Steer Weights
WE 9-19-21 Weight = 1473 lbs



Iowa-Minnesota Wkly Dress Steer Wtd Avg
WE 9-19-21 Price = \$198.18



Nebraska Weekly Dressed Steer Weighted Avg
WE 9-19-21 Price = \$198.87



USDA Livestock, Poultry and Grain Market News

St. Joseph, Missouri

Phone: 816-676-7000

stjoe.lpgmn@ams.usda.gov