

Daily Direct Steer and Heifer Slaughter Cattle Summary

For Trade on:

Wednesday, September 22, 2021

LM CT100	5-AREA	LM CT109
Neg. Cash Volume:	31,320	Dressed Formula Vol: 34,257
Live Steer Avg:	\$123.74	Steer/Heifer Avg: \$204.33
Live Heifer Avg:	\$123.63	Dressed Neg. Grid Vol: 3,410
Dressed Steer Avg:	\$196.72	Steer/Heifer Avg: \$207.98
Dressed Heifer Avg:	\$197.11	TOTAL VOLUME: 68,987
LM CT106	TOTAL WK TO DATE VOLUME:	181,576
Committed:	96,477	Delivered: 70,588

LM CT118	TX-OK-NM	LM CT109
Neg. Cash Volume:	2,110	Dressed Formula Vol: 10,826
Live Steer Avg:	\$124.00	Steer/Heifer Avg: \$199.82
Live Heifer Avg:	\$124.03	Dressed Neg. Grid Vol: 0
Dressed Steer Avg:	N/A	Steer/Heifer Avg: N/A
Dressed Heifer Avg:	N/A	TOTAL VOLUME: 12,936
LM CT106	TOTAL WK TO DATE VOLUME:	42,476
Committed:	30,600	Delivered: 17,171

LM CT121	KANSAS	LM CT109
Neg. Cash Volume:	6,808	Dressed Formula Vol: 7,281
Live Steer Avg:	\$123.52	Steer/Heifer Avg: \$200.01
Live Heifer Avg:	\$123.41	Dressed Neg. Grid Vol: 0
Dressed Steer Avg:	N/A	Steer/Heifer Avg: N/A
Dressed Heifer Avg:	N/A	TOTAL VOLUME: 14,089
LM CT106	TOTAL WK TO DATE VOLUME:	54,431
Committed:	20,943	Delivered: 17,666

LM CT124	NEBRASKA	LM CT109
Neg. Cash Volume:	15,377	Dressed Formula Vol: 13,030
Live Steer Avg:	\$124.02	Steer/Heifer Avg: \$207.07
Live Heifer Avg:	\$124.00	Dressed Neg. Grid Vol: 1,570
Dressed Steer Avg:	\$196.75	Steer/Heifer Avg: \$208.51
Dressed Heifer Avg:	\$198.00	TOTAL VOLUME: 29,977
LM CT106	TOTAL WK TO DATE VOLUME:	55,431
Committed:	25,227	Delivered: 18,681

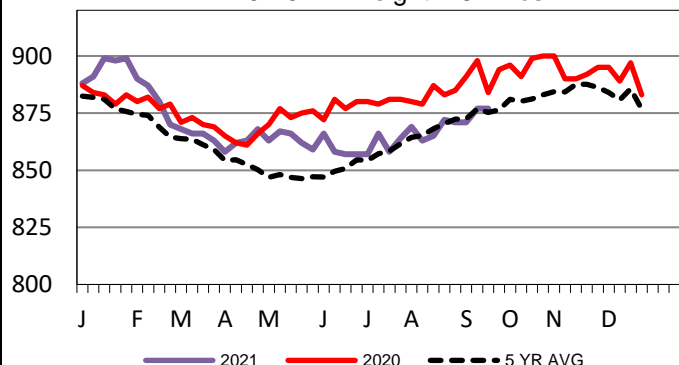
LM CT134	COLORADO	LM CT109
Neg. Cash Volume:	0	Dressed Formula Vol: 1,756
Live Steer Avg:	N/A	Steer/Heifer Avg: \$232.30
Live Heifer Avg:	N/A	Dressed Neg. Grid Vol: 0
Dressed Steer Avg:	N/A	Steer/Heifer Avg: N/A
Dressed Heifer Avg:	N/A	TOTAL VOLUME: 1,756
LM CT106	TOTAL WK TO DATE VOLUME:	13,241
Committed:	12,696	Delivered: 6,618

LM CT137	IA-MN	LM CT109
Neg. Cash Volume:	7,025	Dressed Formula Vol: 1,364
Live Steer Avg:	\$123.22	Steer/Heifer Avg: \$201.06
Live Heifer Avg:	\$122.00	Dressed Neg. Grid Vol: 1,840
Dressed Steer Avg:	\$196.68	Steer/Heifer Avg: \$207.52
Dressed Heifer Avg:	\$194.61	TOTAL VOLUME: 10,229
LM CT106	TOTAL WK TO DATE VOLUME:	16,145
Committed:	7,011	Delivered: 10,452

For Wednesday in Kansas, Nebraska and Western Cornbelt cash trading was slow with moderate demand. In Kansas live traded steady from 123.00-124.00 when compared to last week. In Nebraska live traded 1.00 lower at 124.00 and dressed traded 2.00 lower at 198.00 when compared to the prior week. In the Western Cornbelt live traded steady from 123.00-124.00 and dressed traded 2.00 lower from 194.00-198.00 when compared to the previous week. For Wednesday in the Texas Panhandle cash trading was slow on light demand. Live traded steady at 124.00 when compared to last week. A light test was noted in all regions.

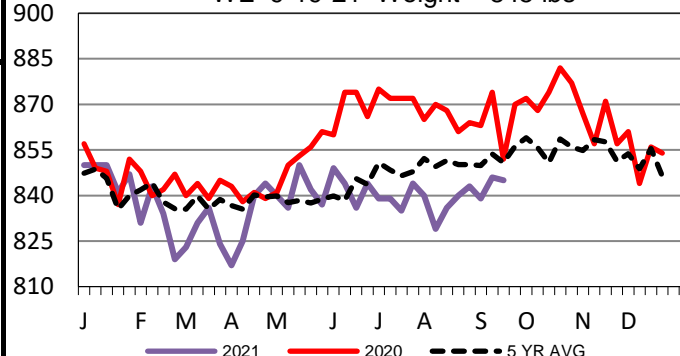
5-Area Formula Carcass Weight

WE 9-19-21 Weight = 877 lbs



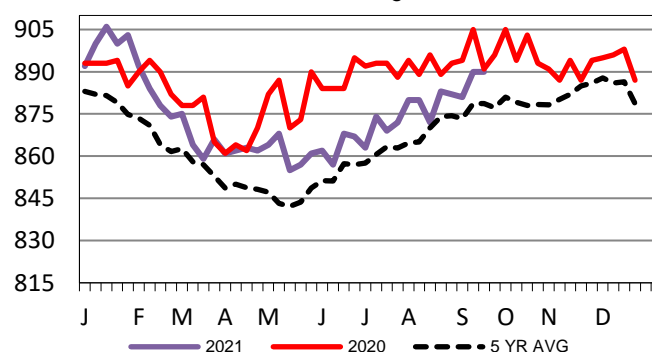
TX-OK-NM Formula Carcass Weights

WE 9-19-21 Weight = 845 lbs



Kansas Formula Carcass Weights

WE 9-19-21 Weight = 890 lbs



USDA Livestock, Poultry and Grain Market News

St. Joseph, Missouri

Phone: 816-676-7000

stjoe.lpgmn@ams.usda.gov