

Daily Direct Steer and Heifer Slaughter Cattle Summary

For Trade on:

Tuesday, September 21, 2021

LM CT100	5-AREA	LM CT109
Neg. Cash Volume:	12,210	Dressed Formula Vol: 33,674
Live Steer Avg:	\$123.85	Steer/Heifer Avg: \$204.85
Live Heifer Avg:	\$124.00	Dressed Neg. Grid Vol: 1,192
Dressed Steer Avg:	\$196.39	Steer/Heifer Avg: \$205.17
Dressed Heifer Avg:	\$198.00	TOTAL VOLUME: 47,076
LM CT106	TOTAL WK TO DATE VOLUME:	112,589
Committed:	80,469	Delivered: 69,981

LM CT118	TX-OK-NM	LM CT109
Neg. Cash Volume:	1,360	Dressed Formula Vol: 11,435
Live Steer Avg:	\$123.70	Steer/Heifer Avg: \$201.89
Live Heifer Avg:	\$124.00	Dressed Neg. Grid Vol: 0
Dressed Steer Avg:	N/A	Steer/Heifer Avg: N/A
Dressed Heifer Avg:	N/A	TOTAL VOLUME: 12,795
LM CT106	TOTAL WK TO DATE VOLUME:	29,540
Committed:	12,877	Delivered: 19,052

LM CT121	KANSAS	LM CT109
Neg. Cash Volume:	2,181	Dressed Formula Vol: 10,531
Live Steer Avg:	\$124.00	Steer/Heifer Avg: \$200.13
Live Heifer Avg:	\$124.00	Dressed Neg. Grid Vol: 184
Dressed Steer Avg:	N/A	Steer/Heifer Avg: \$199.20
Dressed Heifer Avg:	\$198.00	TOTAL VOLUME: 12,896
LM CT106	TOTAL WK TO DATE VOLUME:	40,342
Committed:	34,054	Delivered: 19,505

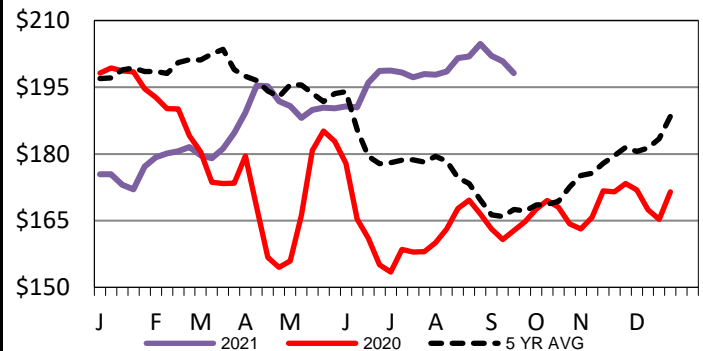
LM CT124	NEBRASKA	LM CT109
Neg. Cash Volume:	6,851	Dressed Formula Vol: 5,743
Live Steer Avg:	\$124.00	Steer/Heifer Avg: \$217.43
Live Heifer Avg:	\$124.00	Dressed Neg. Grid Vol: 710
Dressed Steer Avg:	\$195.99	Steer/Heifer Avg: \$206.18
Dressed Heifer Avg:	N/A	TOTAL VOLUME: 13,304
LM CT106	TOTAL WK TO DATE VOLUME:	25,454
Committed:	20,512	Delivered: 14,411

LM CT134	COLORADO	LM CT109
Neg. Cash Volume:	0	Dressed Formula Vol: 4,499
Live Steer Avg:	N/A	Steer/Heifer Avg: \$206.81
Live Heifer Avg:	N/A	Dressed Neg. Grid Vol: 164
Dressed Steer Avg:	N/A	Steer/Heifer Avg: \$205.09
Dressed Heifer Avg:	N/A	TOTAL VOLUME: 4,663
LM CT106	TOTAL WK TO DATE VOLUME:	11,485
Committed:	7,311	Delivered: 8,483

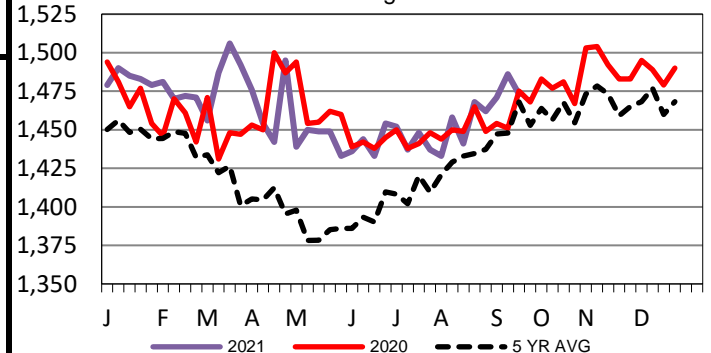
LM CT137	IA-MN	LM CT109
Neg. Cash Volume:	1,818	Dressed Formula Vol: 1,487
Live Steer Avg:	\$123.00	Steer/Heifer Avg: \$206.53
Live Heifer Avg:	N/A	Dressed Neg. Grid Vol: 134
Dressed Steer Avg:	\$197.60	Steer/Heifer Avg: \$208.15
Dressed Heifer Avg:	N/A	TOTAL VOLUME: 3,439
LM CT106	TOTAL WK TO DATE VOLUME:	5,916
Committed:	5,715	Delivered: 8,530

For Tuesday cash trading in the Southern Plains, Nebraska and Western Cornbelt was slow on light demand. In the Southern Plains and Nebraska, a few, live traded at 124.00. A few dressed in Nebraska traded from 194.00-198.00. In the Western Cornbelt, a few, dressed traded at 198.00. Not enough purchases for a full market trend in any region. Last week in the Texas Panhandle live traded at 124.00. In Kansas live traded from 123.00-124.00. In Nebraska live and dressed traded at 124.00 and mostly 200.00, respectively. In the Western Cornbelt live and dressed traded from 123.00- 124.00 and from 196.00-200.00, respectively.

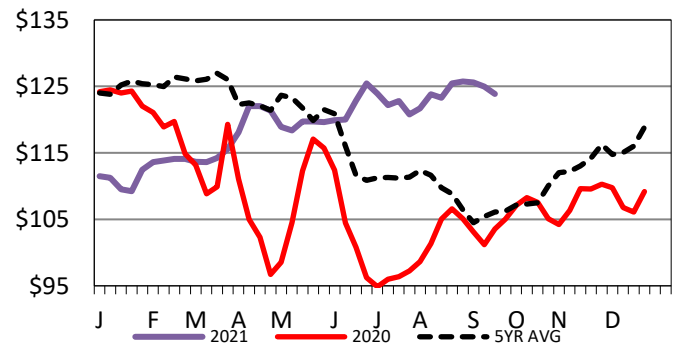
Iowa-Minnesota Wkly Dress Steer Wtd Avg
WE 9-19-21 Price = \$198.18



5-Area Negotiated Cash Live Steer Weights
WE 9-19-21 Weight = 1473 lbs



5-Area Live Steer Weighted Average
WE 9-19-21 Price = \$123.88



USDA Livestock, Poultry and Grain Market News

St. Joseph, Missouri

Phone: 816-676-7000

stjoe.lpgmn@ams.usda.gov