

Daily Direct Steer and Heifer Slaughter Cattle Summary

For Trade on:

Tuesday, September 14, 2021

LM CT100	5-AREA	LM CT109
Neg. Cash Volume:	2,901	Dressed Formula Vol: 33,163
Live Steer Avg:	\$123.91	Steer/Heifer Avg: \$202.50
Live Heifer Avg:	\$124.00	Dressed Neg. Grid Vol: 3,387
Dressed Steer Avg:	\$196.99	Steer/Heifer Avg: \$207.26
Dressed Heifer Avg:	\$196.00	TOTAL VOLUME: 39,451
LM CT106	TOTAL WK TO DATE VOLUME:	118,979
Committed:	55,940	Delivered: 69,915

LM CT118	TX-OK-NM	LM CT109
Neg. Cash Volume:	295	Dressed Formula Vol: 9,844
Live Steer Avg:	N/A	Steer/Heifer Avg: \$201.65
Live Heifer Avg:	\$124.00	Dressed Neg. Grid Vol: 0
Dressed Steer Avg:	N/A	Steer/Heifer Avg: N/A
Dressed Heifer Avg:	N/A	TOTAL VOLUME: 10,139
LM CT106	TOTAL WK TO DATE VOLUME:	35,388
Committed:	7,450	Delivered: 19,192

LM CT121	KANSAS	LM CT109
Neg. Cash Volume:	0	Dressed Formula Vol: 11,742
Live Steer Avg:	N/A	Steer/Heifer Avg: \$199.89
Live Heifer Avg:	N/A	Dressed Neg. Grid Vol: 0
Dressed Steer Avg:	N/A	Steer/Heifer Avg: N/A
Dressed Heifer Avg:	N/A	TOTAL VOLUME: 11,742
LM CT106	TOTAL WK TO DATE VOLUME:	43,321
Committed:	22,291	Delivered: 20,878

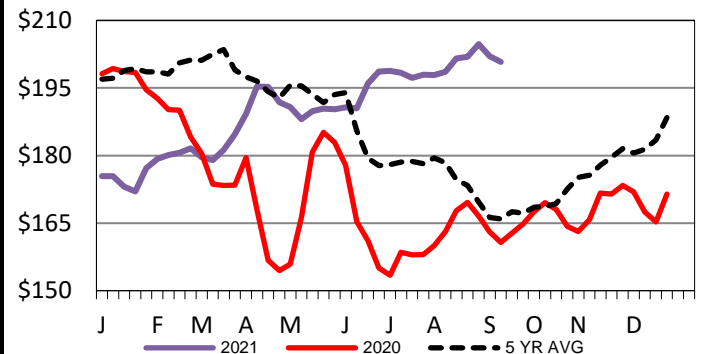
LM CT124	NEBRASKA	LM CT109
Neg. Cash Volume:	80	Dressed Formula Vol: 4,893
Live Steer Avg:	N/A	Steer/Heifer Avg: \$210.26
Live Heifer Avg:	N/A	Dressed Neg. Grid Vol: 1,831
Dressed Steer Avg:	N/A	Steer/Heifer Avg: \$207.70
Dressed Heifer Avg:	N/A	TOTAL VOLUME: 6,804
LM CT106	TOTAL WK TO DATE VOLUME:	17,071
Committed:	15,501	Delivered: 15,086

LM CT134	COLORADO	LM CT109
Neg. Cash Volume:	0	Dressed Formula Vol: 4,853
Live Steer Avg:	N/A	Steer/Heifer Avg: \$202.46
Live Heifer Avg:	N/A	Dressed Neg. Grid Vol: 264
Dressed Steer Avg:	N/A	Steer/Heifer Avg: \$204.33
Dressed Heifer Avg:	N/A	TOTAL VOLUME: 5,117
LM CT106	TOTAL WK TO DATE VOLUME:	15,522
Committed:	4,354	Delivered: 7,648

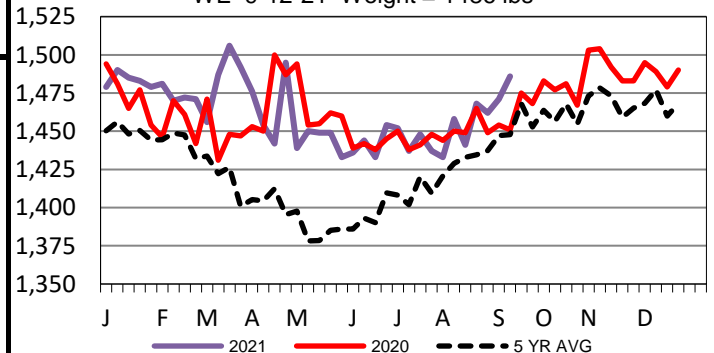
LM CT137	IA-MN	LM CT109
Neg. Cash Volume:	2,526	Dressed Formula Vol: 1,950
Live Steer Avg:	\$123.91	Steer/Heifer Avg: \$203.41
Live Heifer Avg:	N/A	Dressed Neg. Grid Vol: 1,292
Dressed Steer Avg:	\$196.99	Steer/Heifer Avg: \$207.22
Dressed Heifer Avg:	\$196.00	TOTAL VOLUME: 5,768
LM CT106	TOTAL WK TO DATE VOLUME:	8,062
Committed:	6,344	Delivered: 7,111

For Tuesday cash trading in the Western Cornbelt was limited on light demand. In the Texas Panhandle and Nebraska cash trading was mostly inactive on light demand. In Kansas cash trading was at a standstill. Last week in the Texas Panhandle live traded mostly at 124.00. In Kansas live traded from 123.00-124.00 for the prior week. Last week in Nebraska live and dressed traded from 124.00-126.00 and 198.00-203.00, respectively. Last week in the Western Cornbelt live and dressed traded from 124.00-127.00 and 198.00- 203.00, respectively.

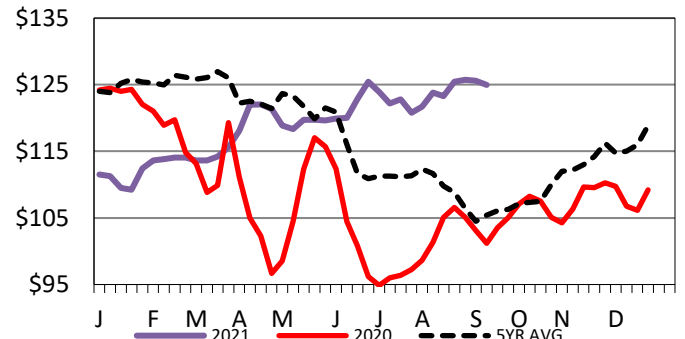
Iowa-Minnesota Wkly Dress Steer Wtd Avg
WE 9-12-21 Price = \$200.82



5-Area Negotiated Cash Live Steer Weights
WE 9-12-21 Weight = 1486 lbs



5-Area Live Steer Weighted Average
WE 9-12-21 Price = \$124.96



USDA Livestock, Poultry and Grain Market News

St. Joseph, Missouri

Phone: 816-676-7000

stjoe.lpgmn@ams.usda.gov