

## Daily Direct Steer and Heifer Slaughter Cattle Summary

For Trade on:

Thursday, September 09, 2021

<a href="#">LM CT100</a>	<b>5-AREA</b>	<a href="#">LM CT109</a>
<b>Neg. Cash Volume:</b>	24,381	<b>Dressed Formula Vol:</b> 28,252
Live Steer Avg:	\$125.15	Steer/Heifer Avg: \$202.56
Live Heifer Avg:	\$124.00	<b>Dressed Neg. Grid Vol:</b> 3,918
Dressed Steer Avg:	\$198.09	Steer/Heifer Avg: \$206.15
Dressed Heifer Avg:	\$198.26	<b>TOTAL VOLUME:</b> 56,551
<a href="#">LM CT106</a>	<b>TOTAL WK TO DATE VOLUME:</b>	<b>193,027</b>
<b>Committed:</b>	<b>101,600</b>	<b>Delivered:</b> 67,561

<a href="#">LM CT118</a>	<b>TX-OK-NM</b>	<a href="#">LM CT109</a>
<b>Neg. Cash Volume:</b>	0	<b>Dressed Formula Vol:</b> 7,757
Live Steer Avg:	N/A	Steer/Heifer Avg: \$199.54
Live Heifer Avg:	N/A	<b>Dressed Neg. Grid Vol:</b> 0
Dressed Steer Avg:	N/A	Steer/Heifer Avg: N/A
Dressed Heifer Avg:	N/A	<b>TOTAL VOLUME:</b> 7,757
<a href="#">LM CT106</a>	<b>TOTAL WK TO DATE VOLUME:</b>	<b>42,737</b>
<b>Committed:</b>	<b>14,673</b>	<b>Delivered:</b> 19,542

<a href="#">LM CT121</a>	<b>KANSAS</b>	<a href="#">LM CT109</a>
<b>Neg. Cash Volume:</b>	2,403	<b>Dressed Formula Vol:</b> 8,352
Live Steer Avg:	\$123.00	Steer/Heifer Avg: \$198.63
Live Heifer Avg:	\$123.00	<b>Dressed Neg. Grid Vol:</b> 124
Dressed Steer Avg:	\$194.00	Steer/Heifer Avg: \$210.59
Dressed Heifer Avg:	N/A	<b>TOTAL VOLUME:</b> 10,879
<a href="#">LM CT106</a>	<b>TOTAL WK TO DATE VOLUME:</b>	<b>59,438</b>
<b>Committed:</b>	<b>21,644</b>	<b>Delivered:</b> 17,113

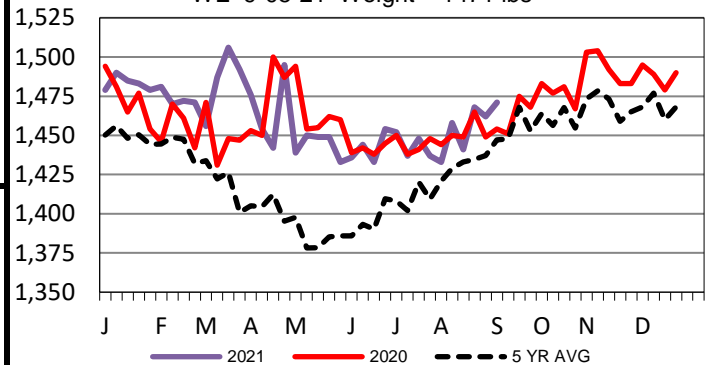
<a href="#">LM CT124</a>	<b>NEBRASKA</b>	<a href="#">LM CT109</a>
<b>Neg. Cash Volume:</b>	11,296	<b>Dressed Formula Vol:</b> 9,422
Live Steer Avg:	\$124.72	Steer/Heifer Avg: \$207.90
Live Heifer Avg:	\$124.15	<b>Dressed Neg. Grid Vol:</b> 2,668
Dressed Steer Avg:	\$198.59	Steer/Heifer Avg: \$206.20
Dressed Heifer Avg:	\$198.99	<b>TOTAL VOLUME:</b> 23,386
<a href="#">LM CT106</a>	<b>TOTAL WK TO DATE VOLUME:</b>	<b>53,665</b>
<b>Committed:</b>	<b>40,934</b>	<b>Delivered:</b> 15,417

<a href="#">LM CT134</a>	<b>COLORADO</b>	<a href="#">LM CT109</a>
<b>Neg. Cash Volume:</b>	0	<b>Dressed Formula Vol:</b> 605
Live Steer Avg:	N/A	Steer/Heifer Avg: \$197.78
Live Heifer Avg:	N/A	<b>Dressed Neg. Grid Vol:</b> 196
Dressed Steer Avg:	N/A	Steer/Heifer Avg: \$199.20
Dressed Heifer Avg:	N/A	<b>TOTAL VOLUME:</b> 801
<a href="#">LM CT106</a>	<b>TOTAL WK TO DATE VOLUME:</b>	<b>12,402</b>
<b>Committed:</b>	<b>7,756</b>	<b>Delivered:</b> 7,184

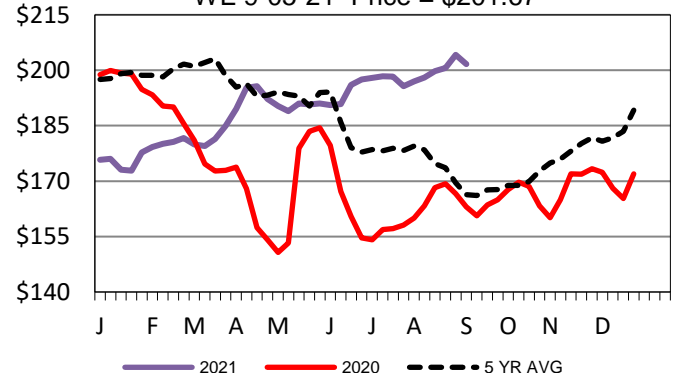
<a href="#">LM CT137</a>	<b>IA-MN</b>	<a href="#">LM CT109</a>
<b>Neg. Cash Volume:</b>	10,682	<b>Dressed Formula Vol:</b> 2,220
Live Steer Avg:	\$125.87	Steer/Heifer Avg: \$206.51
Live Heifer Avg:	\$125.53	<b>Dressed Neg. Grid Vol:</b> 930
Dressed Steer Avg:	\$197.96	Steer/Heifer Avg: \$206.85
Dressed Heifer Avg:	\$197.51	<b>TOTAL VOLUME:</b> 13,832
<a href="#">LM CT106</a>	<b>TOTAL WK TO DATE VOLUME:</b>	<b>25,279</b>
<b>Committed:</b>	<b>16,593</b>	<b>Delivered:</b> 8,305

Thursday cash trading was slow with moderate demand in Nebraska and Western Cornbelt. In Nebraska live traded 1.00-2.00 lower from 124.00-125.00 and dressed traded 5.00 lower at 198.00. In the Western Cornbelt live traded steady to 2.00 higher from 124.00-127.00. Wednesday dressed traded at 203.00. Thursday in Kansas cash trading was limited on light demand. A few live traded steady at 123.00. Thursday in Texas cash trading was at a standstill. Wednesday live from 123.00-124.00.

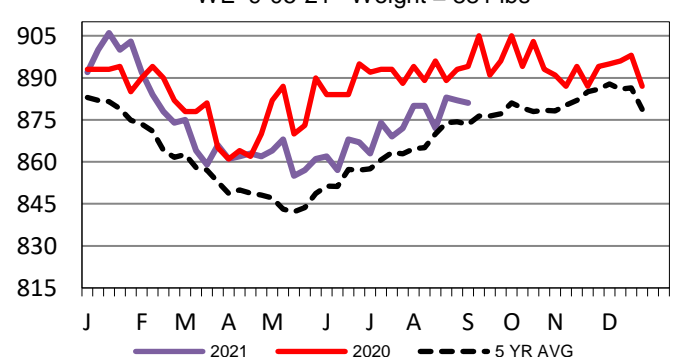
**5-Area Negotiated Cash Live Steer Weights**  
WE 9-05-21 Weight = 1471 lbs



**Nebraska Weekly Dressed Steer Weighted Avg**  
WE 9-05-21 Price = \$201.67



**Kansas Formula Carcass Weights**  
WE 9-05-21 Weight = 881 lbs



## USDA Livestock, Poultry and Grain Market News

St. Joseph, Missouri

Phone: 816-676-7000

[stjoe.lpgmn@ams.usda.gov](mailto:stjoe.lpgmn@ams.usda.gov)