

Daily Direct Steer and Heifer Slaughter Cattle Summary

For Trade on:

Tuesday, September 07, 2021

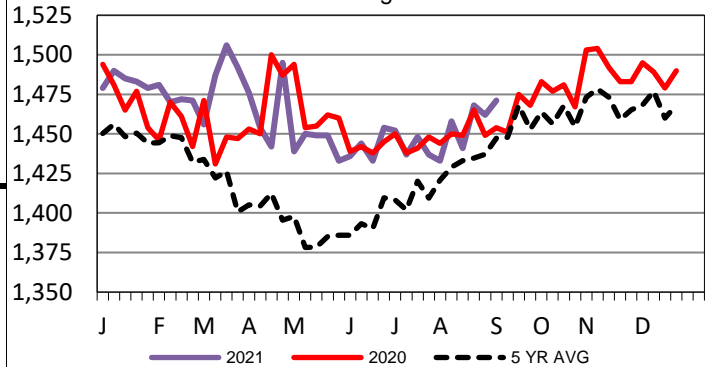
LM CT100	5-AREA	LM CT109
Neg. Cash Volume:	7,195	Dressed Formula Vol: 56,724
Live Steer Avg:	\$124.00	Steer/Heifer Avg: \$201.27
Live Heifer Avg:	\$124.00	Dressed Neg. Grid Vol: 3,473
Dressed Steer Avg:	N/A	Steer/Heifer Avg: \$199.53
Dressed Heifer Avg:	N/A	TOTAL VOLUME: 67,392
LM CT106	TOTAL WK TO DATE VOLUME:	
Committed:	91,903	Delivered: 76,902

For Tuesday cash trading in the Southern Plains was limited on light demand. In the Texas Panhandle live traded steady at 124.00 compared to last week. In Kansas live traded steady to 1.00 higher at 124.00 compared to the prior week. For Tuesday in Nebraska and Western Cornbelt cash trading was mostly inactive on very light demand. For the previous week in Nebraska live and dressed traded from 125.00-126.00 and 200.00-203.00, respectively. Last week in the Western Cornbelt live and dressed traded from 125.00-128.00 and 200.00-203.00, respectively.

LM CT118	TX-OK-NM	LM CT109
Neg. Cash Volume:	3,016	Dressed Formula Vol: 15,700
Live Steer Avg:	\$124.00	Steer/Heifer Avg: \$197.91
Live Heifer Avg:	\$124.00	Dressed Neg. Grid Vol: 227
Dressed Steer Avg:	N/A	Steer/Heifer Avg: \$186.49
Dressed Heifer Avg:	N/A	TOTAL VOLUME: 18,943
LM CT106	TOTAL WK TO DATE VOLUME:	
Committed:	34,023	Delivered: 18,218

5-Area Negotiated Cash Live Steer Weights

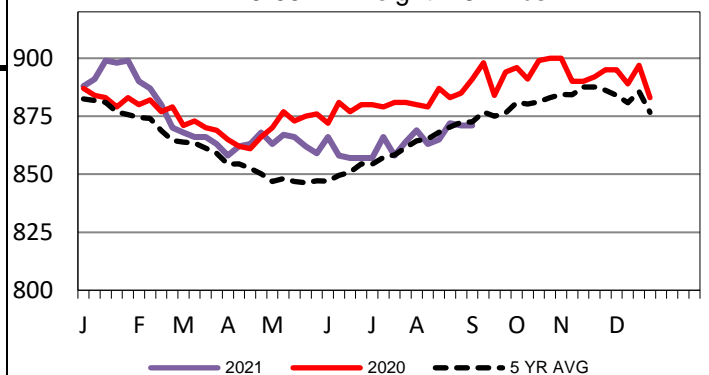
WE 9-05-21 Weight = 1471 lbs



LM CT121	KANSAS	LM CT109
Neg. Cash Volume:	3,228	Dressed Formula Vol: 26,295
Live Steer Avg:	\$124.00	Steer/Heifer Avg: \$197.36
Live Heifer Avg:	\$124.00	Dressed Neg. Grid Vol: 1,292
Dressed Steer Avg:	N/A	Steer/Heifer Avg: \$196.95
Dressed Heifer Avg:	N/A	TOTAL VOLUME: 30,815
LM CT106	TOTAL WK TO DATE VOLUME:	
Committed:	22,970	Delivered: 21,641

5-Area Formula Carcass Weight

WE 9-05-21 Weight = 871 lbs

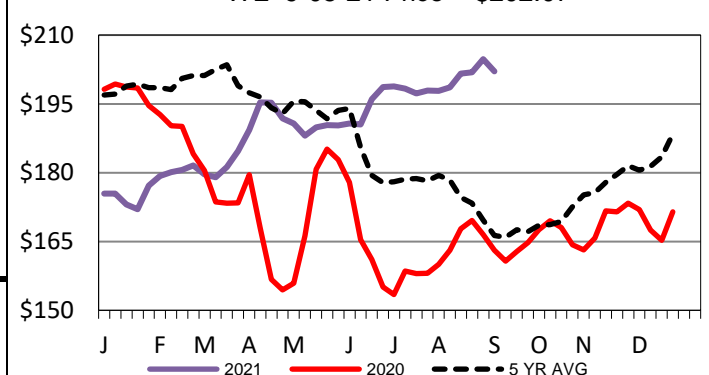


LM CT124	NEBRASKA	LM CT109
Neg. Cash Volume:	912	Dressed Formula Vol: 8,569
Live Steer Avg:	N/A	Steer/Heifer Avg: \$214.25
Live Heifer Avg:	N/A	Dressed Neg. Grid Vol: 1,012
Dressed Steer Avg:	N/A	Steer/Heifer Avg: \$203.28
Dressed Heifer Avg:	N/A	TOTAL VOLUME: 10,493
LM CT106	TOTAL WK TO DATE VOLUME:	
Committed:	18,194	Delivered: 19,841

LM CT134	COLORADO	LM CT109
Neg. Cash Volume:	0	Dressed Formula Vol: 4,855
Live Steer Avg:	N/A	Steer/Heifer Avg: \$208.11
Live Heifer Avg:	N/A	Dressed Neg. Grid Vol: 0
Dressed Steer Avg:	N/A	Steer/Heifer Avg: N/A
Dressed Heifer Avg:	N/A	TOTAL VOLUME: 4,855
LM CT106	TOTAL WK TO DATE VOLUME:	
Committed:	8,809	Delivered: 9,123

Iowa-Minnesota Wkly Dress Steer Wtd Avg

WE 9-05-21 Price = \$202.07



LM CT137	IA-MN	LM CT109
Neg. Cash Volume:	39	Dressed Formula Vol: 1,466
Live Steer Avg:	N/A	Steer/Heifer Avg: \$208.76
Live Heifer Avg:	N/A	Dressed Neg. Grid Vol: 942
Dressed Steer Avg:	N/A	Steer/Heifer Avg: \$202.20
Dressed Heifer Avg:	N/A	TOTAL VOLUME: 2,447
LM CT106	TOTAL WK TO DATE VOLUME:	
Committed:	7,907	Delivered: 8,079

USDA Livestock, Poultry and Grain Market News

St. Joseph, Missouri

Phone: 816-676-7000

stjoe.lpgmn@ams.usda.gov