

## Daily Direct Steer and Heifer Slaughter Cattle Summary

For Trade on:

Tuesday, August 31, 2021

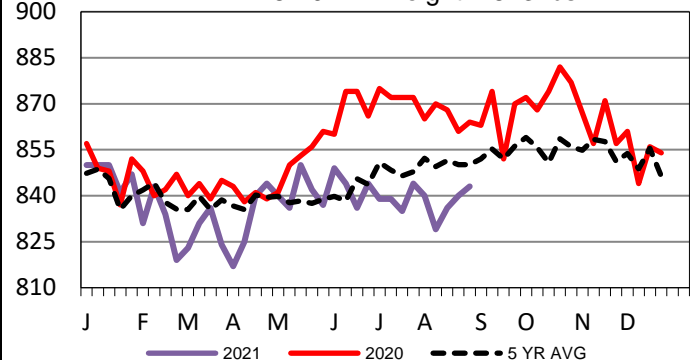
<a href="#">LM CT100</a>	<b>5-AREA</b>	<a href="#">LM CT109</a>
<b>Neg. Cash Volume:</b>	454	<b>Dressed Formula Vol:</b> 30,668
Live Steer Avg:	N/A	Steer/Heifer Avg: \$202.14
Live Heifer Avg:	N/A	<b>Dressed Neg. Grid Vol:</b> 2,904
Dressed Steer Avg:	\$200.00	Steer/Heifer Avg: \$201.22
Dressed Heifer Avg:	N/A	<b>TOTAL VOLUME:</b> 34,026
<a href="#">LM CT106</a>	<b>TOTAL WK TO DATE VOLUME:</b>	<b>104,878</b>
<b>Committed:</b>	<b>87,419</b>	<b>Delivered:</b> 65,658

For Tuesday negotiated cash trading was mostly inactive on very light demand in the Western Cornbelt. Not enough purchases for a full market trend. Negotiated cash trading was at a standstill in all other major feeding regions. Last week in the Texas Panhandle live purchases traded from 122.00-123.00. In Kansas last week, live purchases traded at 123.00. In Nebraska and the Western Cornbelt last week live and dressed purchases traded at 128.00 and from 202.00-208.00, respectively.

<a href="#">LM CT118</a>	<b>TX-OK-NM</b>	<a href="#">LM CT109</a>
<b>Neg. Cash Volume:</b>	0	<b>Dressed Formula Vol:</b> 9,251
Live Steer Avg:	N/A	Steer/Heifer Avg: \$199.72
Live Heifer Avg:	N/A	<b>Dressed Neg. Grid Vol:</b> 0
Dressed Steer Avg:	N/A	Steer/Heifer Avg: N/A
Dressed Heifer Avg:	N/A	<b>TOTAL VOLUME:</b> 9,251
<a href="#">LM CT106</a>	<b>TOTAL WK TO DATE VOLUME:</b>	<b>28,151</b>
<b>Committed:</b>	<b>25,275</b>	<b>Delivered:</b> 15,570

## TX-OK-NM Formula Carcass Weights

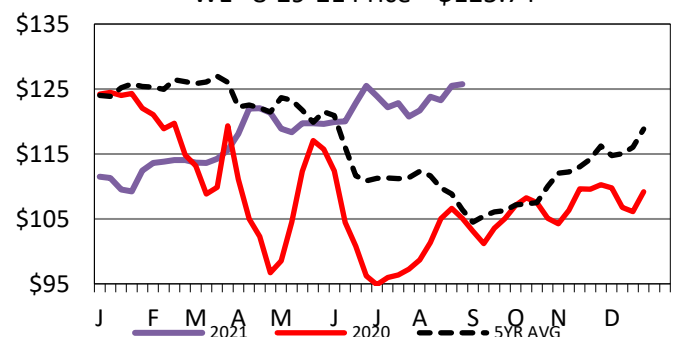
WE 8-29-21 Weight = 843 lbs



<a href="#">LM CT121</a>	<b>KANSAS</b>	<a href="#">LM CT109</a>
<b>Neg. Cash Volume:</b>	0	<b>Dressed Formula Vol:</b> 11,860
Live Steer Avg:	N/A	Steer/Heifer Avg: \$197.53
Live Heifer Avg:	N/A	<b>Dressed Neg. Grid Vol:</b> 285
Dressed Steer Avg:	N/A	Steer/Heifer Avg: \$194.87
Dressed Heifer Avg:	N/A	<b>TOTAL VOLUME:</b> 12,145
<a href="#">LM CT106</a>	<b>TOTAL WK TO DATE VOLUME:</b>	<b>44,992</b>
<b>Committed:</b>	<b>22,423</b>	<b>Delivered:</b> 18,715

## 5-Area Live Steer Weighted Average

WE 8-29-21 Price = \$125.74

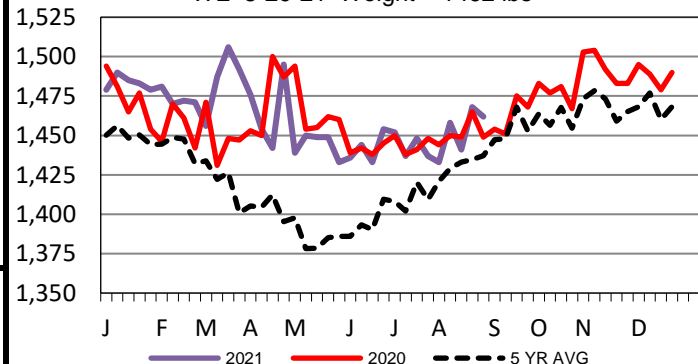


<a href="#">LM CT124</a>	<b>NEBRASKA</b>	<a href="#">LM CT109</a>
<b>Neg. Cash Volume:</b>	37	<b>Dressed Formula Vol:</b> 5,341
Live Steer Avg:	N/A	Steer/Heifer Avg: \$212.53
Live Heifer Avg:	N/A	<b>Dressed Neg. Grid Vol:</b> 560
Dressed Steer Avg:	N/A	Steer/Heifer Avg: \$198.41
Dressed Heifer Avg:	N/A	<b>TOTAL VOLUME:</b> 5,938
<a href="#">LM CT106</a>	<b>TOTAL WK TO DATE VOLUME:</b>	<b>17,350</b>
<b>Committed:</b>	<b>15,720</b>	<b>Delivered:</b> 15,243

<a href="#">LM CT134</a>	<b>COLORADO</b>	<a href="#">LM CT109</a>
<b>Neg. Cash Volume:</b>	0	<b>Dressed Formula Vol:</b> 3,263
Live Steer Avg:	N/A	Steer/Heifer Avg: \$204.73
Live Heifer Avg:	N/A	<b>Dressed Neg. Grid Vol:</b> 1,216
Dressed Steer Avg:	N/A	Steer/Heifer Avg: \$198.85
Dressed Heifer Avg:	N/A	<b>TOTAL VOLUME:</b> 4,479
<a href="#">LM CT106</a>	<b>TOTAL WK TO DATE VOLUME:</b>	<b>9,983</b>
<b>Committed:</b>	<b>13,313</b>	<b>Delivered:</b> 6,983

## 5-Area Negotiated Cash Live Steer Weights

WE 8-29-21 Weight = 1462 lbs



<a href="#">LM CT137</a>	<b>IA-MN</b>	<a href="#">LM CT109</a>
<b>Neg. Cash Volume:</b>	417	<b>Dressed Formula Vol:</b> 1,100
Live Steer Avg:	N/A	Steer/Heifer Avg: \$215.28
Live Heifer Avg:	N/A	<b>Dressed Neg. Grid Vol:</b> 843
Dressed Steer Avg:	\$200.00	Steer/Heifer Avg: \$208.64
Dressed Heifer Avg:	N/A	<b>TOTAL VOLUME:</b> 2,360
<a href="#">LM CT106</a>	<b>TOTAL WK TO DATE VOLUME:</b>	<b>4,655</b>
<b>Committed:</b>	<b>10,688</b>	<b>Delivered:</b> 9,147

## USDA Livestock, Poultry and Grain Market News

St. Joseph, Missouri

Phone: 816-676-7000

[stjoe.lpgmn@ams.usda.gov](mailto:stjoe.lpgmn@ams.usda.gov)