

Daily Direct Steer and Heifer Slaughter Cattle Summary

For Trade on:

Monday, August 30, 2021

LM CT100	5-AREA	LM CT109
Neg. Cash Volume:	1,565	Dressed Formula Vol: 63,869
Live Steer Avg:	\$128.00	Steer/Heifer Avg: \$198.35
Live Heifer Avg:	N/A	Dressed Neg. Grid Vol: 5,418
Dressed Steer Avg:	N/A	Steer/Heifer Avg: \$198.44
Dressed Heifer Avg:	N/A	TOTAL VOLUME: 70,852
LM CT106	TOTAL WK TO DATE VOLUME:	70,852
Committed:	48,778	Delivered: 75,313

For Monday negotiated cash trading was mostly inactive on very light demand in the Western Cornbelt. Not enough purchases for a full market trend. Negotiated cash trading was at a standstill in all other major feeding regions. Last week in the Texas Panhandle live purchases traded from 122.00-123.00. In Kansas last week, live purchases traded at 123.00. In Nebraska and the Western Cornbelt last week live and dressed purchases traded at 128.00 and from 202.00-208.00, respectively.

LM CT118	TX-OK-NM	LM CT109
Neg. Cash Volume:	0	Dressed Formula Vol: 18,900
Live Steer Avg:	N/A	Steer/Heifer Avg: \$196.95
Live Heifer Avg:	N/A	Dressed Neg. Grid Vol: 0
Dressed Steer Avg:	N/A	Steer/Heifer Avg: N/A
Dressed Heifer Avg:	N/A	TOTAL VOLUME: 18,900
LM CT106	TOTAL WK TO DATE VOLUME:	18,900
Committed:	17,245	Delivered: 17,193

LM CT121	KANSAS	LM CT109
Neg. Cash Volume:	0	Dressed Formula Vol: 30,440
Live Steer Avg:	N/A	Steer/Heifer Avg: \$195.82
Live Heifer Avg:	N/A	Dressed Neg. Grid Vol: 2,407
Dressed Steer Avg:	N/A	Steer/Heifer Avg: \$194.67
Dressed Heifer Avg:	N/A	TOTAL VOLUME: 32,847
LM CT106	TOTAL WK TO DATE VOLUME:	32,847
Committed:	12,347	Delivered: 22,324

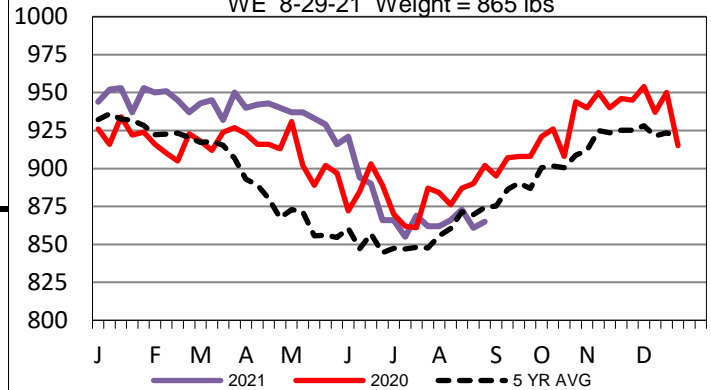
LM CT124	NEBRASKA	LM CT109
Neg. Cash Volume:	1,302	Dressed Formula Vol: 8,765
Live Steer Avg:	N/A	Steer/Heifer Avg: \$205.81
Live Heifer Avg:	N/A	Dressed Neg. Grid Vol: 1,345
Dressed Steer Avg:	N/A	Steer/Heifer Avg: \$201.61
Dressed Heifer Avg:	N/A	TOTAL VOLUME: 11,412
LM CT106	TOTAL WK TO DATE VOLUME:	11,412
Committed:	12,661	Delivered: 20,360

LM CT134	COLORADO	LM CT109
Neg. Cash Volume:	0	Dressed Formula Vol: 4,808
Live Steer Avg:	N/A	Steer/Heifer Avg: \$204.01
Live Heifer Avg:	N/A	Dressed Neg. Grid Vol: 696
Dressed Steer Avg:	N/A	Steer/Heifer Avg: \$200.64
Dressed Heifer Avg:	N/A	TOTAL VOLUME: 5,504
LM CT106	TOTAL WK TO DATE VOLUME:	5,504
Committed:	849	Delivered: 6,669

LM CT137	IA-MN	LM CT109
Neg. Cash Volume:	263	Dressed Formula Vol: 994
Live Steer Avg:	\$128.00	Steer/Heifer Avg: \$209.64
Live Heifer Avg:	N/A	Dressed Neg. Grid Vol: 1,038
Dressed Steer Avg:	N/A	Steer/Heifer Avg: \$202.26
Dressed Heifer Avg:	N/A	TOTAL VOLUME: 2,295
LM CT106	TOTAL WK TO DATE VOLUME:	2,295
Committed:	5,676	Delivered: 8,767

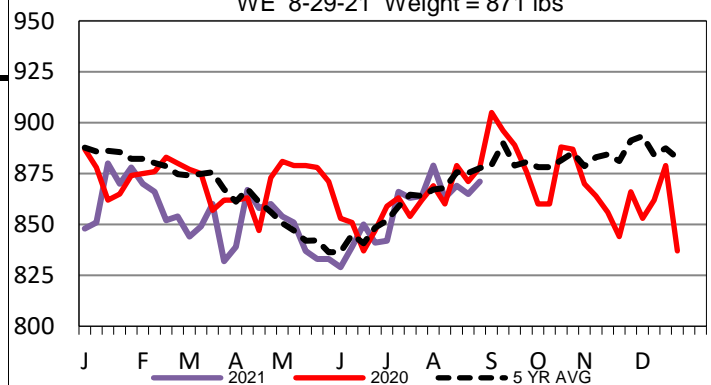
Iowa-Minnesota Formula Carcass Weights

WE 8-29-21 Weight = 865 lbs



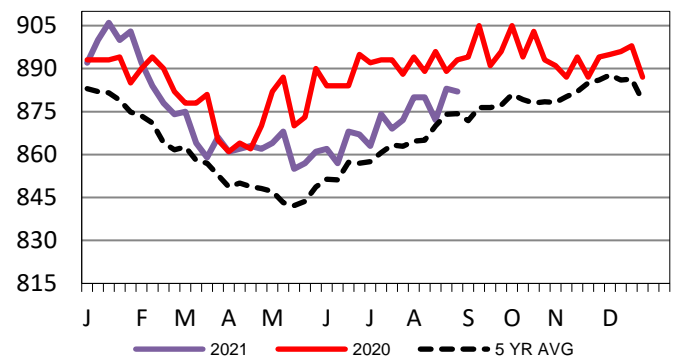
Colorado Formula Carcass Weights

WE 8-29-21 Weight = 871 lbs



Kansas Formula Carcass Weights

WE 8-29-21 Weight = 882 lbs



USDA Livestock, Poultry and Grain Market News

St. Joseph, Missouri

Phone: 816-676-7000

stjoe.lpgmn@ams.usda.gov