

## Daily Direct Steer and Heifer Slaughter Cattle Summary

For Trade on:

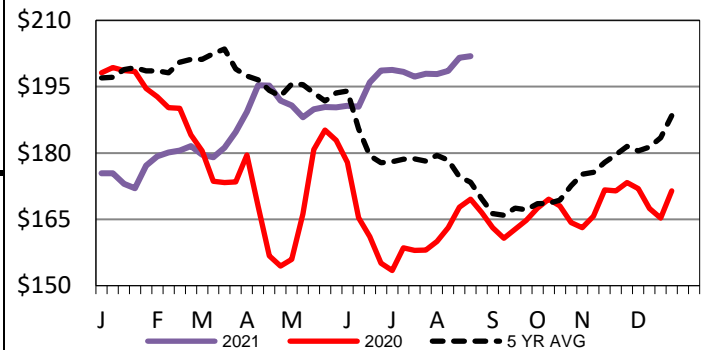
Thursday, August 26, 2021

<a href="#">LM CT100</a>	<b>5-AREA</b>	<a href="#">LM CT109</a>
<b>Neg. Cash Volume:</b>	24,196	<b>Dressed Formula Vol:</b> 47,649
Live Steer Avg:	\$125.09	Steer/Heifer Avg: \$200.48
Live Heifer Avg:	\$123.93	<b>Dressed Neg. Grid Vol:</b> 2,974
Dressed Steer Avg:	\$203.21	Steer/Heifer Avg: \$201.62
Dressed Heifer Avg:	\$202.05	<b>TOTAL VOLUME:</b> 74,819
<a href="#">LM CT106</a>	<b>TOTAL WK TO DATE VOLUME:</b>	<b>221,328</b>
<b>Committed:</b>	<b>81,978</b>	<b>Delivered:</b> 65,705

For Thursday negotiated cash trading was slow on light demand. In Texas, compared to last week, live traded 1.00-2.00 higher at 123.00. In Kansas, compared to last week, live traded 1.00 higher at 123.00. In Nebraska a few live and dressed purchases traded at 128.00 and 202.00. In the Western Cornbelt a few live and dressed traded at 128.00 and from 202.00-206.50. In Nebraska for the prior week live and dressed traded from 125.00-127.00 and at 200.00. In the Western Cornbelt for the previous week live and dressed purchases traded at 127.00 and from 200.00-205.00.

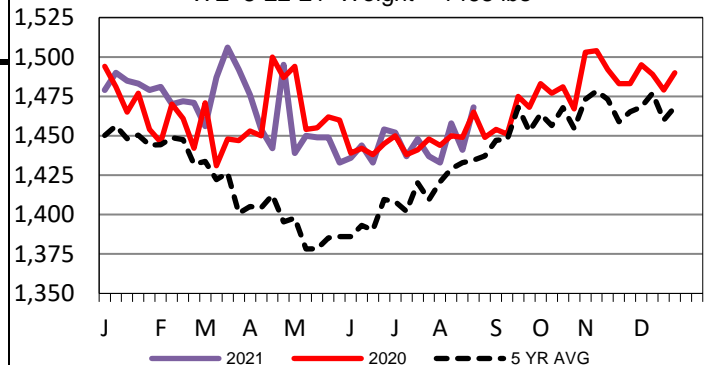
<a href="#">LM CT118</a>	<b>TX-OK-NM</b>	<a href="#">LM CT109</a>
<b>Neg. Cash Volume:</b>	3,175	<b>Dressed Formula Vol:</b> 19,198
Live Steer Avg:	\$122.47	Steer/Heifer Avg: \$196.36
Live Heifer Avg:	\$122.83	<b>Dressed Neg. Grid Vol:</b> 0
Dressed Steer Avg:	N/A	Steer/Heifer Avg: N/A
Dressed Heifer Avg:	N/A	<b>TOTAL VOLUME:</b> 22,373
<a href="#">LM CT106</a>	<b>TOTAL WK TO DATE VOLUME:</b>	<b>62,722</b>
<b>Committed:</b>	<b>15,835</b>	<b>Delivered:</b> 16,165

**Iowa-Minnesota Wkly Dress Steer Wtd Avg**  
WE 8-22-21 Price = \$201.90



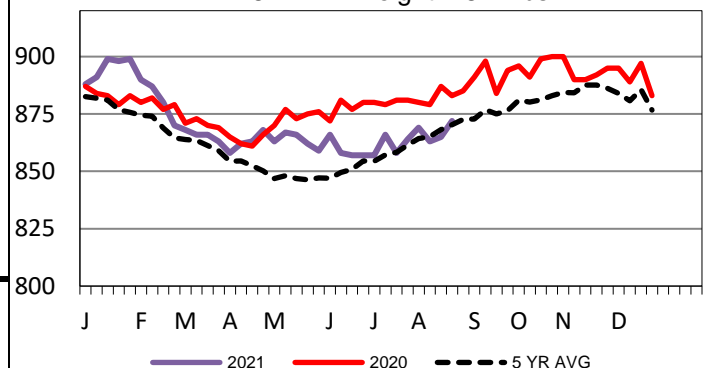
<a href="#">LM CT121</a>	<b>KANSAS</b>	<a href="#">LM CT109</a>
<b>Neg. Cash Volume:</b>	6,122	<b>Dressed Formula Vol:</b> 9,786
Live Steer Avg:	\$122.91	Steer/Heifer Avg: \$195.36
Live Heifer Avg:	\$123.00	<b>Dressed Neg. Grid Vol:</b> 0
Dressed Steer Avg:	N/A	Steer/Heifer Avg: N/A
Dressed Heifer Avg:	N/A	<b>TOTAL VOLUME:</b> 15,908
<a href="#">LM CT106</a>	<b>TOTAL WK TO DATE VOLUME:</b>	<b>66,790</b>
<b>Committed:</b>	<b>22,000</b>	<b>Delivered:</b> 16,709

**5-Area Negotiated Cash Live Steer Weights**  
WE 8-22-21 Weight = 1468 lbs



<a href="#">LM CT124</a>	<b>NEBRASKA</b>	<a href="#">LM CT109</a>
<b>Neg. Cash Volume:</b>	6,294	<b>Dressed Formula Vol:</b> 12,244
Live Steer Avg:	\$127.67	Steer/Heifer Avg: \$205.82
Live Heifer Avg:	\$125.00	<b>Dressed Neg. Grid Vol:</b> 1,433
Dressed Steer Avg:	\$202.45	Steer/Heifer Avg: \$200.67
Dressed Heifer Avg:	\$202.00	<b>TOTAL VOLUME:</b> 19,971
<a href="#">LM CT106</a>	<b>TOTAL WK TO DATE VOLUME:</b>	<b>48,009</b>
<b>Committed:</b>	<b>20,676</b>	<b>Delivered:</b> 18,099

**5-Area Formula Carcass Weight**  
WE 8-22-21 Weight = 872 lbs



<a href="#">LM CT134</a>	<b>COLORADO</b>	<a href="#">LM CT109</a>
<b>Neg. Cash Volume:</b>	0	<b>Dressed Formula Vol:</b> 4,312
Live Steer Avg:	N/A	Steer/Heifer Avg: \$211.57
Live Heifer Avg:	N/A	<b>Dressed Neg. Grid Vol:</b> 0
Dressed Steer Avg:	N/A	Steer/Heifer Avg: N/A
Dressed Heifer Avg:	N/A	<b>TOTAL VOLUME:</b> 4,312
<a href="#">LM CT106</a>	<b>TOTAL WK TO DATE VOLUME:</b>	<b>16,263</b>
<b>Committed:</b>	<b>10,406</b>	<b>Delivered:</b> 7,593

<a href="#">LM CT137</a>	<b>IA-MN</b>	<a href="#">LM CT109</a>
<b>Neg. Cash Volume:</b>	8,605	<b>Dressed Formula Vol:</b> 2,499
Live Steer Avg:	\$128.05	Steer/Heifer Avg: \$208.59
Live Heifer Avg:	\$128.00	<b>Dressed Neg. Grid Vol:</b> 1,541
Dressed Steer Avg:	\$203.83	Steer/Heifer Avg: \$202.51
Dressed Heifer Avg:	\$202.07	<b>TOTAL VOLUME:</b> 12,645
<a href="#">LM CT106</a>	<b>TOTAL WK TO DATE VOLUME:</b>	<b>28,372</b>
<b>Committed:</b>	<b>13,061</b>	<b>Delivered:</b> 7,139

## USDA Livestock, Poultry and Grain Market News

St. Joseph, Missouri

Phone: 816-676-7000

[stjoe.lpgmn@ams.usda.gov](mailto:stjoe.lpgmn@ams.usda.gov)