

## Daily Direct Steer and Heifer Slaughter Cattle Summary

For Trade on:

Wednesday, August 25, 2021

<a href="#">LM CT100</a>	<b>5-AREA</b>	<a href="#">LM CT109</a>
<b>Neg. Cash Volume:</b>	6,609	<b>Dressed Formula Vol:</b> 24,302
Live Steer Avg:	\$128.34	Steer/Heifer Avg: \$201.47
Live Heifer Avg:	\$120.80	<b>Dressed Neg. Grid Vol:</b> 4,404
Dressed Steer Avg:	\$204.31	Steer/Heifer Avg: \$198.39
Dressed Heifer Avg:	\$203.44	<b>TOTAL VOLUME:</b> 35,315
<a href="#">LM CT106</a>	<b>TOTAL WK TO DATE VOLUME:</b>	<b>146,509</b>
<b>Committed:</b>	<b>53,426</b>	<b>Delivered:</b> 61,250

<a href="#">LM CT118</a>	<b>TX-OK-NM</b>	<a href="#">LM CT109</a>
<b>Neg. Cash Volume:</b>	578	<b>Dressed Formula Vol:</b> 8,597
Live Steer Avg:	N/A	Steer/Heifer Avg: \$195.43
Live Heifer Avg:	\$120.22	<b>Dressed Neg. Grid Vol:</b> 80
Dressed Steer Avg:	N/A	Steer/Heifer Avg: \$190.76
Dressed Heifer Avg:	N/A	<b>TOTAL VOLUME:</b> 9,255
<a href="#">LM CT106</a>	<b>TOTAL WK TO DATE VOLUME:</b>	<b>40,349</b>
<b>Committed:</b>	<b>8,498</b>	<b>Delivered:</b> 17,869

<a href="#">LM CT121</a>	<b>KANSAS</b>	<a href="#">LM CT109</a>
<b>Neg. Cash Volume:</b>	0	<b>Dressed Formula Vol:</b> 6,647
Live Steer Avg:	N/A	Steer/Heifer Avg: \$196.21
Live Heifer Avg:	N/A	<b>Dressed Neg. Grid Vol:</b> 41
Dressed Steer Avg:	N/A	Steer/Heifer Avg: \$201.47
Dressed Heifer Avg:	N/A	<b>TOTAL VOLUME:</b> 6,688
<a href="#">LM CT106</a>	<b>TOTAL WK TO DATE VOLUME:</b>	<b>50,882</b>
<b>Committed:</b>	<b>17,811</b>	<b>Delivered:</b> 14,222

<a href="#">LM CT124</a>	<b>NEBRASKA</b>	<a href="#">LM CT109</a>
<b>Neg. Cash Volume:</b>	2,987	<b>Dressed Formula Vol:</b> 4,742
Live Steer Avg:	\$127.50	Steer/Heifer Avg: \$207.43
Live Heifer Avg:	N/A	<b>Dressed Neg. Grid Vol:</b> 1,466
Dressed Steer Avg:	\$203.34	Steer/Heifer Avg: \$199.28
Dressed Heifer Avg:	\$204.93	<b>TOTAL VOLUME:</b> 9,195
<a href="#">LM CT106</a>	<b>TOTAL WK TO DATE VOLUME:</b>	<b>28,038</b>
<b>Committed:</b>	<b>14,547</b>	<b>Delivered:</b> 14,604

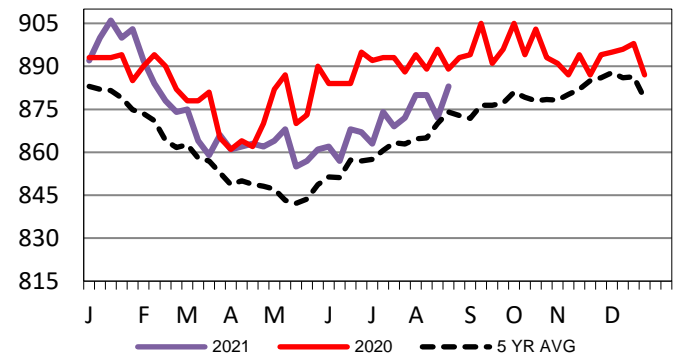
<a href="#">LM CT134</a>	<b>COLORADO</b>	<a href="#">LM CT109</a>
<b>Neg. Cash Volume:</b>	0	<b>Dressed Formula Vol:</b> 2,272
Live Steer Avg:	N/A	Steer/Heifer Avg: \$225.23
Live Heifer Avg:	N/A	<b>Dressed Neg. Grid Vol:</b> 1,642
Dressed Steer Avg:	N/A	Steer/Heifer Avg: \$195.00
Dressed Heifer Avg:	N/A	<b>TOTAL VOLUME:</b> 3,914
<a href="#">LM CT106</a>	<b>TOTAL WK TO DATE VOLUME:</b>	<b>11,951</b>
<b>Committed:</b>	<b>4,807</b>	<b>Delivered:</b> 7,272

<a href="#">LM CT137</a>	<b>IA-MN</b>	<a href="#">LM CT109</a>
<b>Neg. Cash Volume:</b>	3,044	<b>Dressed Formula Vol:</b> 2,164
Live Steer Avg:	\$128.49	Steer/Heifer Avg: \$203.55
Live Heifer Avg:	\$128.00	<b>Dressed Neg. Grid Vol:</b> 1,186
Dressed Steer Avg:	\$206.23	Steer/Heifer Avg: \$202.49
Dressed Heifer Avg:	\$202.43	<b>TOTAL VOLUME:</b> 6,394
<a href="#">LM CT106</a>	<b>TOTAL WK TO DATE VOLUME:</b>	<b>15,727</b>
<b>Committed:</b>	<b>7,763</b>	<b>Delivered:</b> 7,283

For Wednesday cash trading was limited on light demand in Nebraska and West Cornbelt with light demand. In the Texas Panhandle cash trading was inactive on light demand. In Kansas trading was at a standstill. Last week in the Texas Panhandle live traded from 121.00-122.00. In Kansas last week live purchases traded at 122.00. In Nebraska for the prior week live and dressed traded from 125.00-127.00 and at 200.00, respectively. In the West Cornbelt for the previous week live and dressed purchases traded at 127.00 and from 200.00-205.00, respectively.

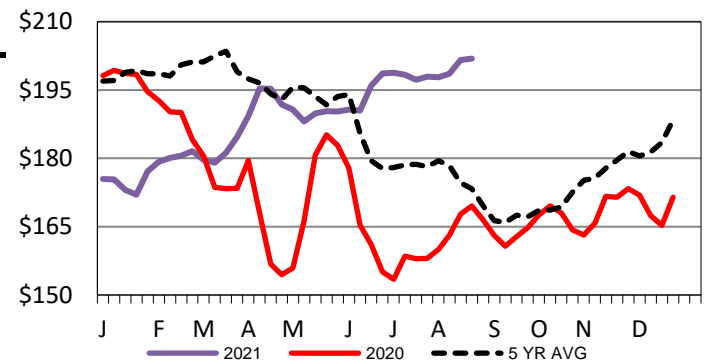
## Kansas Formula Carcass Weights

WE 8-22-21 Weight = 883 lbs



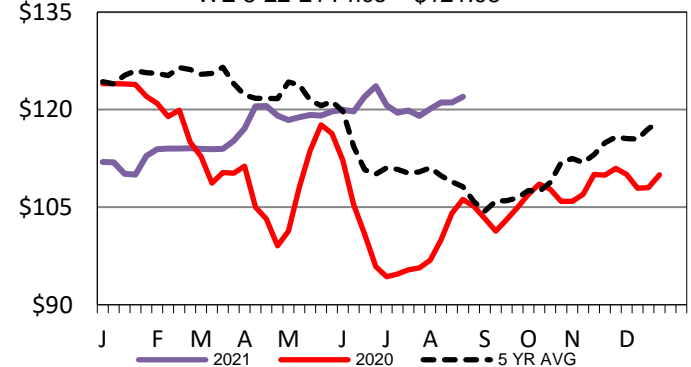
## Iowa-Minnesota Wkly Dress Steer Wtd Avg

WE 8-22-21 Price = \$201.90



## Kansas Weekly Live Steer Weighted Average

WE 8-22-21 Price = \$121.98



## USDA Livestock, Poultry and Grain Market News

St. Joseph, Missouri

Phone: 816-676-7000

[stjoe.lpgmn@ams.usda.gov](mailto:stjoe.lpgmn@ams.usda.gov)