

Daily Direct Steer and Heifer Slaughter Cattle Summary

For Trade on:

Wednesday, August 18, 2021

LM CT100	5-AREA	LM CT109
Neg. Cash Volume:	37,782	Dressed Formula Vol: 30,956
Live Steer Avg:	\$126.38	Steer/Heifer Avg: \$199.56
Live Heifer Avg:	\$124.32	Dressed Neg. Grid Vol: 1,181
Dressed Steer Avg:	\$200.30	Steer/Heifer Avg: \$198.74
Dressed Heifer Avg:	\$200.81	TOTAL VOLUME: 69,919
LM CT106	TOTAL WK TO DATE VOLUME:	185,421
Committed:	116,866	Delivered: 73,105

LM CT118	TX-OK-NM	LM CT109
Neg. Cash Volume:	2,440	Dressed Formula Vol: 8,988
Live Steer Avg:	\$121.17	Steer/Heifer Avg: \$196.01
Live Heifer Avg:	\$121.24	Dressed Neg. Grid Vol: 0
Dressed Steer Avg:	N/A	Steer/Heifer Avg: N/A
Dressed Heifer Avg:	N/A	TOTAL VOLUME: 11,428
LM CT106	TOTAL WK TO DATE VOLUME:	43,498
Committed:	22,873	Delivered: 20,558

LM CT121	KANSAS	LM CT109
Neg. Cash Volume:	230	Dressed Formula Vol: 7,945
Live Steer Avg:	N/A	Steer/Heifer Avg: \$196.97
Live Heifer Avg:	\$123.00	Dressed Neg. Grid Vol: 197
Dressed Steer Avg:	\$200.00	Steer/Heifer Avg: \$199.76
Dressed Heifer Avg:	N/A	TOTAL VOLUME: 8,372
LM CT106	TOTAL WK TO DATE VOLUME:	47,953
Committed:	15,286	Delivered: 20,175

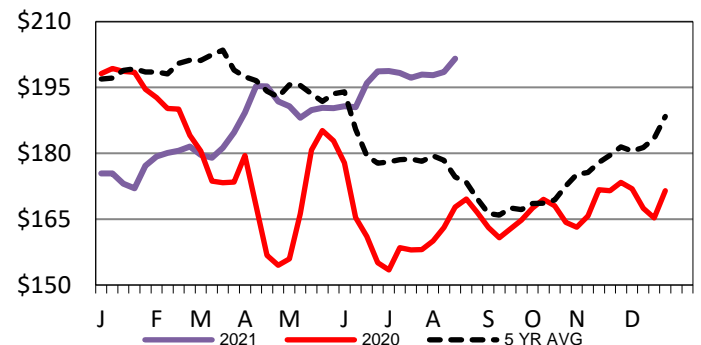
LM CT124	NEBRASKA	LM CT109
Neg. Cash Volume:	21,237	Dressed Formula Vol: 11,031
Live Steer Avg:	\$126.36	Steer/Heifer Avg: \$203.91
Live Heifer Avg:	\$125.76	Dressed Neg. Grid Vol: 206
Dressed Steer Avg:	\$200.17	Steer/Heifer Avg: \$197.70
Dressed Heifer Avg:	\$200.98	TOTAL VOLUME: 32,474
LM CT106	TOTAL WK TO DATE VOLUME:	61,909
Committed:	41,992	Delivered: 17,256

LM CT134	COLORADO	LM CT109
Neg. Cash Volume:	0	Dressed Formula Vol: 2,072
Live Steer Avg:	N/A	Steer/Heifer Avg: \$197.40
Live Heifer Avg:	N/A	Dressed Neg. Grid Vol: 228
Dressed Steer Avg:	N/A	Steer/Heifer Avg: \$197.14
Dressed Heifer Avg:	N/A	TOTAL VOLUME: 2,300
LM CT106	TOTAL WK TO DATE VOLUME:	13,760
Committed:	17,824	Delivered: 7,631

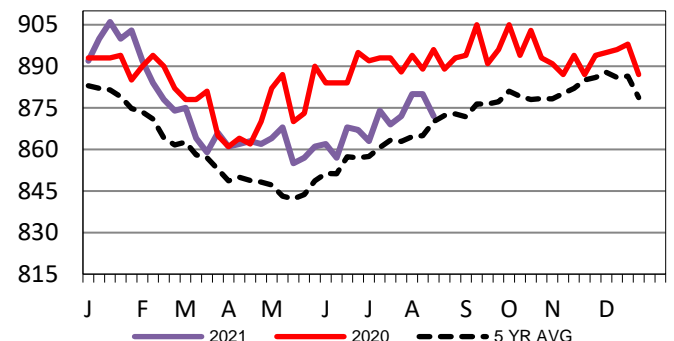
LM CT137	IA-MN	LM CT109
Neg. Cash Volume:	13,875	Dressed Formula Vol: 1,084
Live Steer Avg:	\$126.89	Steer/Heifer Avg: \$210.57
Live Heifer Avg:	\$126.53	Dressed Neg. Grid Vol: 586
Dressed Steer Avg:	\$200.58	Steer/Heifer Avg: \$199.52
Dressed Heifer Avg:	\$199.44	TOTAL VOLUME: 15,545
LM CT106	TOTAL WK TO DATE VOLUME:	26,341
Committed:	18,891	Delivered: 7,485

Wednesday in Nebraska and Western Cornbelt cash trading was moderate on moderate to good demand. In Nebraska live traded mostly steady to 2.00 lower from 125.00-127.00, with a few up to 128.00. Dressed traded mostly 2.00 higher at 200.00, with a few up to 205.00. In the Western Cornbelt live traded steady at 127.00, with a few up to 128.00. Dressed traded unevenly steady at 200.00, with a few up to 205.00. For Wednesday in the Texas Panhandle cash trading was slow with light demand. In Kansas cash trading was mostly inactive. Last week live traded at 121.00.

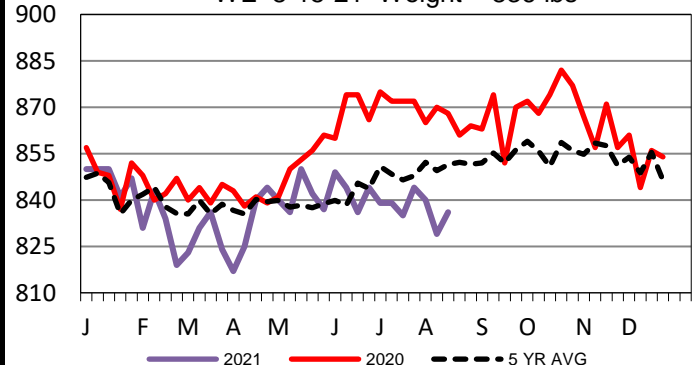
Iowa-Minnesota Wkly Dress Steer Wtd Avg
WE 8-15-21 Price = \$201.57



Kansas Formula Carcass Weights
WE 8-15-21 Weight = 872 lbs



TX-OK-NM Formula Carcass Weights
WE 8-15-21 Weight = 836 lbs



USDA Livestock, Poultry and Grain Market News

St. Joseph, Missouri

Phone: 816-676-7000

stjoe.lpgmn@ams.usda.gov