

Daily Direct Steer and Heifer Slaughter Cattle Summary

For Trade on:

Tuesday, August 17, 2021

LM CT100	5-AREA	LM CT109
Neg. Cash Volume:	10,694	Dressed Formula Vol: 34,009
Live Steer Avg:	\$126.86	Steer/Heifer Avg: \$200.69
Live Heifer Avg:	\$126.76	Dressed Neg. Grid Vol: 5,312
Dressed Steer Avg:	\$203.01	Steer/Heifer Avg: \$198.90
Dressed Heifer Avg:	\$199.52	TOTAL VOLUME: 50,015
LM CT106	TOTAL WK TO DATE VOLUME:	115,502
Committed:	67,171	Delivered: 70,004

LM CT118	TX-OK-NM	LM CT109
Neg. Cash Volume:	0	Dressed Formula Vol: 11,511
Live Steer Avg:	N/A	Steer/Heifer Avg: \$195.74
Live Heifer Avg:	N/A	Dressed Neg. Grid Vol: 0
Dressed Steer Avg:	N/A	Steer/Heifer Avg: N/A
Dressed Heifer Avg:	N/A	TOTAL VOLUME: 11,511
LM CT106	TOTAL WK TO DATE VOLUME:	32,070
Committed:	15,256	Delivered: 15,972

LM CT121	KANSAS	LM CT109
Neg. Cash Volume:	0	Dressed Formula Vol: 10,360
Live Steer Avg:	N/A	Steer/Heifer Avg: \$195.81
Live Heifer Avg:	N/A	Dressed Neg. Grid Vol: 468
Dressed Steer Avg:	N/A	Steer/Heifer Avg: \$196.34
Dressed Heifer Avg:	N/A	TOTAL VOLUME: 10,828
LM CT106	TOTAL WK TO DATE VOLUME:	39,581
Committed:	22,869	Delivered: 19,784

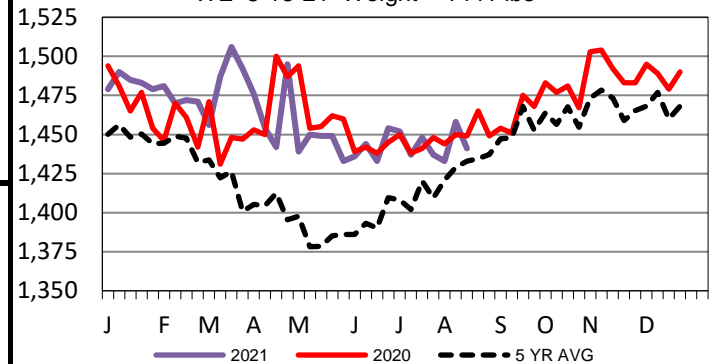
LM CT124	NEBRASKA	LM CT109
Neg. Cash Volume:	5,273	Dressed Formula Vol: 5,685
Live Steer Avg:	\$126.75	Steer/Heifer Avg: \$208.66
Live Heifer Avg:	\$127.00	Dressed Neg. Grid Vol: 3,017
Dressed Steer Avg:	\$202.82	Steer/Heifer Avg: \$198.58
Dressed Heifer Avg:	\$197.00	TOTAL VOLUME: 13,975
LM CT106	TOTAL WK TO DATE VOLUME:	29,435
Committed:	16,832	Delivered: 19,088

LM CT134	COLORADO	LM CT109
Neg. Cash Volume:	0	Dressed Formula Vol: 5,761
Live Steer Avg:	N/A	Steer/Heifer Avg: \$210.55
Live Heifer Avg:	N/A	Dressed Neg. Grid Vol: 312
Dressed Steer Avg:	N/A	Steer/Heifer Avg: \$195.90
Dressed Heifer Avg:	N/A	TOTAL VOLUME: 6,073
LM CT106	TOTAL WK TO DATE VOLUME:	11,460
Committed:	2,637	Delivered: 6,806

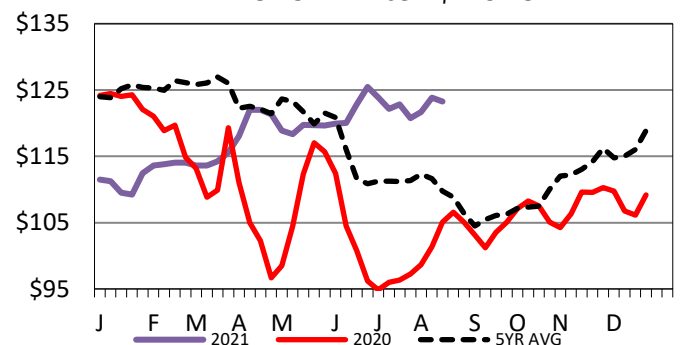
LM CT137	IA-MN	LM CT109
Neg. Cash Volume:	5,421	Dressed Formula Vol: 841
Live Steer Avg:	\$127.00	Steer/Heifer Avg: \$206.77
Live Heifer Avg:	\$126.67	Dressed Neg. Grid Vol: 1,515
Dressed Steer Avg:	\$203.15	Steer/Heifer Avg: \$200.97
Dressed Heifer Avg:	\$204.00	TOTAL VOLUME: 7,777
LM CT106	TOTAL WK TO DATE VOLUME:	10,796
Committed:	9,577	Delivered: 8,354

Tuesday in Nebraska and Western Cornbelt cash trading was limited with light demand. In Nebraska, compared to last week, live traded 1.00-4.00 higher at 127.00. Last week dressed traded at 198.00. In the Western Cornbelt, compared to last week, live traded 1.00-2.00 higher at 127.00. A few dressed purchases traded at 204.00. Last week dressed traded 198.00-204.00. For Tuesday in the Southern Plains cash trading was at a standstill. Last week in the Southern Plains live traded at 121.00.

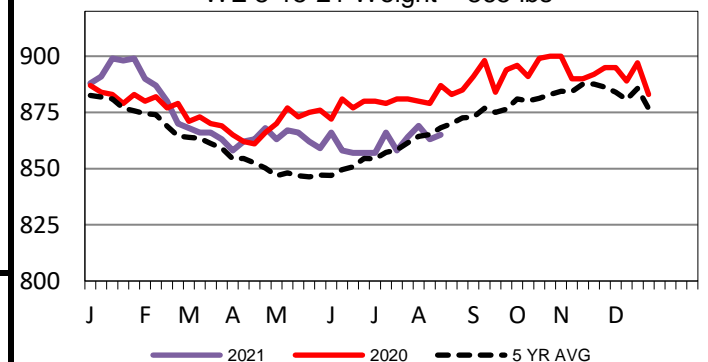
5-Area Negotiated Cash Live Steer Weights
WE 8-15-21 Weight = 1441 lbs



5-Area Live Steer Weighted Average
WE 8-15-21 Price = \$123.28



5-Area Formula Carcass Weight
WE 8-15-21 Weight = 865 lbs



USDA Livestock, Poultry and Grain Market News

St. Joseph, Missouri

Phone: 816-676-7000

stjoe.lpgmn@ams.usda.gov