

Daily Direct Steer and Heifer Slaughter Cattle Summary

For Trade on:

Friday, August 13, 2021

LM CT100	5-AREA	LM CT109
Neg. Cash Volume:	10,697	Dressed Formula Vol: 45,885
Live Steer Avg:	\$125.14	Steer/Heifer Avg: \$195.85
Live Heifer Avg:	\$124.06	Dressed Neg. Grid Vol: 2,882
Dressed Steer Avg:	\$202.49	Steer/Heifer Avg: \$198.78
Dressed Heifer Avg:	\$204.75	TOTAL VOLUME: 59,464
LM CT106	TOTAL WK TO DATE VOLUME:	281,772
Committed:	96,893	Delivered: 101,302

LM CT118	TX-OK-NM	LM CT109
Neg. Cash Volume:	56	Dressed Formula Vol: 12,811
Live Steer Avg:	N/A	Steer/Heifer Avg: \$192.50
Live Heifer Avg:	N/A	Dressed Neg. Grid Vol: 0
Dressed Steer Avg:	N/A	Steer/Heifer Avg: N/A
Dressed Heifer Avg:	N/A	TOTAL VOLUME: 12,867
LM CT106	TOTAL WK TO DATE VOLUME:	65,819
Committed:	35,351	Delivered: 22,560

LM CT121	KANSAS	LM CT109
Neg. Cash Volume:	94	Dressed Formula Vol: 20,354
Live Steer Avg:	\$121.00	Steer/Heifer Avg: \$194.99
Live Heifer Avg:	N/A	Dressed Neg. Grid Vol: 297
Dressed Steer Avg:	N/A	Steer/Heifer Avg: \$197.03
Dressed Heifer Avg:	N/A	TOTAL VOLUME: 20,745
LM CT106	TOTAL WK TO DATE VOLUME:	100,755
Committed:	22,108	Delivered: 32,251

LM CT124	NEBRASKA	LM CT109
Neg. Cash Volume:	6,630	Dressed Formula Vol: 5,530
Live Steer Avg:	\$124.21	Steer/Heifer Avg: \$199.68
Live Heifer Avg:	\$124.06	Dressed Neg. Grid Vol: 1,209
Dressed Steer Avg:	\$201.35	Steer/Heifer Avg: \$199.06
Dressed Heifer Avg:	\$204.75	TOTAL VOLUME: 13,369
LM CT106	TOTAL WK TO DATE VOLUME:	59,192
Committed:	20,772	Delivered: 27,841

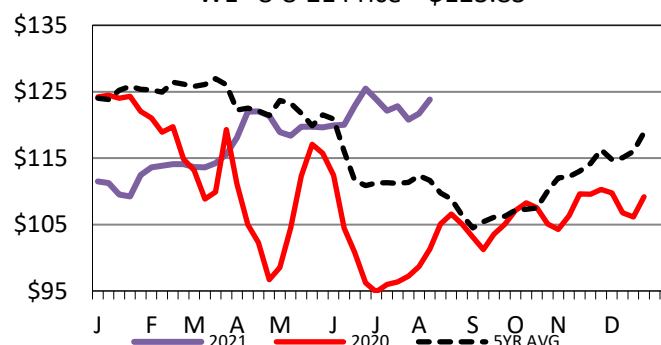
LM CT134	COLORADO	LM CT109
Neg. Cash Volume:	0	Dressed Formula Vol: 5,439
Live Steer Avg:	N/A	Steer/Heifer Avg: \$201.12
Live Heifer Avg:	N/A	Dressed Neg. Grid Vol: 415
Dressed Steer Avg:	N/A	Steer/Heifer Avg: \$194.35
Dressed Heifer Avg:	N/A	TOTAL VOLUME: 5,854
LM CT106	TOTAL WK TO DATE VOLUME:	24,585
Committed:	10,267	Delivered: 7,608

LM CT137	IA-MN	LM CT109
Neg. Cash Volume:	3,917	Dressed Formula Vol: 1,871
Live Steer Avg:	\$126.74	Steer/Heifer Avg: \$201.43
Live Heifer Avg:	N/A	Dressed Neg. Grid Vol: 961
Dressed Steer Avg:	\$203.66	Steer/Heifer Avg: \$200.87
Dressed Heifer Avg:	N/A	TOTAL VOLUME: 6,749
LM CT106	TOTAL WK TO DATE VOLUME:	33,078
Committed:	8,395	Delivered: 11,042

Friday in the Southern Plains cash trading was mostly inactive with light demand. In Nebraska and Western Cornbelt cash trading was slow with moderate demand. In Nebraska a few live traded from 124.00-125.00. No trend in any region. In the Southern Plains on Wednesday live purchases traded at 121.00. In Nebraska on Thursday live and dressed purchases traded from 123.00-126.00 and at 198.00, respectively. In the Western Cornbelt on Thursday live and dressed purchases traded from 125.00-126.00 and from 198.00-203.00, respectively.

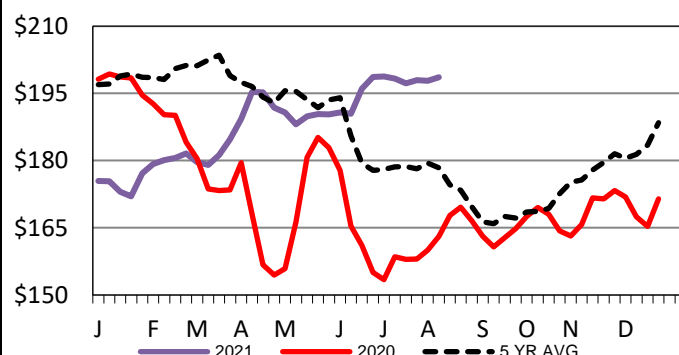
5-Area Live Steer Weighted Average

WE 8-8-21 Price = \$123.83



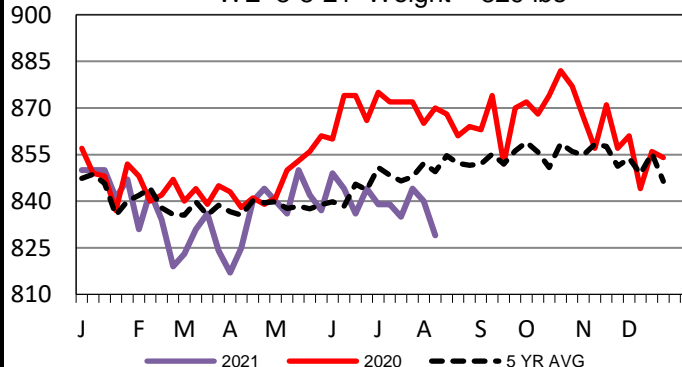
Iowa-Minnesota Wkly Dress Steer Wtd Avg

WE 8-8-21 Price = \$198.57



TX-OK-NM Formula Carcass Weights

WE 8-8-21 Weight = 829 lbs



USDA Livestock, Poultry and Grain Market News

St. Joseph, Missouri

Phone: 816-676-7000

stjoe.lpgmn@ams.usda.gov