

Daily Direct Steer and Heifer Slaughter Cattle Summary

For Trade on:

Saturday, August 14, 2021

| | | |
|--------------------------|---------------------------------|-------------------------------------|
| LM CT100 | 5-AREA | LM CT109 |
| Neg. Cash Volume: | 16,891 | Dressed Formula Vol: 37,863 |
| Live Steer Avg: | \$124.75 | Steer/Heifer Avg: \$196.99 |
| Live Heifer Avg: | \$124.75 | Dressed Neg. Grid Vol: 3,444 |
| Dressed Steer Avg: | \$200.07 | Steer/Heifer Avg: \$199.15 |
| Dressed Heifer Avg: | \$198.77 | TOTAL VOLUME: 58,198 |
| LM CT106 | TOTAL WK TO DATE VOLUME: | 222,308 |
| Committed: | 81,329 | Delivered: 67,117 |

| | | |
|--------------------------|---------------------------------|------------------------------------|
| LM CT118 | TX-OK-NM | LM CT109 |
| Neg. Cash Volume: | 0 | Dressed Formula Vol: 10,960 |
| Live Steer Avg: | N/A | Steer/Heifer Avg: \$193.70 |
| Live Heifer Avg: | N/A | Dressed Neg. Grid Vol: 0 |
| Dressed Steer Avg: | N/A | Steer/Heifer Avg: N/A |
| Dressed Heifer Avg: | N/A | TOTAL VOLUME: 10,960 |
| LM CT106 | TOTAL WK TO DATE VOLUME: | 52,952 |
| Committed: | 8,650 | Delivered: 21,477 |

| | | |
|--------------------------|---------------------------------|------------------------------------|
| LM CT121 | KANSAS | LM CT109 |
| Neg. Cash Volume: | 246 | Dressed Formula Vol: 15,810 |
| Live Steer Avg: | N/A | Steer/Heifer Avg: \$194.50 |
| Live Heifer Avg: | N/A | Dressed Neg. Grid Vol: 156 |
| Dressed Steer Avg: | N/A | Steer/Heifer Avg: \$196.82 |
| Dressed Heifer Avg: | N/A | TOTAL VOLUME: 16,212 |
| LM CT106 | TOTAL WK TO DATE VOLUME: | 80,010 |
| Committed: | 22,711 | Delivered: 15,071 |

| | | |
|--------------------------|---------------------------------|-------------------------------------|
| LM CT124 | NEBRASKA | LM CT109 |
| Neg. Cash Volume: | 9,044 | Dressed Formula Vol: 5,128 |
| Live Steer Avg: | \$124.31 | Steer/Heifer Avg: \$203.51 |
| Live Heifer Avg: | \$124.02 | Dressed Neg. Grid Vol: 1,774 |
| Dressed Steer Avg: | \$199.15 | Steer/Heifer Avg: \$198.69 |
| Dressed Heifer Avg: | \$198.77 | TOTAL VOLUME: 15,946 |
| LM CT106 | TOTAL WK TO DATE VOLUME: | 45,823 |
| Committed: | 28,863 | Delivered: 18,427 |

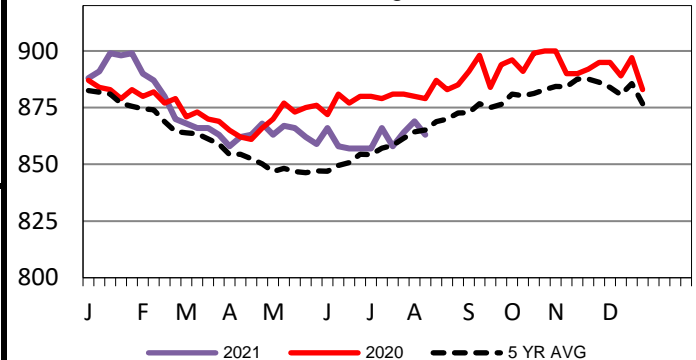
| | | |
|--------------------------|---------------------------------|-----------------------------------|
| LM CT134 | COLORADO | LM CT109 |
| Neg. Cash Volume: | 0 | Dressed Formula Vol: 4,803 |
| Live Steer Avg: | N/A | Steer/Heifer Avg: \$204.68 |
| Live Heifer Avg: | N/A | Dressed Neg. Grid Vol: 320 |
| Dressed Steer Avg: | N/A | Steer/Heifer Avg: \$196.16 |
| Dressed Heifer Avg: | N/A | TOTAL VOLUME: 5,123 |
| LM CT106 | TOTAL WK TO DATE VOLUME: | 18,731 |
| Committed: | 8,695 | Delivered: 5,352 |

| | | |
|--------------------------|---------------------------------|-------------------------------------|
| LM CT137 | IA-MN | LM CT109 |
| Neg. Cash Volume: | 7,601 | Dressed Formula Vol: 1,301 |
| Live Steer Avg: | \$125.32 | Steer/Heifer Avg: \$201.88 |
| Live Heifer Avg: | \$125.80 | Dressed Neg. Grid Vol: 1,194 |
| Dressed Steer Avg: | \$200.78 | Steer/Heifer Avg: \$198.85 |
| Dressed Heifer Avg: | N/A | TOTAL VOLUME: 10,096 |
| LM CT106 | TOTAL WK TO DATE VOLUME: | 26,329 |
| Committed: | 12,410 | Delivered: 6,790 |

Thursday in Nebraska and Western Cornbelt cash trading was slow on moderate demand. In Nebraska live traded unevenly steady from 123.00-126.00 and dressed traded steady at 198.00, with a few up to 203.00. In the Western Cornbelt live traded steady to 1.00 lower from 125.00-126.00. Dressed traded steady to 5.00 higher from 198.00-203.00. Thursday in the Southern Plains cash trading was mostly inactive with light demand. On Wednesday in the Southern Plains live traded at 121.00.

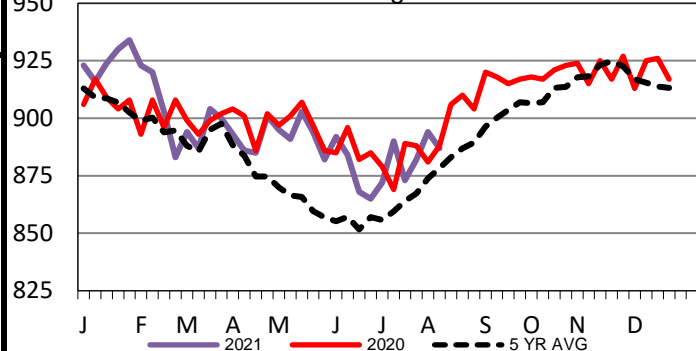
5-Area Formula Carcass Weight

WE 8-8-21 Weight = 863 lbs



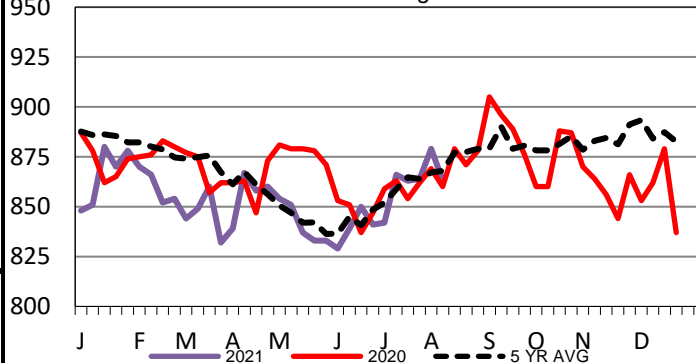
Nebraska Formula Carcass Weights

WE 8-8-21 Weight = 8874lbs



Colorado Formula Carcass Weights

WE 8-8-21 Weight = 863 lbs



USDA Livestock, Poultry and Grain Market News

St. Joseph, Missouri

Phone: 816-676-7000

stjoe.lpgmn@ams.usda.gov