

Daily Direct Steer and Heifer Slaughter Cattle Summary

For Trade on:

Wednesday, August 11, 2021

LM CT100	5-AREA	LM CT109
Neg. Cash Volume:	33,021	Dressed Formula Vol: 23,758
Live Steer Avg:	\$122.28	Steer/Heifer Avg: \$201.26
Live Heifer Avg:	\$121.45	Dressed Neg. Grid Vol: 1,339
Dressed Steer Avg:	\$199.89	Steer/Heifer Avg: \$199.15
Dressed Heifer Avg:	\$198.11	TOTAL VOLUME: 58,118
LM CT106	TOTAL WK TO DATE VOLUME:	164,110
Committed:	89,797	Delivered: 65,774

LM CT118	TX-OK-NM	LM CT109
Neg. Cash Volume:	5,526	Dressed Formula Vol: 6,441
Live Steer Avg:	\$120.75	Steer/Heifer Avg: \$193.55
Live Heifer Avg:	\$120.52	Dressed Neg. Grid Vol: 0
Dressed Steer Avg:	N/A	Steer/Heifer Avg: N/A
Dressed Heifer Avg:	N/A	TOTAL VOLUME: 11,967
LM CT106	TOTAL WK TO DATE VOLUME:	41,992
Committed:	24,633	Delivered: 16,303

LM CT121	KANSAS	LM CT109
Neg. Cash Volume:	14,860	Dressed Formula Vol: 5,414
Live Steer Avg:	\$121.00	Steer/Heifer Avg: \$195.78
Live Heifer Avg:	\$121.00	Dressed Neg. Grid Vol: 162
Dressed Steer Avg:	\$198.00	Steer/Heifer Avg: \$181.29
Dressed Heifer Avg:	\$198.00	TOTAL VOLUME: 20,436
LM CT106	TOTAL WK TO DATE VOLUME:	63,798
Committed:	23,420	Delivered: 17,703

LM CT124	NEBRASKA	LM CT109
Neg. Cash Volume:	5,089	Dressed Formula Vol: 8,746
Live Steer Avg:	\$123.84	Steer/Heifer Avg: \$202.20
Live Heifer Avg:	\$123.36	Dressed Neg. Grid Vol: 593
Dressed Steer Avg:	\$198.73	Steer/Heifer Avg: \$201.37
Dressed Heifer Avg:	\$198.00	TOTAL VOLUME: 14,428
LM CT106	TOTAL WK TO DATE VOLUME:	29,877
Committed:	20,606	Delivered: 16,651

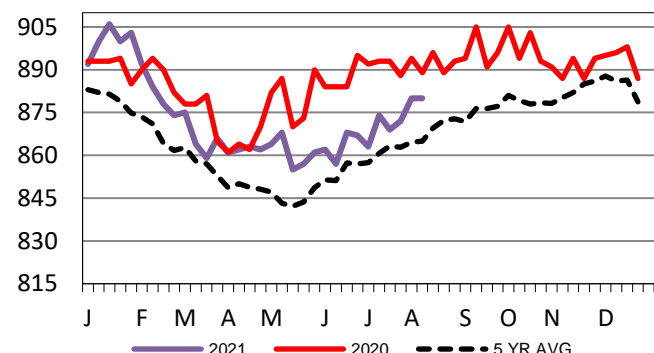
LM CT134	COLORADO	LM CT109
Neg. Cash Volume:	0	Dressed Formula Vol: 2,241
Live Steer Avg:	N/A	Steer/Heifer Avg: \$232.59
Live Heifer Avg:	N/A	Dressed Neg. Grid Vol: 0
Dressed Steer Avg:	N/A	Steer/Heifer Avg: N/A
Dressed Heifer Avg:	N/A	TOTAL VOLUME: 2,241
LM CT106	TOTAL WK TO DATE VOLUME:	13,608
Committed:	11,114	Delivered: 7,799

LM CT137	IA-MN	LM CT109
Neg. Cash Volume:	7,546	Dressed Formula Vol: 984
Live Steer Avg:	\$125.85	Steer/Heifer Avg: \$201.65
Live Heifer Avg:	\$126.00	Dressed Neg. Grid Vol: 584
Dressed Steer Avg:	\$201.43	Steer/Heifer Avg: \$201.86
Dressed Heifer Avg:	\$198.21	TOTAL VOLUME: 9,114
LM CT106	TOTAL WK TO DATE VOLUME:	16,233
Committed:	10,024	Delivered: 7,318

Wednesday in Texas cash trading was slow on light to moderate demand. In Texas live have traded mostly steady at 121.00. In Kansas cash trading and demand were moderate. Live traded steady at 121.00. Wednesday in Nebraska and Western Cornbelt cash trading was slow with light to moderate demand. In Nebraska a few live and dressed traded at 123.00 and 198.00. Not enough for a market trend. Last week live and dressed traded at 125.00 and 198.00. In the Western Cornbelt live traded steady to 1.00 higher at 126.00. Last week dressed traded at 198.00.

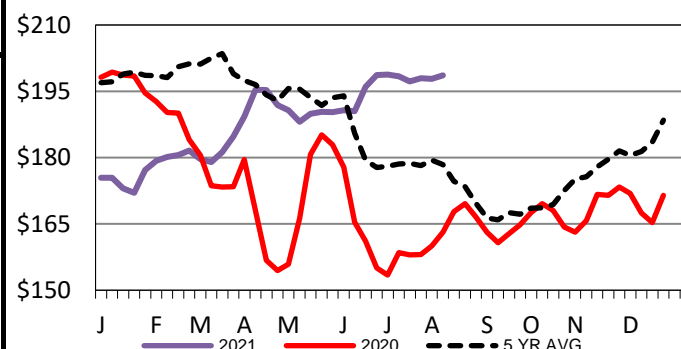
Kansas Formula Carcass Weights

WE 8-8-21 Weight = 880 lbs



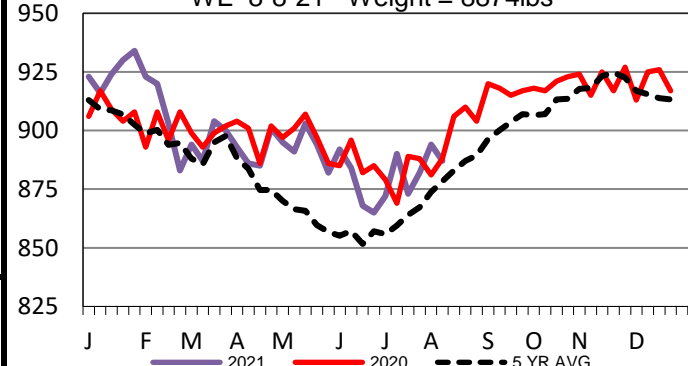
Iowa-Minnesota Wkly Dress Steer Wtd Avg

WE 8-8-21 Price = \$198.57



Nebraska Formula Carcass Weights

WE 8-8-21 Weight = 8874lbs



USDA Livestock, Poultry and Grain Market News

St. Joseph, Missouri

Phone: 816-676-7000

stjoe.lpgmn@ams.usda.gov