

Daily Direct Steer and Heifer Slaughter Cattle Summary

For Trade on:

Tuesday, August 10, 2021

LM CT100	5-AREA	LM CT109
Neg. Cash Volume:	1,805	Dressed Formula Vol: 31,401
Live Steer Avg:	\$125.00	Steer/Heifer Avg: \$197.82
Live Heifer Avg:	N/A	Dressed Neg. Grid Vol: 4,109
Dressed Steer Avg:	\$202.12	Steer/Heifer Avg: \$197.67
Dressed Heifer Avg:	\$203.00	TOTAL VOLUME: 37,315
LM CT106	TOTAL WK TO DATE VOLUME:	105,992
Committed:	65,935	Delivered: 67,811

LM CT118	TX-OK-NM	LM CT109
Neg. Cash Volume:	0	Dressed Formula Vol: 13,509
Live Steer Avg:	N/A	Steer/Heifer Avg: \$194.68
Live Heifer Avg:	N/A	Dressed Neg. Grid Vol: 165
Dressed Steer Avg:	N/A	Steer/Heifer Avg: \$195.77
Dressed Heifer Avg:	N/A	TOTAL VOLUME: 13,674
LM CT106	TOTAL WK TO DATE VOLUME:	30,025
Committed:	17,710	Delivered: 17,063

LM CT121	KANSAS	LM CT109
Neg. Cash Volume:	0	Dressed Formula Vol: 9,541
Live Steer Avg:	N/A	Steer/Heifer Avg: \$194.64
Live Heifer Avg:	N/A	Dressed Neg. Grid Vol: 188
Dressed Steer Avg:	N/A	Steer/Heifer Avg: \$192.32
Dressed Heifer Avg:	N/A	TOTAL VOLUME: 9,729
LM CT106	TOTAL WK TO DATE VOLUME:	42,497
Committed:	22,590	Delivered: 20,028

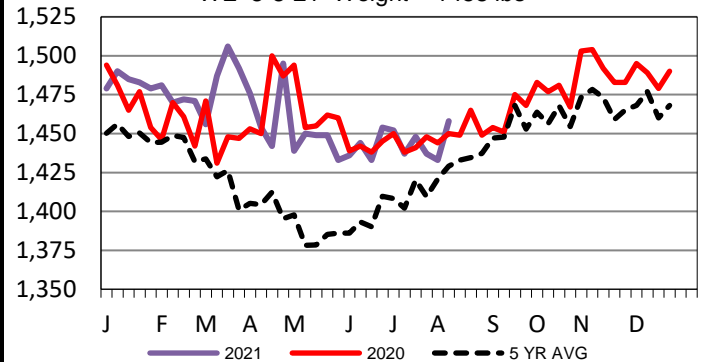
LM CT124	NEBRASKA	LM CT109
Neg. Cash Volume:	1,250	Dressed Formula Vol: 4,073
Live Steer Avg:	N/A	Steer/Heifer Avg: \$210.71
Live Heifer Avg:	N/A	Dressed Neg. Grid Vol: 1,872
Dressed Steer Avg:	\$203.00	Steer/Heifer Avg: \$197.22
Dressed Heifer Avg:	\$203.00	TOTAL VOLUME: 7,195
LM CT106	TOTAL WK TO DATE VOLUME:	15,449
Committed:	11,103	Delivered: 13,700

LM CT134	COLORADO	LM CT109
Neg. Cash Volume:	0	Dressed Formula Vol: 2,619
Live Steer Avg:	N/A	Steer/Heifer Avg: \$202.56
Live Heifer Avg:	N/A	Dressed Neg. Grid Vol: 377
Dressed Steer Avg:	N/A	Steer/Heifer Avg: \$195.13
Dressed Heifer Avg:	N/A	TOTAL VOLUME: 2,996
LM CT106	TOTAL WK TO DATE VOLUME:	11,367
Committed:	7,244	Delivered: 8,487

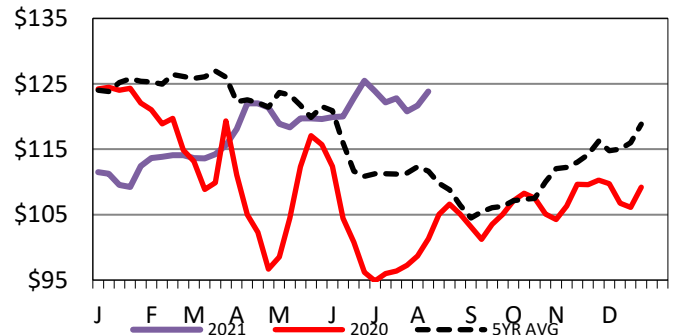
LM CT137	IA-MN	LM CT109
Neg. Cash Volume:	555	Dressed Formula Vol: 1,822
Live Steer Avg:	\$125.00	Steer/Heifer Avg: \$204.05
Live Heifer Avg:	N/A	Dressed Neg. Grid Vol: 1,589
Dressed Steer Avg:	\$200.00	Steer/Heifer Avg: \$200.05
Dressed Heifer Avg:	N/A	TOTAL VOLUME: 3,966
LM CT106	TOTAL WK TO DATE VOLUME:	7,119
Committed:	7,288	Delivered: 8,533

For Tuesday cash trading was at a standstill in the Southern Plains. In Nebraska cash trading was limited on light demand. A very few dressed traded at 203.00. In the Western Cornbelt cash trading was mostly inactive with light demand. Not enough purchases in any region for a market trend. Last week in the Southern Plains live traded at 121.00. For prior week in Nebraska live and dressed traded at 125.00 and 198.00, respectively. For the previous week in the Western Cornbelt live and dressed traded from 125.00-126.00 and at 198.00, respectively.

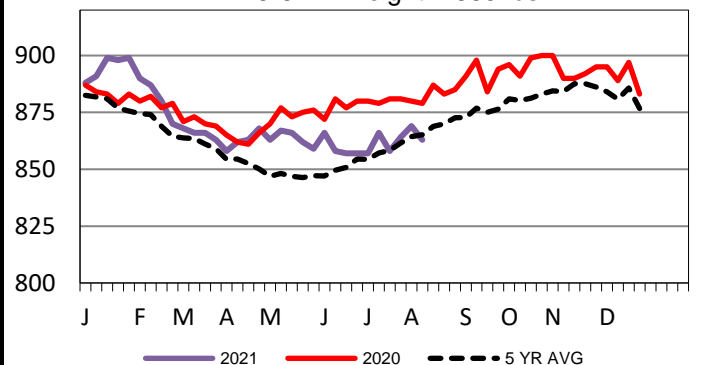
5-Area Negotiated Cash Live Steer Weights
WE 8-8-21 Weight = 1458 lbs



5-Area Live Steer Weighted Average
WE 8-8-21 Price = \$123.83



5-Area Formula Carcass Weight
WE 8-8-21 Weight = 863 lbs



USDA Livestock, Poultry and Grain Market News

St. Joseph, Missouri

Phone: 816-676-7000

stjoe.lpgmn@ams.usda.gov