

# Daily Direct Steer and Heifer Slaughter Cattle Summary

For Trade on:

Wednesday, August 04, 2021

<a href="#">LM CT100</a>	<b>5-AREA</b>	<a href="#">LM CT109</a>
<b>Neg. Cash Volume:</b>	47,611	<b>Dressed Formula Vol:</b> 28,097
Live Steer Avg:	\$123.31	Steer/Heifer Avg: \$197.40
Live Heifer Avg:	\$123.19	<b>Dressed Neg. Grid Vol:</b> 2,273
Dressed Steer Avg:	\$198.05	Steer/Heifer Avg: \$199.27
Dressed Heifer Avg:	\$198.27	<b>TOTAL VOLUME:</b> 77,981
<a href="#">LM CT106</a>	<b>TOTAL WK TO DATE VOLUME:</b>	<b>190,784</b>
<b>Committed:</b>	<b>103,222</b>	<b>Delivered:</b> 74,082

<a href="#">LM CT118</a>	<b>TX-OK-NM</b>	<a href="#">LM CT109</a>
<b>Neg. Cash Volume:</b>	4,664	<b>Dressed Formula Vol:</b> 11,214
Live Steer Avg:	\$120.65	Steer/Heifer Avg: \$195.13
Live Heifer Avg:	\$121.02	<b>Dressed Neg. Grid Vol:</b> 0
Dressed Steer Avg:	N/A	Steer/Heifer Avg: N/A
Dressed Heifer Avg:	N/A	<b>TOTAL VOLUME:</b> 15,878
<a href="#">LM CT106</a>	<b>TOTAL WK TO DATE VOLUME:</b>	<b>45,898</b>
<b>Committed:</b>	<b>23,302</b>	<b>Delivered:</b> 17,777

<a href="#">LM CT121</a>	<b>KANSAS</b>	<a href="#">LM CT109</a>
<b>Neg. Cash Volume:</b>	8,780	<b>Dressed Formula Vol:</b> 7,423
Live Steer Avg:	\$121.00	Steer/Heifer Avg: \$193.61
Live Heifer Avg:	\$121.00	<b>Dressed Neg. Grid Vol:</b> 177
Dressed Steer Avg:	\$198.00	Steer/Heifer Avg: \$200.84
Dressed Heifer Avg:	N/A	<b>TOTAL VOLUME:</b> 16,380
<a href="#">LM CT106</a>	<b>TOTAL WK TO DATE VOLUME:</b>	<b>58,050</b>
<b>Committed:</b>	<b>24,078</b>	<b>Delivered:</b> 22,335

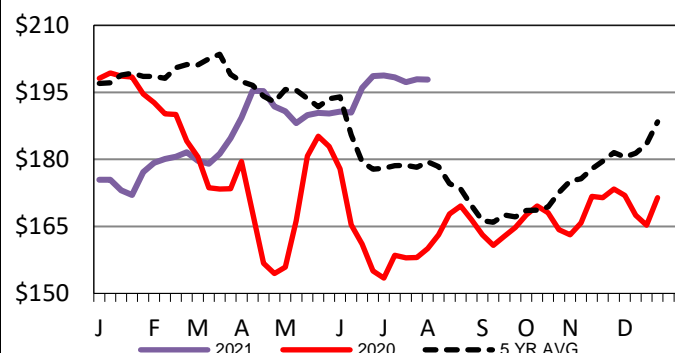
<a href="#">LM CT124</a>	<b>NEBRASKA</b>	<a href="#">LM CT109</a>
<b>Neg. Cash Volume:</b>	19,490	<b>Dressed Formula Vol:</b> 7,386
Live Steer Avg:	\$124.85	Steer/Heifer Avg: \$202.72
Live Heifer Avg:	\$124.90	<b>Dressed Neg. Grid Vol:</b> 1,027
Dressed Steer Avg:	\$197.95	Steer/Heifer Avg: \$198.22
Dressed Heifer Avg:	\$198.54	<b>TOTAL VOLUME:</b> 27,903
<a href="#">LM CT106</a>	<b>TOTAL WK TO DATE VOLUME:</b>	<b>49,095</b>
<b>Committed:</b>	<b>30,211</b>	<b>Delivered:</b> 18,378

<a href="#">LM CT134</a>	<b>COLORADO</b>	<a href="#">LM CT109</a>
<b>Neg. Cash Volume:</b>	0	<b>Dressed Formula Vol:</b> 687
Live Steer Avg:	N/A	Steer/Heifer Avg: \$201.47
Live Heifer Avg:	N/A	<b>Dressed Neg. Grid Vol:</b> 0
Dressed Steer Avg:	N/A	Steer/Heifer Avg: N/A
Dressed Heifer Avg:	N/A	<b>TOTAL VOLUME:</b> 687
<a href="#">LM CT106</a>	<b>TOTAL WK TO DATE VOLUME:</b>	<b>11,331</b>
<b>Committed:</b>	<b>7,153</b>	<b>Delivered:</b> 8,267

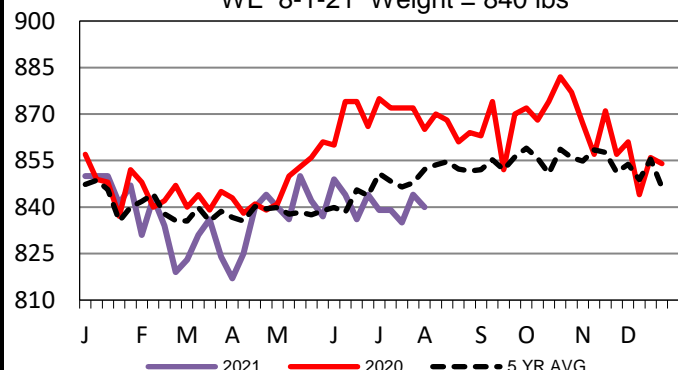
<a href="#">LM CT137</a>	<b>IA-MN</b>	<a href="#">LM CT109</a>
<b>Neg. Cash Volume:</b>	14,677	<b>Dressed Formula Vol:</b> 1,493
Live Steer Avg:	\$125.36	Steer/Heifer Avg: \$205.19
Live Heifer Avg:	\$125.58	<b>Dressed Neg. Grid Vol:</b> 1,123
Dressed Steer Avg:	\$198.28	Steer/Heifer Avg: \$200.37
Dressed Heifer Avg:	\$197.80	<b>TOTAL VOLUME:</b> 17,293
<a href="#">LM CT106</a>	<b>TOTAL WK TO DATE VOLUME:</b>	<b>27,082</b>
<b>Committed:</b>	<b>18,478</b>	<b>Delivered:</b> 7,325

Wednesday cash trading and demand were light to moderate in all major feeding regions. In Texas, compared to last week, live traded 1.00 to 2.00 higher from 121.00-122.00. In Kansas live traded 1.00 higher compared to last week at 121.00. In Nebraska live traded steady to 1.00 higher at 125.00 compared to Tuesday, dressed traded 2.00 higher at 198.00 compared to last week. In the Western Cornbelt live traded steady to 1.00 higher from 125.00-126.00 compared to Tuesday, dressed traded unevenly steady compared to last week at 198.00.

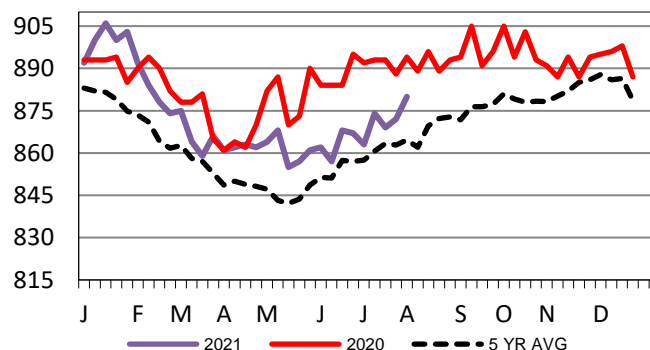
**Iowa-Minnesota Wkly Dress Steer Wtd Avg**  
WE 8-1-21 Price = \$197.84



**TX-OK-NM Formula Carcass Weights**  
WE 8-1-21 Weight = 840 lbs



**Kansas Formula Carcass Weights**  
WE 8-1-21 Weight = 880 lbs



## USDA Livestock, Poultry and Grain Market News

St. Joseph, Missouri

Phone: 816-676-7000

[stjoe.lpgmn@ams.usda.gov](mailto:stjoe.lpgmn@ams.usda.gov)