

Daily Direct Steer and Heifer Slaughter Cattle Summary

For Trade on:

Friday, July 23, 2021

LM CT100	5-AREA	LM CT109
Neg. Cash Volume:	1,962	Dressed Formula Vol: 49,807
Live Steer Avg:	\$122.48	Steer/Heifer Avg: \$197.79
Live Heifer Avg:	\$124.00	Dressed Neg. Grid Vol: 4,357
Dressed Steer Avg:	\$195.00	Steer/Heifer Avg: \$198.64
Dressed Heifer Avg:	\$194.60	TOTAL VOLUME: 56,126
LM CT106	TOTAL WK TO DATE VOLUME:	299,001
Committed:	61,218	Delivered: 113,952

LM CT118	TX-OK-NM	LM CT109
Neg. Cash Volume:	0	Dressed Formula Vol: 8,483
Live Steer Avg:	N/A	Steer/Heifer Avg: \$191.25
Live Heifer Avg:	N/A	Dressed Neg. Grid Vol: 0
Dressed Steer Avg:	N/A	Steer/Heifer Avg: N/A
Dressed Heifer Avg:	N/A	TOTAL VOLUME: 8,483
LM CT106	TOTAL WK TO DATE VOLUME:	69,215
Committed:	21,633	Delivered: 21,448

LM CT121	KANSAS	LM CT109
Neg. Cash Volume:	0	Dressed Formula Vol: 20,219
Live Steer Avg:	N/A	Steer/Heifer Avg: \$194.41
Live Heifer Avg:	N/A	Dressed Neg. Grid Vol: 855
Dressed Steer Avg:	N/A	Steer/Heifer Avg: \$196.91
Dressed Heifer Avg:	N/A	TOTAL VOLUME: 21,074
LM CT106	TOTAL WK TO DATE VOLUME:	98,537
Committed:	18,062	Delivered: 34,920

LM CT124	NEBRASKA	LM CT109
Neg. Cash Volume:	40	Dressed Formula Vol: 8,445
Live Steer Avg:	N/A	Steer/Heifer Avg: \$203.70
Live Heifer Avg:	N/A	Dressed Neg. Grid Vol: 1,659
Dressed Steer Avg:	N/A	Steer/Heifer Avg: \$199.13
Dressed Heifer Avg:	N/A	TOTAL VOLUME: 10,144
LM CT106	TOTAL WK TO DATE VOLUME:	68,059
Committed:	12,539	Delivered: 31,575

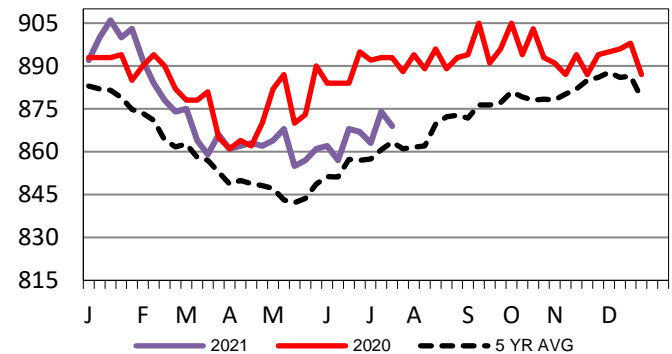
LM CT134	COLORADO	LM CT109
Neg. Cash Volume:	0	Dressed Formula Vol: 9,973
Live Steer Avg:	N/A	Steer/Heifer Avg: \$203.77
Live Heifer Avg:	N/A	Dressed Neg. Grid Vol: 414
Dressed Steer Avg:	N/A	Steer/Heifer Avg: \$197.41
Dressed Heifer Avg:	N/A	TOTAL VOLUME: 10,387
LM CT106	TOTAL WK TO DATE VOLUME:	25,901
Committed:	2,295	Delivered: 10,486

LM CT137	IA-MN	LM CT109
Neg. Cash Volume:	1,922	Dressed Formula Vol: 2,993
Live Steer Avg:	\$122.48	Steer/Heifer Avg: \$203.12
Live Heifer Avg:	\$124.00	Dressed Neg. Grid Vol: 1,467
Dressed Steer Avg:	\$195.00	Steer/Heifer Avg: \$199.62
Dressed Heifer Avg:	\$194.60	TOTAL VOLUME: 6,382
LM CT106	TOTAL WK TO DATE VOLUME:	38,074
Committed:	6,689	Delivered: 15,523

For Friday in the Southern Plains and Nebraska negotiated cash trading was at a standstill. In the Western Cornbelt negotiated cash trading was limited on light demand. Not enough purchases for a market trend. In the Texas Panhandle on Thursday live purchases traded at 119.00. In Kansas on Wednesday live purchases traded at 119.00. In Nebraska on Thursday dressed purchases traded at 195.00 and on Wednesday live purchases traded from 122.00-123.00. In the Western Cornbelt on Thursday live and dressed purchases traded at 124.00 and 195.00, respectively.

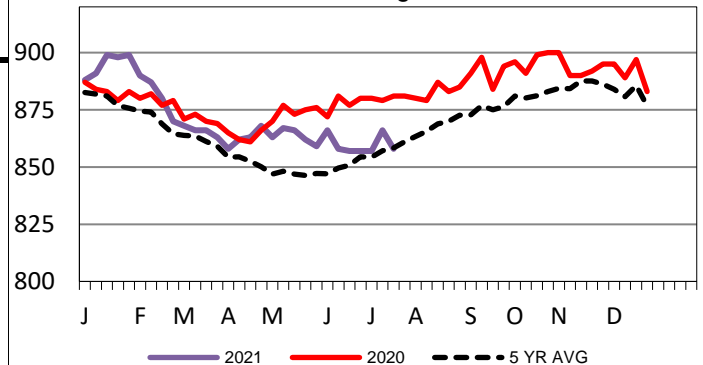
Kansas Formula Carcass Weights

WE 7-18-21 Weight = 869 lbs



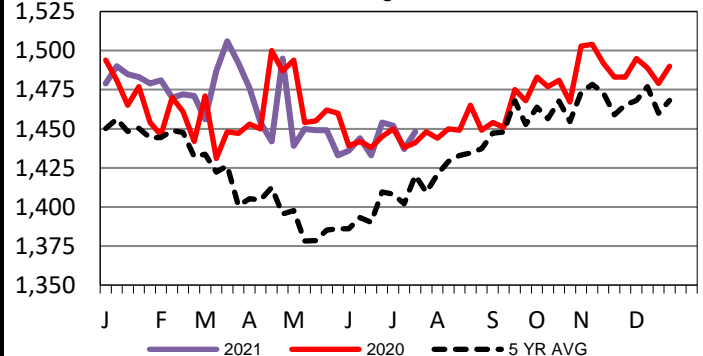
5-Area Formula Carcass Weight

WE 7-18-21 Weight = 858 lbs



5-Area Negotiated Cash Live Steer Weights

WE 7-18-21 Weight = 1448 lbs



USDA Livestock, Poultry and Grain Market News

St. Joseph, Missouri

Phone: 816-676-7000

stjoe.lpgmn@ams.usda.gov