

Daily Direct Steer and Heifer Slaughter Cattle Summary

For Trade on:

Wednesday, July 21, 2021

LM CT100	5-AREA	LM CT109
Neg. Cash Volume:	36,894	Dressed Formula Vol: 32,858
Live Steer Avg:	\$120.17	Steer/Heifer Avg: \$199.73
Live Heifer Avg:	\$119.99	Dressed Neg. Grid Vol: 1,408
Dressed Steer Avg:	\$197.41	Steer/Heifer Avg: \$199.98
Dressed Heifer Avg:	\$195.42	TOTAL VOLUME: 71,160
LM CT106	TOTAL WK TO DATE VOLUME:	186,817
Committed:	85,514	Delivered: 67,521

LM CT118	TX-OK-NM	LM CT109
Neg. Cash Volume:	3,402	Dressed Formula Vol: 10,730
Live Steer Avg:	\$118.79	Steer/Heifer Avg: \$193.68
Live Heifer Avg:	\$119.00	Dressed Neg. Grid Vol: 0
Dressed Steer Avg:	N/A	Steer/Heifer Avg: N/A
Dressed Heifer Avg:	N/A	TOTAL VOLUME: 14,132
LM CT106	TOTAL WK TO DATE VOLUME:	46,174
Committed:	13,631	Delivered: 18,611

LM CT121	KANSAS	LM CT109
Neg. Cash Volume:	11,959	Dressed Formula Vol: 9,031
Live Steer Avg:	\$119.02	Steer/Heifer Avg: \$194.29
Live Heifer Avg:	\$119.00	Dressed Neg. Grid Vol: 0
Dressed Steer Avg:	N/A	Steer/Heifer Avg: N/A
Dressed Heifer Avg:	N/A	TOTAL VOLUME: 20,990
LM CT106	TOTAL WK TO DATE VOLUME:	65,379
Committed:	25,921	Delivered: 18,083

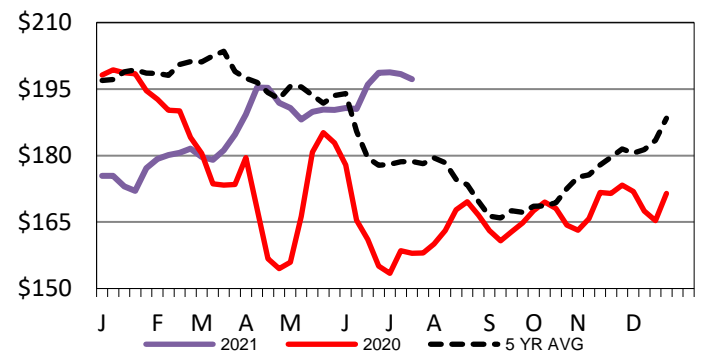
LM CT124	NEBRASKA	LM CT109
Neg. Cash Volume:	11,375	Dressed Formula Vol: 8,872
Live Steer Avg:	\$122.39	Steer/Heifer Avg: \$206.52
Live Heifer Avg:	\$121.19	Dressed Neg. Grid Vol: 577
Dressed Steer Avg:	\$195.40	Steer/Heifer Avg: \$200.89
Dressed Heifer Avg:	\$195.50	TOTAL VOLUME: 20,824
LM CT106	TOTAL WK TO DATE VOLUME:	44,153
Committed:	27,607	Delivered: 16,084

LM CT134	COLORADO	LM CT109
Neg. Cash Volume:	0	Dressed Formula Vol: 3,366
Live Steer Avg:	N/A	Steer/Heifer Avg: \$214.64
Live Heifer Avg:	N/A	Dressed Neg. Grid Vol: 520
Dressed Steer Avg:	N/A	Steer/Heifer Avg: \$198.43
Dressed Heifer Avg:	N/A	TOTAL VOLUME: 3,886
LM CT106	TOTAL WK TO DATE VOLUME:	11,705
Committed:	7,713	Delivered: 7,238

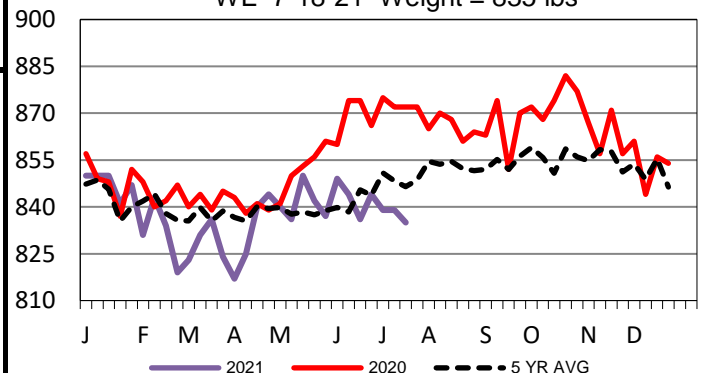
LM CT137	IA-MN	LM CT109
Neg. Cash Volume:	10,158	Dressed Formula Vol: 859
Live Steer Avg:	\$121.34	Steer/Heifer Avg: \$203.94
Live Heifer Avg:	\$123.15	Dressed Neg. Grid Vol: 350
Dressed Steer Avg:	\$198.77	Steer/Heifer Avg: \$201.13
Dressed Heifer Avg:	\$195.00	TOTAL VOLUME: 11,367
LM CT106	TOTAL WK TO DATE VOLUME:	19,509
Committed:	10,642	Delivered: 7,505

Wednesday in the Texas Panhandle cash trading was slow with moderate demand. In Kansas cash trading and demand were moderate. Compared to last week in the Southern Plains live have traded 1.00 lower at 119.00. Wednesday in Nebraska and Western Cornbelt cash trading slow with moderate demand. In Nebraska, compared to last week, live traded 1.00-2.00 lower from 122.00-123.00 and dressed traded 1.00-7.00 lower at 195.00. In the Western Cornbelt, compared to last week, live traded 5.00 lower at 120.00 and dressed traded unevenly steady from 195.00-202.00.

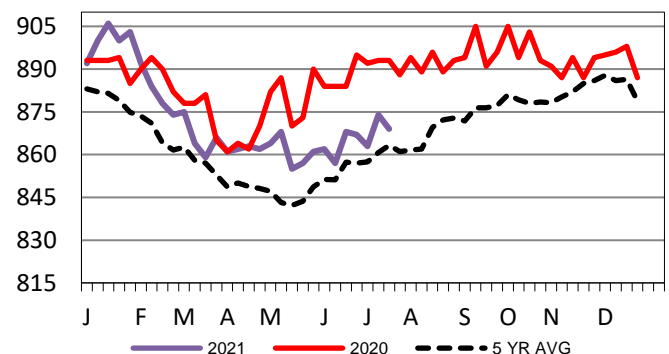
Iowa-Minnesota Wkly Dress Steer Wtd Avg
WE 7-18-21 Price = \$197.25



TX-OK-NM Formula Carcass Weights
WE 7-18-21 Weight = 835 lbs



Kansas Formula Carcass Weights
WE 7-18-21 Weight = 869 lbs



USDA Livestock, Poultry and Grain Market News

St. Joseph, Missouri

Phone: 816-676-7000

stjoe.lpgmn@ams.usda.gov