

## Daily Direct Steer and Heifer Slaughter Cattle Summary

For Trade on:

Wednesday, July 14, 2021

<a href="#">LM CT100</a>	<b>5-AREA</b>	<a href="#">LM CT109</a>
<b>Neg. Cash Volume:</b>	14,396	<b>Dressed Formula Vol:</b> 30,134
Live Steer Avg:	\$124.06	Steer/Heifer Avg: \$200.10
Live Heifer Avg:	\$123.04	<b>Dressed Neg. Grid Vol:</b> 2,203
Dressed Steer Avg:	\$197.09	Steer/Heifer Avg: \$198.79
Dressed Heifer Avg:	\$200.36	<b>TOTAL VOLUME:</b> 46,733
<a href="#">LM CT106</a>	<b>TOTAL WK TO DATE VOLUME:</b>	<b>190,649</b>
<b>Committed:</b>	<b>77,271</b>	<b>Delivered:</b> 68,753

<a href="#">LM CT118</a>	<b>TX-OK-NM</b>	<a href="#">LM CT109</a>
<b>Neg. Cash Volume:</b>	624	<b>Dressed Formula Vol:</b> 9,451
Live Steer Avg:	\$118.66	Steer/Heifer Avg: \$193.63
Live Heifer Avg:	\$117.00	<b>Dressed Neg. Grid Vol:</b> 0
Dressed Steer Avg:	N/A	Steer/Heifer Avg: N/A
Dressed Heifer Avg:	N/A	<b>TOTAL VOLUME:</b> 10,075
<a href="#">LM CT106</a>	<b>TOTAL WK TO DATE VOLUME:</b>	<b>55,215</b>
<b>Committed:</b>	<b>10,907</b>	<b>Delivered:</b> 18,228

<a href="#">LM CT121</a>	<b>KANSAS</b>	<a href="#">LM CT109</a>
<b>Neg. Cash Volume:</b>	525	<b>Dressed Formula Vol:</b> 6,652
Live Steer Avg:	\$120.00	Steer/Heifer Avg: \$194.29
Live Heifer Avg:	N/A	<b>Dressed Neg. Grid Vol:</b> 132
Dressed Steer Avg:	\$196.00	Steer/Heifer Avg: \$194.65
Dressed Heifer Avg:	N/A	<b>TOTAL VOLUME:</b> 7,309
<a href="#">LM CT106</a>	<b>TOTAL WK TO DATE VOLUME:</b>	<b>57,625</b>
<b>Committed:</b>	<b>21,977</b>	<b>Delivered:</b> 19,162

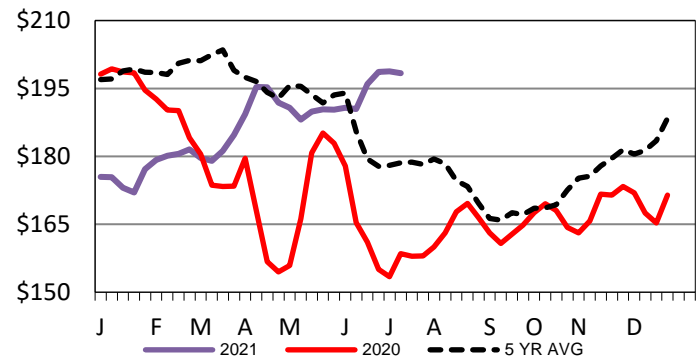
<a href="#">LM CT124</a>	<b>NEBRASKA</b>	<a href="#">LM CT109</a>
<b>Neg. Cash Volume:</b>	5,947	<b>Dressed Formula Vol:</b> 9,172
Live Steer Avg:	\$123.16	Steer/Heifer Avg: \$208.95
Live Heifer Avg:	\$123.12	<b>Dressed Neg. Grid Vol:</b> 1,039
Dressed Steer Avg:	\$197.45	Steer/Heifer Avg: \$198.84
Dressed Heifer Avg:	\$201.00	<b>TOTAL VOLUME:</b> 16,158
<a href="#">LM CT106</a>	<b>TOTAL WK TO DATE VOLUME:</b>	<b>47,851</b>
<b>Committed:</b>	<b>25,990</b>	<b>Delivered:</b> 16,842

<a href="#">LM CT134</a>	<b>COLORADO</b>	<a href="#">LM CT109</a>
<b>Neg. Cash Volume:</b>	0	<b>Dressed Formula Vol:</b> 4,061
Live Steer Avg:	N/A	Steer/Heifer Avg: \$210.26
Live Heifer Avg:	N/A	<b>Dressed Neg. Grid Vol:</b> 0
Dressed Steer Avg:	N/A	Steer/Heifer Avg: N/A
Dressed Heifer Avg:	N/A	<b>TOTAL VOLUME:</b> 4,061
<a href="#">LM CT106</a>	<b>TOTAL WK TO DATE VOLUME:</b>	<b>11,954</b>
<b>Committed:</b>	<b>5,308</b>	<b>Delivered:</b> 6,920

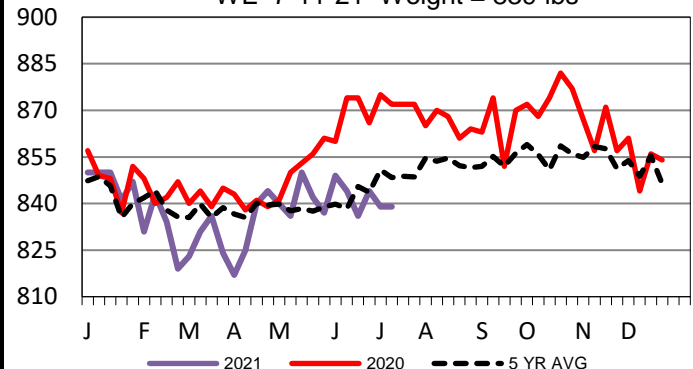
<a href="#">LM CT137</a>	<b>IA-MN</b>	<a href="#">LM CT109</a>
<b>Neg. Cash Volume:</b>	7,300	<b>Dressed Formula Vol:</b> 835
Live Steer Avg:	\$125.20	Steer/Heifer Avg: \$205.47
Live Heifer Avg:	\$124.85	<b>Dressed Neg. Grid Vol:</b> 1,032
Dressed Steer Avg:	\$196.97	Steer/Heifer Avg: \$199.27
Dressed Heifer Avg:	\$197.00	<b>TOTAL VOLUME:</b> 9,167
<a href="#">LM CT106</a>	<b>TOTAL WK TO DATE VOLUME:</b>	<b>18,328</b>
<b>Committed:</b>	<b>13,089</b>	<b>Delivered:</b> 7,601

Wednesday in Nebraska and Western Cornbelt cash trading was slow on moderate demand. In Nebraska, compared to the last reported market on Monday, live traded 2.00 lower at 123.00. Last week dressed traded from 196.00-202.00. In the Western Cornbelt, compared to last week, live traded unevenly steady from 125.00-125.50. Last week dressed traded from 196.00-202.00. Wednesday in the Southern Plains cash trading was mostly inactive with light demand. In the Southern Plains on Tuesday live traded mostly at 120.00.

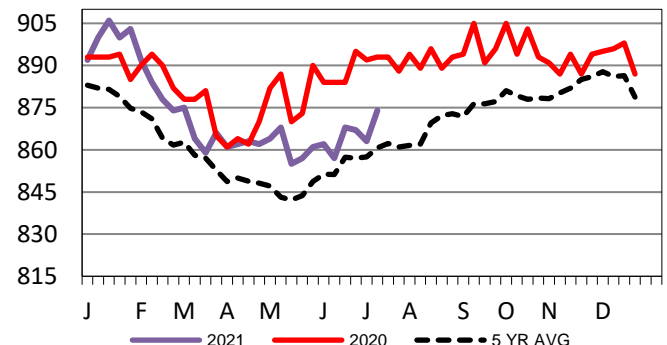
**Iowa-Minnesota Wkly Dress Steer Wtd Avg**  
WE 7-11-21 Price = \$198.35



**TX-OK-NM Formula Carcass Weights**  
WE 7-11-21 Weight = 839 lbs



**Kansas Formula Carcass Weights**  
WE 7-11-21 Weight = 874 lbs



### USDA Livestock, Poultry and Grain Market News

St. Joseph, Missouri

Phone: 816-676-7000

[stjoe.lpgmn@ams.usda.gov](mailto:stjoe.lpgmn@ams.usda.gov)