

## Daily Direct Steer and Heifer Slaughter Cattle Summary

For Trade on:

Tuesday, July 06, 2021

<a href="#">LM CT100</a>	<b>5-AREA</b>	<a href="#">LM CT109</a>
<b>Neg. Cash Volume:</b>	986	<b>Dressed Formula Vol:</b> 59,929
Live Steer Avg:	\$126.00	Steer/Heifer Avg: \$199.05
Live Heifer Avg:	N/A	<b>Dressed Neg. Grid Vol:</b> 5,360
Dressed Steer Avg:	\$200.08	Steer/Heifer Avg: \$197.44
Dressed Heifer Avg:	\$200.00	<b>TOTAL VOLUME:</b> 66,275
<a href="#">LM CT106</a>	<b>TOTAL WK TO DATE VOLUME:</b>	<b>69,454</b>
<b>Committed:</b>	<b>71,254</b>	<b>Delivered:</b> 71,617

<a href="#">LM CT118</a>	<b>TX-OK-NM</b>	<a href="#">LM CT109</a>
<b>Neg. Cash Volume:</b>	0	<b>Dressed Formula Vol:</b> 20,668
Live Steer Avg:	N/A	Steer/Heifer Avg: \$196.80
Live Heifer Avg:	N/A	<b>Dressed Neg. Grid Vol:</b> 246
Dressed Steer Avg:	N/A	Steer/Heifer Avg: \$191.05
Dressed Heifer Avg:	N/A	<b>TOTAL VOLUME:</b> 20,914
<a href="#">LM CT106</a>	<b>TOTAL WK TO DATE VOLUME:</b>	<b>20,914</b>
<b>Committed:</b>	<b>20,892</b>	<b>Delivered:</b> 17,422

<a href="#">LM CT121</a>	<b>KANSAS</b>	<a href="#">LM CT109</a>
<b>Neg. Cash Volume:</b>	0	<b>Dressed Formula Vol:</b> 24,224
Live Steer Avg:	N/A	Steer/Heifer Avg: \$199.22
Live Heifer Avg:	N/A	<b>Dressed Neg. Grid Vol:</b> 1,034
Dressed Steer Avg:	N/A	Steer/Heifer Avg: \$194.48
Dressed Heifer Avg:	N/A	<b>TOTAL VOLUME:</b> 25,258
<a href="#">LM CT106</a>	<b>TOTAL WK TO DATE VOLUME:</b>	<b>25,258</b>
<b>Committed:</b>	<b>30,191</b>	<b>Delivered:</b> 22,606

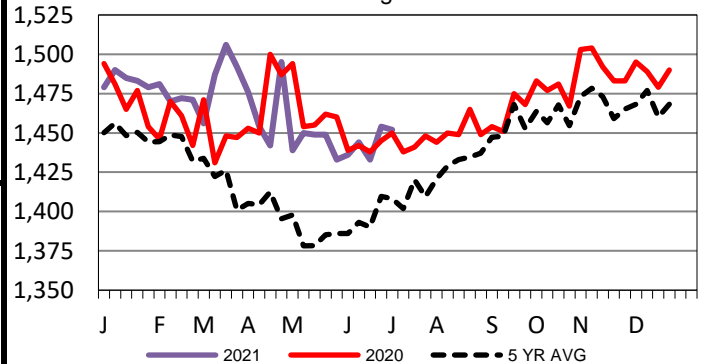
<a href="#">LM CT124</a>	<b>NEBRASKA</b>	<a href="#">LM CT109</a>
<b>Neg. Cash Volume:</b>	211	<b>Dressed Formula Vol:</b> 11,785
Live Steer Avg:	N/A	Steer/Heifer Avg: \$201.93
Live Heifer Avg:	N/A	<b>Dressed Neg. Grid Vol:</b> 2,249
Dressed Steer Avg:	\$201.24	Steer/Heifer Avg: \$198.34
Dressed Heifer Avg:	N/A	<b>TOTAL VOLUME:</b> 14,245
<a href="#">LM CT106</a>	<b>TOTAL WK TO DATE VOLUME:</b>	<b>15,709</b>
<b>Committed:</b>	<b>9,482</b>	<b>Delivered:</b> 17,155

<a href="#">LM CT134</a>	<b>COLORADO</b>	<a href="#">LM CT109</a>
<b>Neg. Cash Volume:</b>	0	<b>Dressed Formula Vol:</b> 2,320
Live Steer Avg:	N/A	Steer/Heifer Avg: \$201.90
Live Heifer Avg:	N/A	<b>Dressed Neg. Grid Vol:</b> 284
Dressed Steer Avg:	N/A	Steer/Heifer Avg: \$201.01
Dressed Heifer Avg:	N/A	<b>TOTAL VOLUME:</b> 2,604
<a href="#">LM CT106</a>	<b>TOTAL WK TO DATE VOLUME:</b>	<b>4,087</b>
<b>Committed:</b>	<b>4,590</b>	<b>Delivered:</b> 7,997

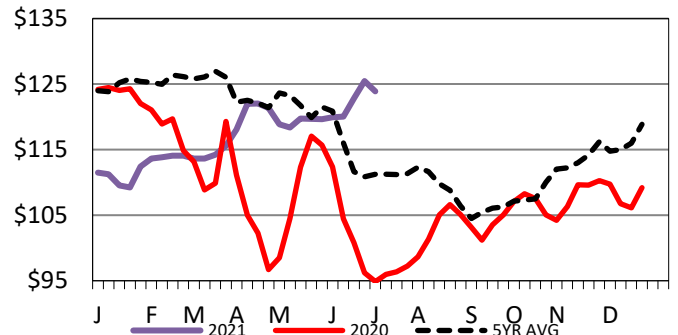
<a href="#">LM CT137</a>	<b>IA-MN</b>	<a href="#">LM CT109</a>
<b>Neg. Cash Volume:</b>	775	<b>Dressed Formula Vol:</b> 1,120
Live Steer Avg:	\$126.00	Steer/Heifer Avg: \$200.35
Live Heifer Avg:	N/A	<b>Dressed Neg. Grid Vol:</b> 1,662
Dressed Steer Avg:	\$199.27	Steer/Heifer Avg: \$198.71
Dressed Heifer Avg:	\$200.00	<b>TOTAL VOLUME:</b> 3,557
<a href="#">LM CT106</a>	<b>TOTAL WK TO DATE VOLUME:</b>	<b>3,789</b>
<b>Committed:</b>	<b>6,099</b>	<b>Delivered:</b> 6,437

For Tuesday negotiated cash trading in Nebraska and Western Cornbelt was mostly inactive on light demand. Not enough purchases for a market trend. In the Southern Plains negotiated cash trading was at a standstill. Last week in the Southern Plains live purchases traded from 120.00-122.00. For the prior week in Nebraska live and dressed purchases traded from 125.00-126.50 and at 198.00, respectively. For the previous week in the Western Cornbelt live and dressed purchases traded from 124.00-126.00 and from 197.00-202.00, respectively.

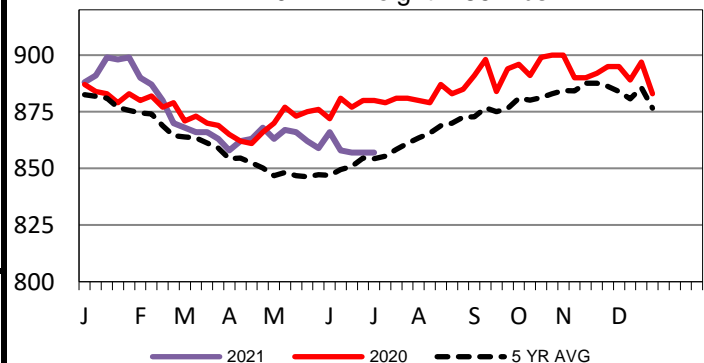
**5-Area Negotiated Cash Live Steer Weights**  
WE 7-04-21 Weight = 1452 lbs



**5-Area Live Steer Weighted Average**  
WE 7-04-21 Price = \$123.89



**5-Area Formula Carcass Weight**  
WE 7-04-21 Weight = 857 lbs



## USDA Livestock, Poultry and Grain Market News

St. Joseph, Missouri

Phone: 816-676-7000

[stjoe.lpgmn@ams.usda.gov](mailto:stjoe.lpgmn@ams.usda.gov)