

## Daily Direct Steer and Heifer Slaughter Cattle Summary

For Trade on:

Friday, July 02, 2021

<a href="#">LM CT100</a>	<b>5-AREA</b>	<a href="#">LM CT109</a>
<b>Neg. Cash Volume:</b>	4,159	<b>Dressed Formula Vol:</b> 40,392
Live Steer Avg:	\$124.95	Steer/Heifer Avg: \$200.75
Live Heifer Avg:	\$125.08	<b>Dressed Neg. Grid Vol:</b> 2,741
Dressed Steer Avg:	\$201.14	Steer/Heifer Avg: \$198.13
Dressed Heifer Avg:	\$196.87	<b>TOTAL VOLUME:</b> 47,292
<a href="#">LM CT106</a>	<b>TOTAL WK TO DATE VOLUME:</b>	<b>292,003</b>
<b>Committed:</b>	<b>63,640</b>	<b>Delivered:</b> 96,453

<a href="#">LM CT118</a>	<b>TX-OK-NM</b>	<a href="#">LM CT109</a>
<b>Neg. Cash Volume:</b>	0	<b>Dressed Formula Vol:</b> 6,718
Live Steer Avg:	N/A	Steer/Heifer Avg: \$195.05
Live Heifer Avg:	N/A	<b>Dressed Neg. Grid Vol:</b> 0
Dressed Steer Avg:	N/A	Steer/Heifer Avg: N/A
Dressed Heifer Avg:	N/A	<b>TOTAL VOLUME:</b> 6,718
<a href="#">LM CT106</a>	<b>TOTAL WK TO DATE VOLUME:</b>	<b>69,473</b>
<b>Committed:</b>	<b>24,531</b>	<b>Delivered:</b> 24,391

<a href="#">LM CT121</a>	<b>KANSAS</b>	<a href="#">LM CT109</a>
<b>Neg. Cash Volume:</b>	146	<b>Dressed Formula Vol:</b> 21,164
Live Steer Avg:	\$124.00	Steer/Heifer Avg: \$201.13
Live Heifer Avg:	N/A	<b>Dressed Neg. Grid Vol:</b> 432
Dressed Steer Avg:	N/A	Steer/Heifer Avg: \$200.92
Dressed Heifer Avg:	N/A	<b>TOTAL VOLUME:</b> 21,742
<a href="#">LM CT106</a>	<b>TOTAL WK TO DATE VOLUME:</b>	<b>92,759</b>
<b>Committed:</b>	<b>10,823</b>	<b>Delivered:</b> 26,830

<a href="#">LM CT124</a>	<b>NEBRASKA</b>	<a href="#">LM CT109</a>
<b>Neg. Cash Volume:</b>	1,496	<b>Dressed Formula Vol:</b> 7,121
Live Steer Avg:	\$125.56	Steer/Heifer Avg: \$201.68
Live Heifer Avg:	\$126.00	<b>Dressed Neg. Grid Vol:</b> 711
Dressed Steer Avg:	N/A	Steer/Heifer Avg: \$200.30
Dressed Heifer Avg:	N/A	<b>TOTAL VOLUME:</b> 9,328
<a href="#">LM CT106</a>	<b>TOTAL WK TO DATE VOLUME:</b>	<b>70,473</b>
<b>Committed:</b>	<b>8,239</b>	<b>Delivered:</b> 22,693

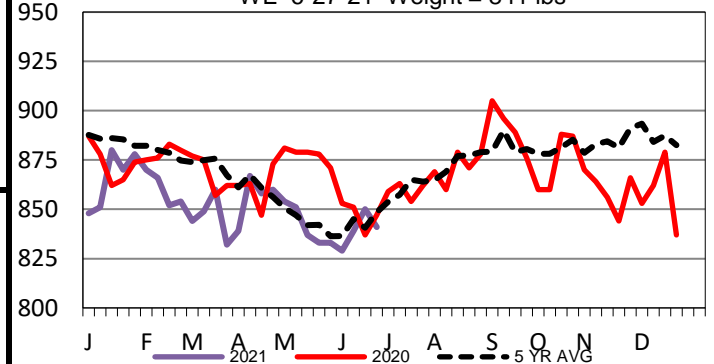
<a href="#">LM CT134</a>	<b>COLORADO</b>	<a href="#">LM CT109</a>
<b>Neg. Cash Volume:</b>	0	<b>Dressed Formula Vol:</b> 3,260
Live Steer Avg:	N/A	Steer/Heifer Avg: \$208.25
Live Heifer Avg:	N/A	<b>Dressed Neg. Grid Vol:</b> 210
Dressed Steer Avg:	N/A	Steer/Heifer Avg: \$198.99
Dressed Heifer Avg:	N/A	<b>TOTAL VOLUME:</b> 3,470
<a href="#">LM CT106</a>	<b>TOTAL WK TO DATE VOLUME:</b>	<b>15,862</b>
<b>Committed:</b>	<b>8,663</b>	<b>Delivered:</b> 6,151

<a href="#">LM CT137</a>	<b>IA-MN</b>	<a href="#">LM CT109</a>
<b>Neg. Cash Volume:</b>	2,517	<b>Dressed Formula Vol:</b> 2,282
Live Steer Avg:	\$124.39	Steer/Heifer Avg: \$200.93
Live Heifer Avg:	\$124.71	<b>Dressed Neg. Grid Vol:</b> 1,505
Dressed Steer Avg:	\$201.14	Steer/Heifer Avg: \$196.57
Dressed Heifer Avg:	\$196.87	<b>TOTAL VOLUME:</b> 6,304
<a href="#">LM CT106</a>	<b>TOTAL WK TO DATE VOLUME:</b>	<b>44,653</b>
<b>Committed:</b>	<b>11,384</b>	<b>Delivered:</b> 16,388

Friday cash trading was limited on light demand in Kansas, Nebraska, and the Western Cornbelt. Negotiated cash trading in the Texas Panhandle was at a standstill. In Kansas on Wednesday, live purchases traded from 120.00-122.00. In the Texas Panhandle on Tuesday, live purchases traded from 121.25-122.00. On Wednesday in Nebraska live and dressed purchases traded from 125.00-126.00 and at 198.00, respectively. In the Western Cornbelt on Wednesday, live and dressed purchases traded from 124.00-126.00 and from 197.00-198.00, respectively

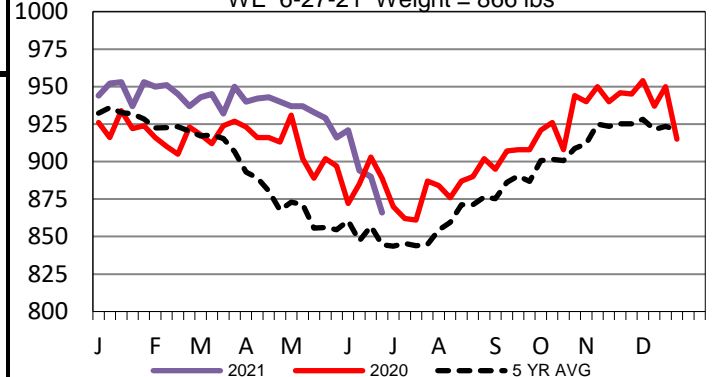
## Colorado Formula Carcass Weights

WE 6-27-21 Weight = 841 lbs



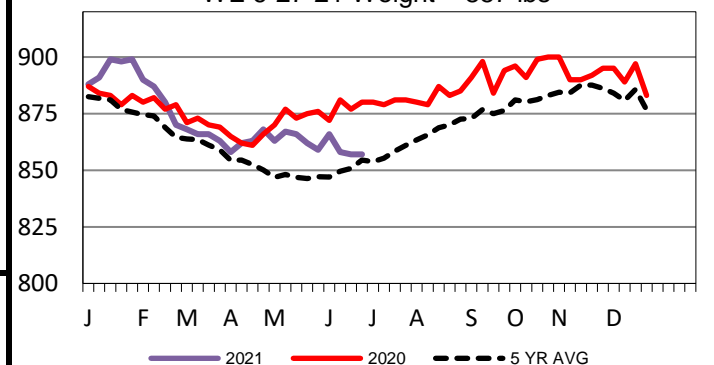
## Iowa-Minnesota Formula Carcass Weights

WE 6-27-21 Weight = 866 lbs



## 5-Area Formula Carcass Weight

WE 6-27-21 Weight = 857 lbs



## USDA Livestock, Poultry and Grain Market News

St. Joseph, Missouri

Phone: 816-676-7000

[stjoe.lpgmn@ams.usda.gov](mailto:stjoe.lpgmn@ams.usda.gov)