

Daily Direct Steer and Heifer Slaughter Cattle Summary

For Trade on:

Tuesday, June 29, 2021

LM CT100	5-AREA	LM CT109
Neg. Cash Volume:	4,268	Dressed Formula Vol: 35,152
Live Steer Avg:	\$121.84	Steer/Heifer Avg: \$202.13
Live Heifer Avg:	\$121.59	Dressed Neg. Grid Vol: 4,941
Dressed Steer Avg:	\$198.92	Steer/Heifer Avg: \$197.08
Dressed Heifer Avg:	N/A	TOTAL VOLUME: 44,361
LM CT106	TOTAL WK TO DATE VOLUME:	117,516
Committed:	56,225	Delivered: 66,498

LM CT118	TX-OK-NM	LM CT109
Neg. Cash Volume:	2,696	Dressed Formula Vol: 11,352
Live Steer Avg:	\$121.79	Steer/Heifer Avg: \$199.98
Live Heifer Avg:	\$121.50	Dressed Neg. Grid Vol: 0
Dressed Steer Avg:	N/A	Steer/Heifer Avg: N/A
Dressed Heifer Avg:	N/A	TOTAL VOLUME: 14,048
LM CT106	TOTAL WK TO DATE VOLUME:	36,598
Committed:	11,798	Delivered: 18,457

LM CT121	KANSAS	LM CT109
Neg. Cash Volume:	644	Dressed Formula Vol: 13,787
Live Steer Avg:	\$120.58	Steer/Heifer Avg: \$198.92
Live Heifer Avg:	\$122.00	Dressed Neg. Grid Vol: 124
Dressed Steer Avg:	\$193.00	Steer/Heifer Avg: \$199.87
Dressed Heifer Avg:	N/A	TOTAL VOLUME: 14,555
LM CT106	TOTAL WK TO DATE VOLUME:	40,668
Committed:	22,485	Delivered: 19,297

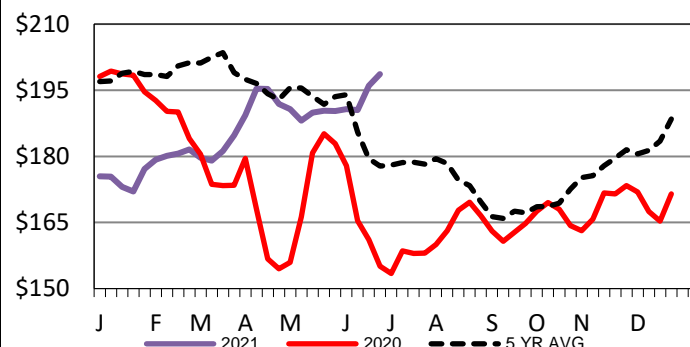
LM CT124	NEBRASKA	LM CT109
Neg. Cash Volume:	136	Dressed Formula Vol: 4,646
Live Steer Avg:	N/A	Steer/Heifer Avg: \$211.01
Live Heifer Avg:	N/A	Dressed Neg. Grid Vol: 2,597
Dressed Steer Avg:	N/A	Steer/Heifer Avg: \$196.65
Dressed Heifer Avg:	N/A	TOTAL VOLUME: 7,379
LM CT106	TOTAL WK TO DATE VOLUME:	24,873
Committed:	12,564	Delivered: 15,583

LM CT134	COLORADO	LM CT109
Neg. Cash Volume:	0	Dressed Formula Vol: 4,149
Live Steer Avg:	N/A	Steer/Heifer Avg: \$209.23
Live Heifer Avg:	N/A	Dressed Neg. Grid Vol: 456
Dressed Steer Avg:	N/A	Steer/Heifer Avg: \$198.33
Dressed Heifer Avg:	N/A	TOTAL VOLUME: 4,605
LM CT106	TOTAL WK TO DATE VOLUME:	7,674
Committed:	3,563	Delivered: 4,617

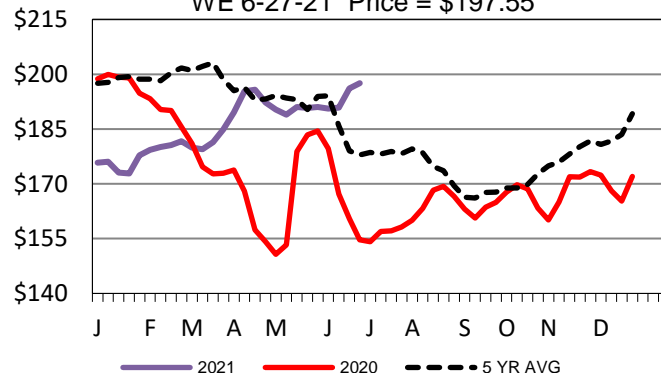
LM CT137	IA-MN	LM CT109
Neg. Cash Volume:	792	Dressed Formula Vol: 1,362
Live Steer Avg:	\$125.31	Steer/Heifer Avg: \$200.04
Live Heifer Avg:	N/A	Dressed Neg. Grid Vol: 1,764
Dressed Steer Avg:	\$199.60	Steer/Heifer Avg: \$197.19
Dressed Heifer Avg:	N/A	TOTAL VOLUME: 3,918
LM CT106	TOTAL WK TO DATE VOLUME:	8,191
Committed:	5,815	Delivered: 8,544

Tuesday cash trading in the Texas Panhandle was limited on light demand. Compared to the latest reported market two weeks ago, live traded steady to 0.75 lower from 121.25-122.00. Cash trading was mostly inactive on light demand in Kansas and the Western Cornbelt. Cash trading was at a standstill in Nebraska. On Monday in Nebraska live traded at 126.50, and last week dressed traded at 197.00. Last week in the Western Cornbelt live traded from 125.00-126.00 and dressed traded at 197.00. In Kansas two weeks ago with live purchases at 122.00.

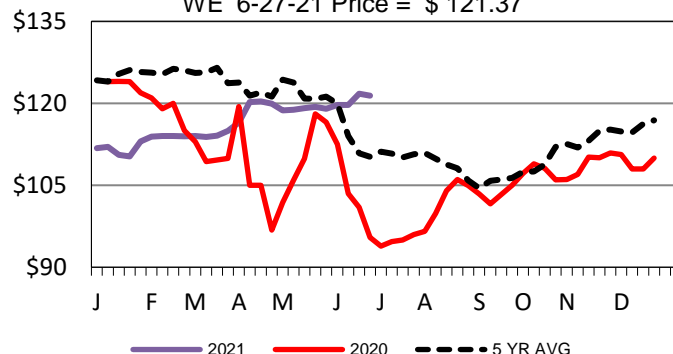
Iowa-Minnesota Wkly Dress Steer Wtd Avg
WE 6-27-21 Price = \$198.65



Nebraska Weekly Dressed Steer Weighted Avg
WE 6-27-21 Price = \$197.55



TX-OK-NM Wkly Live Steer Wtd Avg
WE 6-27-21 Price = \$121.37



USDA Livestock, Poultry and Grain Market News

St. Joseph, Missouri

Phone: 816-676-7000

stjoe.lpgmn@ams.usda.gov