

## Daily Direct Steer and Heifer Slaughter Cattle Summary

For Trade on:

Monday, June 28, 2021

<a href="#">LM CT100</a>	<b>5-AREA</b>	<a href="#">LM CT109</a>
<b>Neg. Cash Volume:</b>	7,142	<b>Dressed Formula Vol:</b> 58,445
Live Steer Avg:	\$124.98	Steer/Heifer Avg: \$198.29
Live Heifer Avg:	\$126.50	<b>Dressed Neg. Grid Vol:</b> 7,568
Dressed Steer Avg:	\$201.74	Steer/Heifer Avg: \$196.65
Dressed Heifer Avg:	N/A	<b>TOTAL VOLUME:</b> 73,155
<a href="#">LM CT106</a>	<b>TOTAL WK TO DATE VOLUME:</b>	<b>73,155</b>
<b>Committed:</b>	<b>80,358</b>	<b>Delivered:</b> 73,916

<a href="#">LM CT118</a>	<b>TX-OK-NM</b>	<a href="#">LM CT109</a>
<b>Neg. Cash Volume:</b>	0	<b>Dressed Formula Vol:</b> 22,135
Live Steer Avg:	N/A	Steer/Heifer Avg: \$197.30
Live Heifer Avg:	N/A	<b>Dressed Neg. Grid Vol:</b> 415
Dressed Steer Avg:	N/A	Steer/Heifer Avg: \$197.49
Dressed Heifer Avg:	N/A	<b>TOTAL VOLUME:</b> 22,550
<a href="#">LM CT106</a>	<b>TOTAL WK TO DATE VOLUME:</b>	<b>22,550</b>
<b>Committed:</b>	<b>33,304</b>	<b>Delivered:</b> 18,638

<a href="#">LM CT121</a>	<b>KANSAS</b>	<a href="#">LM CT109</a>
<b>Neg. Cash Volume:</b>	900	<b>Dressed Formula Vol:</b> 24,010
Live Steer Avg:	\$122.00	Steer/Heifer Avg: \$197.80
Live Heifer Avg:	N/A	<b>Dressed Neg. Grid Vol:</b> 1,203
Dressed Steer Avg:	N/A	Steer/Heifer Avg: \$196.10
Dressed Heifer Avg:	N/A	<b>TOTAL VOLUME:</b> 26,113
<a href="#">LM CT106</a>	<b>TOTAL WK TO DATE VOLUME:</b>	<b>26,113</b>
<b>Committed:</b>	<b>15,457</b>	<b>Delivered:</b> 19,585

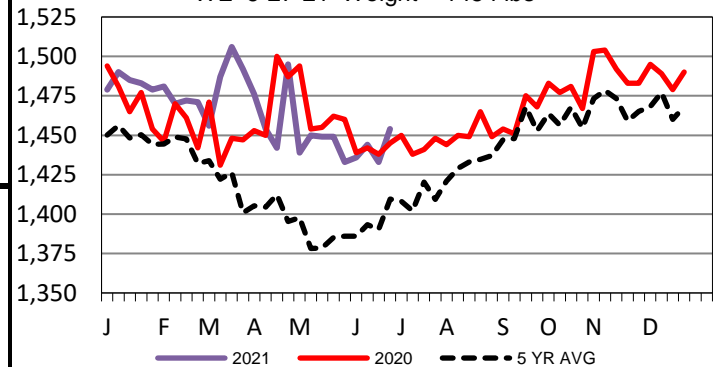
<a href="#">LM CT124</a>	<b>NEBRASKA</b>	<a href="#">LM CT109</a>
<b>Neg. Cash Volume:</b>	5,303	<b>Dressed Formula Vol:</b> 8,113
Live Steer Avg:	\$125.63	Steer/Heifer Avg: \$201.22
Live Heifer Avg:	\$126.50	<b>Dressed Neg. Grid Vol:</b> 4,078
Dressed Steer Avg:	\$197.00	Steer/Heifer Avg: \$196.45
Dressed Heifer Avg:	N/A	<b>TOTAL VOLUME:</b> 17,494
<a href="#">LM CT106</a>	<b>TOTAL WK TO DATE VOLUME:</b>	<b>17,494</b>
<b>Committed:</b>	<b>11,189</b>	<b>Delivered:</b> 18,316

<a href="#">LM CT134</a>	<b>COLORADO</b>	<a href="#">LM CT109</a>
<b>Neg. Cash Volume:</b>	0	<b>Dressed Formula Vol:</b> 2,896
Live Steer Avg:	N/A	Steer/Heifer Avg: \$197.70
Live Heifer Avg:	N/A	<b>Dressed Neg. Grid Vol:</b> 173
Dressed Steer Avg:	N/A	Steer/Heifer Avg: \$204.07
Dressed Heifer Avg:	N/A	<b>TOTAL VOLUME:</b> 3,069
<a href="#">LM CT106</a>	<b>TOTAL WK TO DATE VOLUME:</b>	<b>3,069</b>
<b>Committed:</b>	<b>13,292</b>	<b>Delivered:</b> 8,384

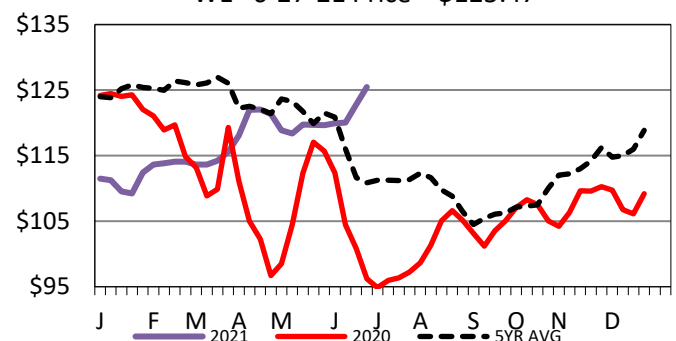
<a href="#">LM CT137</a>	<b>IA-MN</b>	<a href="#">LM CT109</a>
<b>Neg. Cash Volume:</b>	939	<b>Dressed Formula Vol:</b> 1,554
Live Steer Avg:	N/A	Steer/Heifer Avg: \$207.46
Live Heifer Avg:	N/A	<b>Dressed Neg. Grid Vol:</b> 1,780
Dressed Steer Avg:	\$202.00	Steer/Heifer Avg: \$196.62
Dressed Heifer Avg:	\$202.00	<b>TOTAL VOLUME:</b> 4,273
<a href="#">LM CT106</a>	<b>TOTAL WK TO DATE VOLUME:</b>	<b>4,273</b>
<b>Committed:</b>	<b>7,116</b>	<b>Delivered:</b> 8,993

Monday cash trading was slow on light demand in Nebraska. Compared to last week, early live traded steady to 1.50 higher at 126.50. Last week in Nebraska dressed traded at 197.00. Cash trading in the Western Cornbelt and Kansas was mostly inactive on very light demand. Cash trading in the Texas Panhandle was at a standstill. Last week in the Western Cornbelt live traded from 125.00-126.00 and dressed traded at 197.00. The latest reported market in the Southern Plains was two weeks ago with live purchases at 122.00.

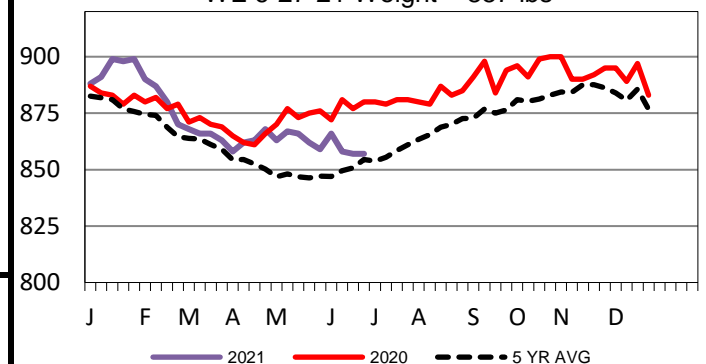
**5-Area Negotiated Cash Live Steer Weights**  
WE 6-27-21 Weight = 1454 lbs



**5-Area Live Steer Weighted Average**  
WE 6-27-21 Price = \$125.47



**5-Area Formula Carcass Weight**  
WE 6-27-21 Weight = 857 lbs



## USDA Livestock, Poultry and Grain Market News

St. Joseph, Missouri

Phone: 816-676-7000

[stjoe.lpgmn@ams.usda.gov](mailto:stjoe.lpgmn@ams.usda.gov)