

Daily Direct Steer and Heifer Slaughter Cattle Summary

For Trade on:

Wednesday, June 23, 2021

LM CT100	5-AREA	LM CT109
Neg. Cash Volume:	12,403	Dressed Formula Vol: 33,903
Live Steer Avg:	\$125.65	Steer/Heifer Avg: \$198.71
Live Heifer Avg:	\$125.55	Dressed Neg. Grid Vol: 3,591
Dressed Steer Avg:	\$197.34	Steer/Heifer Avg: \$194.85
Dressed Heifer Avg:	\$197.50	TOTAL VOLUME: 49,897
LM CT106	TOTAL WK TO DATE VOLUME:	161,046
Committed:	62,079	Delivered: 63,656

LM CT118	TX-OK-NM	LM CT109
Neg. Cash Volume:	428	Dressed Formula Vol: 13,948
Live Steer Avg:	\$122.00	Steer/Heifer Avg: \$195.18
Live Heifer Avg:	N/A	Dressed Neg. Grid Vol: 0
Dressed Steer Avg:	N/A	Steer/Heifer Avg: N/A
Dressed Heifer Avg:	N/A	TOTAL VOLUME: 14,376
LM CT106	TOTAL WK TO DATE VOLUME:	42,978
Committed:	9,233	Delivered: 19,596

LM CT121	KANSAS	LM CT109
Neg. Cash Volume:	309	Dressed Formula Vol: 7,634
Live Steer Avg:	N/A	Steer/Heifer Avg: \$199.53
Live Heifer Avg:	N/A	Dressed Neg. Grid Vol: 112
Dressed Steer Avg:	\$197.00	Steer/Heifer Avg: \$194.85
Dressed Heifer Avg:	N/A	TOTAL VOLUME: 8,055
LM CT106	TOTAL WK TO DATE VOLUME:	46,191
Committed:	8,173	Delivered: 15,125

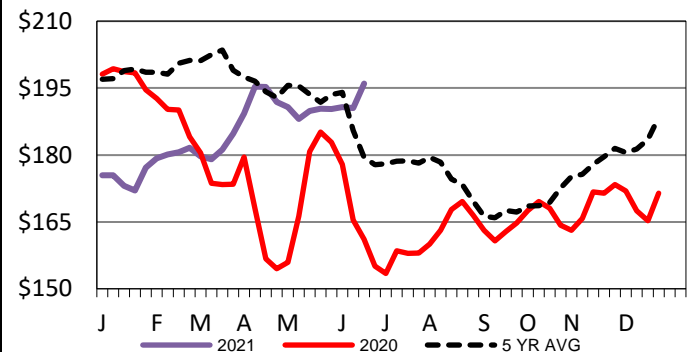
LM CT124	NEBRASKA	LM CT109
Neg. Cash Volume:	7,090	Dressed Formula Vol: 8,036
Live Steer Avg:	\$125.83	Steer/Heifer Avg: \$200.15
Live Heifer Avg:	\$126.00	Dressed Neg. Grid Vol: 2,784
Dressed Steer Avg:	\$197.32	Steer/Heifer Avg: \$194.97
Dressed Heifer Avg:	\$198.57	TOTAL VOLUME: 17,910
LM CT106	TOTAL WK TO DATE VOLUME:	43,848
Committed:	30,787	Delivered: 16,804

LM CT134	COLORADO	LM CT109
Neg. Cash Volume:	0	Dressed Formula Vol: 3,260
Live Steer Avg:	N/A	Steer/Heifer Avg: \$210.03
Live Heifer Avg:	N/A	Dressed Neg. Grid Vol: 160
Dressed Steer Avg:	N/A	Steer/Heifer Avg: \$193.43
Dressed Heifer Avg:	N/A	TOTAL VOLUME: 3,420
LM CT106	TOTAL WK TO DATE VOLUME:	9,924
Committed:	8,838	Delivered: 4,779

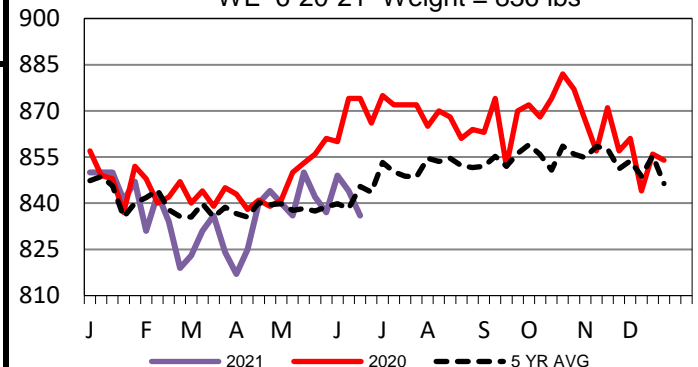
LM CT137	IA-MN	LM CT109
Neg. Cash Volume:	4,576	Dressed Formula Vol: 1,140
Live Steer Avg:	\$125.58	Steer/Heifer Avg: \$194.81
Live Heifer Avg:	\$124.85	Dressed Neg. Grid Vol: 651
Dressed Steer Avg:	\$197.55	Steer/Heifer Avg: \$195.19
Dressed Heifer Avg:	\$197.00	TOTAL VOLUME: 6,367
LM CT106	TOTAL WK TO DATE VOLUME:	18,581
Committed:	5,048	Delivered: 7,352

Wednesday in Nebraska and Western Cornbelt negotiated cash trading was slow on moderate demand. In Nebraska and Western Cornbelt a few live and dressed traded at 126.00 and 197.00, respectively. Wednesday in the Southern Plains negotiated cash trading was mostly inactive on light demand. Not enough purchases in any price range in any region for a full market trend. For the prior week in Nebraska and Western Cornbelt live and dressed traded at 124.00 and 195.00, respectively. Last week in the Southern Plains live traded at 122.00.

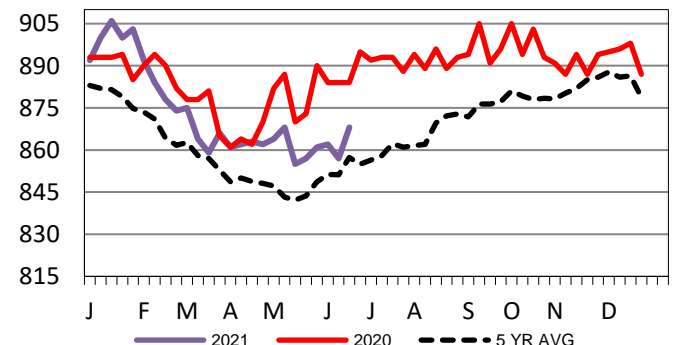
Iowa-Minnesota Wkly Dress Steer Wtd
Avg WE 6-20-21 Price = \$196.00



TX-OK-NM Formula Carcass Weights
WE 6-20-21 Weight = 836 lbs



Kansas Formula Carcass Weights
WE 6-20-21 Weight = 868 lbs



USDA Livestock, Poultry and Grain Market News

St. Joseph, Missouri

Phone: 816-676-7000

stjoe.lpgmn@ams.usda.gov