

## Daily Direct Steer and Heifer Slaughter Cattle Summary

For Trade on:

Friday, June 18, 2021

<a href="#">LM CT100</a>	<b>5-AREA</b>	<a href="#">LM CT109</a>
<b>Neg. Cash Volume:</b>	2,325	<b>Dressed Formula Vol:</b> 37,047
Live Steer Avg:	\$122.24	Steer/Heifer Avg: \$193.23
Live Heifer Avg:	\$122.00	<b>Dressed Neg. Grid Vol:</b> 3,117
Dressed Steer Avg:	\$200.00	Steer/Heifer Avg: \$195.71
Dressed Heifer Avg:	\$200.00	<b>TOTAL VOLUME:</b> 42,489
<a href="#">LM CT106</a>	<b>TOTAL WK TO DATE VOLUME:</b>	<b>286,527</b>
<b>Committed:</b>	<b>57,551</b>	<b>Delivered:</b> 107,398

<a href="#">LM CT118</a>	<b>TX-OK-NM</b>	<a href="#">LM CT109</a>
<b>Neg. Cash Volume:</b>	318	<b>Dressed Formula Vol:</b> 8,709
Live Steer Avg:	\$120.00	Steer/Heifer Avg: \$190.22
Live Heifer Avg:	\$122.00	<b>Dressed Neg. Grid Vol:</b> 0
Dressed Steer Avg:	N/A	Steer/Heifer Avg: N/A
Dressed Heifer Avg:	N/A	<b>TOTAL VOLUME:</b> 9,027
<a href="#">LM CT106</a>	<b>TOTAL WK TO DATE VOLUME:</b>	<b>77,082</b>
<b>Committed:</b>	<b>8,424</b>	<b>Delivered:</b> 28,221

<a href="#">LM CT121</a>	<b>KANSAS</b>	<a href="#">LM CT109</a>
<b>Neg. Cash Volume:</b>	65	<b>Dressed Formula Vol:</b> 16,740
Live Steer Avg:	N/A	Steer/Heifer Avg: \$193.93
Live Heifer Avg:	N/A	<b>Dressed Neg. Grid Vol:</b> 0
Dressed Steer Avg:	N/A	Steer/Heifer Avg: N/A
Dressed Heifer Avg:	N/A	<b>TOTAL VOLUME:</b> 16,805
<a href="#">LM CT106</a>	<b>TOTAL WK TO DATE VOLUME:</b>	<b>104,835</b>
<b>Committed:</b>	<b>15,907</b>	<b>Delivered:</b> 30,991

<a href="#">LM CT124</a>	<b>NEBRASKA</b>	<a href="#">LM CT109</a>
<b>Neg. Cash Volume:</b>	420	<b>Dressed Formula Vol:</b> 8,036
Live Steer Avg:	\$124.00	Steer/Heifer Avg: \$194.30
Live Heifer Avg:	N/A	<b>Dressed Neg. Grid Vol:</b> 2,178
Dressed Steer Avg:	N/A	Steer/Heifer Avg: \$196.47
Dressed Heifer Avg:	N/A	<b>TOTAL VOLUME:</b> 10,634
<a href="#">LM CT106</a>	<b>TOTAL WK TO DATE VOLUME:</b>	<b>67,433</b>
<b>Committed:</b>	<b>14,766</b>	<b>Delivered:</b> 27,825

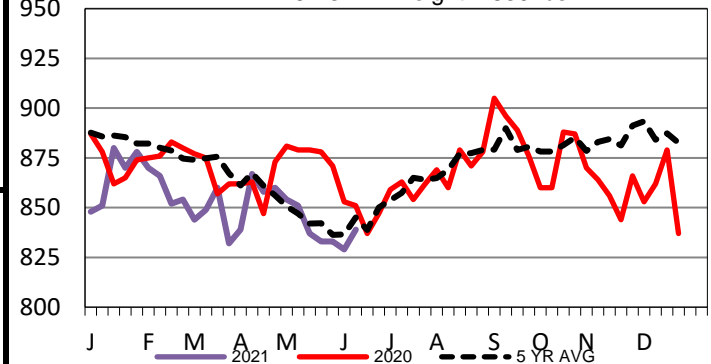
<a href="#">LM CT134</a>	<b>COLORADO</b>	<a href="#">LM CT109</a>
<b>Neg. Cash Volume:</b>	0	<b>Dressed Formula Vol:</b> 1,624
Live Steer Avg:	N/A	Steer/Heifer Avg: \$194.80
Live Heifer Avg:	N/A	<b>Dressed Neg. Grid Vol:</b> 212
Dressed Steer Avg:	N/A	Steer/Heifer Avg: \$198.60
Dressed Heifer Avg:	N/A	<b>TOTAL VOLUME:</b> 1,836
<a href="#">LM CT106</a>	<b>TOTAL WK TO DATE VOLUME:</b>	<b>17,103</b>
<b>Committed:</b>	<b>10,444</b>	<b>Delivered:</b> 6,060

<a href="#">LM CT137</a>	<b>IA-MN</b>	<a href="#">LM CT109</a>
<b>Neg. Cash Volume:</b>	1,522	<b>Dressed Formula Vol:</b> 2,053
Live Steer Avg:	\$123.28	Steer/Heifer Avg: \$194.91
Live Heifer Avg:	N/A	<b>Dressed Neg. Grid Vol:</b> 727
Dressed Steer Avg:	\$200.00	Steer/Heifer Avg: \$192.58
Dressed Heifer Avg:	\$200.00	<b>TOTAL VOLUME:</b> 4,302
<a href="#">LM CT106</a>	<b>TOTAL WK TO DATE VOLUME:</b>	<b>31,059</b>
<b>Committed:</b>	<b>8,010</b>	<b>Delivered:</b> 14,301

For Friday negotiated cash trading was limited on light demand in all major feeding regions. Not enough purchases for a full market trend. Tuesday was the last reported market in the Southern Plains, with live purchases at 122.00. In Nebraska on Tuesday and the Western Cornbelt on Wednesday, live purchases traded at 124.00 and dressed purchases traded at 195.00.

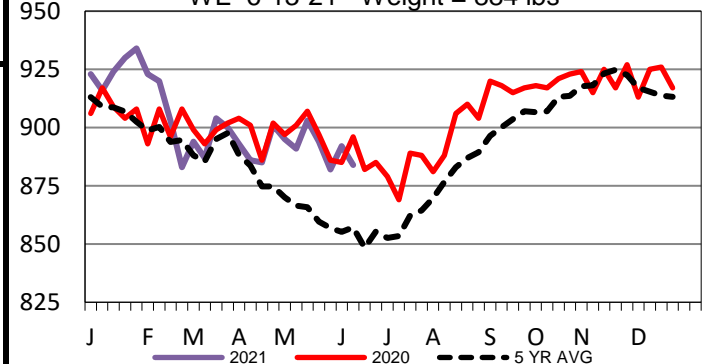
## Colorado Formula Carcass Weights

WE 6-13-21 Weight = 839 lbs



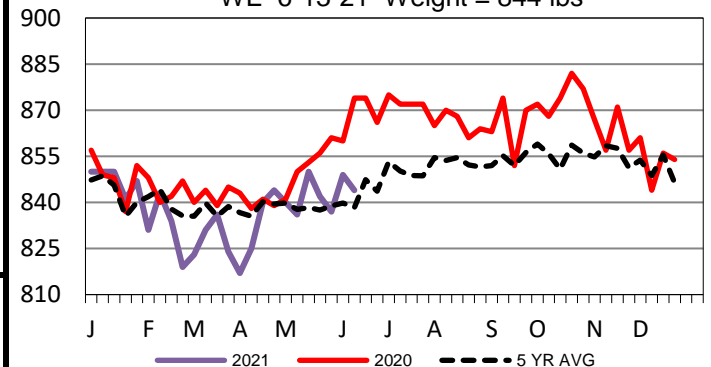
## Nebraska Formula Carcass Weights

WE 6-13-21 Weight = 884 lbs



## TX-OK-NM Formula Carcass Weights

WE 6-13-21 Weight = 844 lbs



## USDA Livestock, Poultry and Grain Market News

St. Joseph, Missouri

Phone: 816-676-7000

[stjoe.lpgmn@ams.usda.gov](mailto:stjoe.lpgmn@ams.usda.gov)