

Daily Direct Steer and Heifer Slaughter Cattle Summary

For Trade on:

Friday, June 11, 2021

LM CT100	5-AREA	LM CT109
Neg. Cash Volume:	2,230	Dressed Formula Vol: 43,966
Live Steer Avg:	\$121.77	Steer/Heifer Avg: \$193.61
Live Heifer Avg:	\$121.74	Dressed Neg. Grid Vol: 3,483
Dressed Steer Avg:	\$193.00	Steer/Heifer Avg: \$195.70
Dressed Heifer Avg:	\$193.00	TOTAL VOLUME: 49,679
LM CT106	TOTAL WK TO DATE VOLUME:	301,960
Committed:	64,301	Delivered: 117,209

LM CT118	TX-OK-NM	LM CT109
Neg. Cash Volume:	0	Dressed Formula Vol: 12,499
Live Steer Avg:	N/A	Steer/Heifer Avg: \$191.17
Live Heifer Avg:	N/A	Dressed Neg. Grid Vol: 0
Dressed Steer Avg:	N/A	Steer/Heifer Avg: N/A
Dressed Heifer Avg:	N/A	TOTAL VOLUME: 12,499
LM CT106	TOTAL WK TO DATE VOLUME:	73,090
Committed:	10,114	Delivered: 32,220

LM CT121	KANSAS	LM CT109
Neg. Cash Volume:	0	Dressed Formula Vol: 20,059
Live Steer Avg:	N/A	Steer/Heifer Avg: \$194.18
Live Heifer Avg:	N/A	Dressed Neg. Grid Vol: 58
Dressed Steer Avg:	N/A	Steer/Heifer Avg: \$195.96
Dressed Heifer Avg:	N/A	TOTAL VOLUME: 20,117
LM CT106	TOTAL WK TO DATE VOLUME:	100,543
Committed:	19,233	Delivered: 34,101

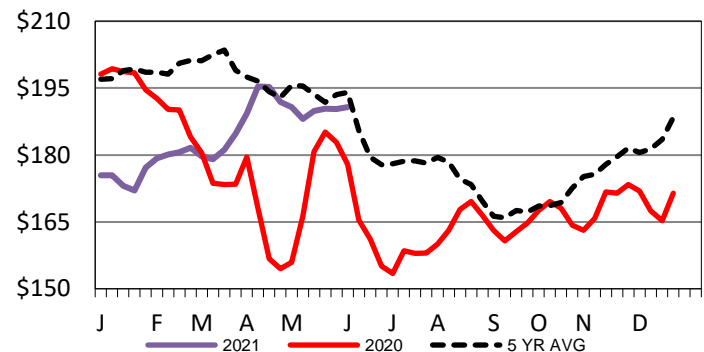
LM CT124	NEBRASKA	LM CT109
Neg. Cash Volume:	581	Dressed Formula Vol: 4,444
Live Steer Avg:	N/A	Steer/Heifer Avg: \$195.67
Live Heifer Avg:	\$121.00	Dressed Neg. Grid Vol: 1,623
Dressed Steer Avg:	\$193.00	Steer/Heifer Avg: \$195.18
Dressed Heifer Avg:	N/A	TOTAL VOLUME: 6,648
LM CT106	TOTAL WK TO DATE VOLUME:	73,079
Committed:	14,945	Delivered: 27,579

LM CT134	COLORADO	LM CT109
Neg. Cash Volume:	0	Dressed Formula Vol: 4,024
Live Steer Avg:	N/A	Steer/Heifer Avg: \$195.78
Live Heifer Avg:	N/A	Dressed Neg. Grid Vol: 227
Dressed Steer Avg:	N/A	Steer/Heifer Avg: \$197.60
Dressed Heifer Avg:	N/A	TOTAL VOLUME: 4,251
LM CT106	TOTAL WK TO DATE VOLUME:	12,545
Committed:	9,034	Delivered: 9,126

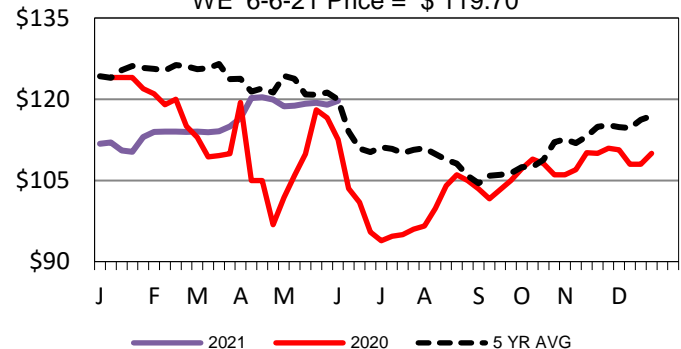
LM CT137	IA-MN	LM CT109
Neg. Cash Volume:	1,649	Dressed Formula Vol: 3,224
Live Steer Avg:	\$121.77	Steer/Heifer Avg: \$194.43
Live Heifer Avg:	\$121.92	Dressed Neg. Grid Vol: 1,734
Dressed Steer Avg:	N/A	Steer/Heifer Avg: \$196.06
Dressed Heifer Avg:	\$193.00	TOTAL VOLUME: 6,607
LM CT106	TOTAL WK TO DATE VOLUME:	38,946
Committed:	10,975	Delivered: 14,183

Friday cash trading in the Western Cornbelt was limited on light demand. A few live traded at 122.00. Tuesday was the last reported market with live and dressed at 120.00 and from 190.00-191.00, respectively. Friday in Nebraska cash trading was mostly inactive on light demand. The last live market was on Thursday at 120.00, and the last dressed market was on Tuesday from 190.00-191.00. Friday in the Southern Plains cash trading was at a standstill. Tuesday in the Texas Panhandle live traded from 119.00-120.00, and in Kansas live traded at 120.00.

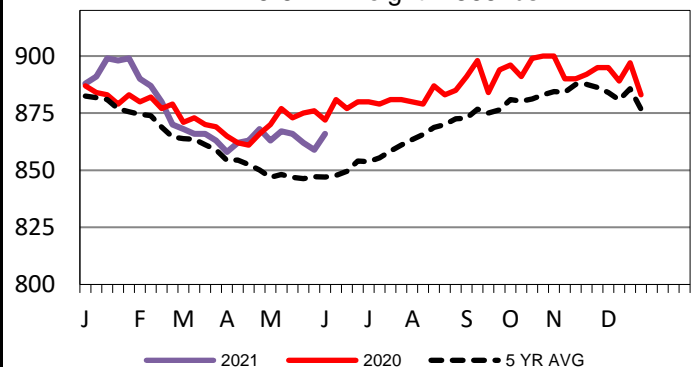
Iowa-Minnesota Wkly Dress Steer Wtd Avg
WE 6-6-21 Price = \$190.72



TX-OK-NM Wkly Live Steer Wtd Avg
WE 6-6-21 Price = \$119.70



5-Area Formula Carcass Weight
WE 6-6-21 Weight = 866 lbs



USDA Livestock, Poultry and Grain Market News

St. Joseph, Missouri

Phone: 816-676-7000

stjoe.lpgmn@ams.usda.gov