

## Daily Direct Steer and Heifer Slaughter Cattle Summary

For Trade on:

Wednesday, June 09, 2021

<a href="#">LM CT100</a>	<b>5-AREA</b>	<a href="#">LM CT109</a>
<b>Neg. Cash Volume:</b>	31,171	<b>Dressed Formula Vol:</b> 36,137
Live Steer Avg:	\$120.08	Steer/Heifer Avg: \$196.64
Live Heifer Avg:	\$119.56	<b>Dressed Neg. Grid Vol:</b> 3,409
Dressed Steer Avg:	\$190.95	Steer/Heifer Avg: \$192.66
Dressed Heifer Avg:	\$190.39	<b>TOTAL VOLUME:</b> 70,717
<a href="#">LM CT106</a>	<b>TOTAL WK TO DATE VOLUME:</b>	<b>209,929</b>
<b>Committed:</b>	<b>101,681</b>	<b>Delivered:</b> 70,740

<a href="#">LM CT118</a>	<b>TX-OK-NM</b>	<a href="#">LM CT109</a>
<b>Neg. Cash Volume:</b>	5,717	<b>Dressed Formula Vol:</b> 12,763
Live Steer Avg:	\$119.60	Steer/Heifer Avg: \$195.29
Live Heifer Avg:	\$119.09	<b>Dressed Neg. Grid Vol:</b> 0
Dressed Steer Avg:	N/A	Steer/Heifer Avg: N/A
Dressed Heifer Avg:	N/A	<b>TOTAL VOLUME:</b> 18,480
<a href="#">LM CT106</a>	<b>TOTAL WK TO DATE VOLUME:</b>	<b>48,572</b>
<b>Committed:</b>	<b>10,997</b>	<b>Delivered:</b> 19,740

<a href="#">LM CT121</a>	<b>KANSAS</b>	<a href="#">LM CT109</a>
<b>Neg. Cash Volume:</b>	10,690	<b>Dressed Formula Vol:</b> 14,253
Live Steer Avg:	\$119.80	Steer/Heifer Avg: \$194.67
Live Heifer Avg:	\$119.71	<b>Dressed Neg. Grid Vol:</b> 600
Dressed Steer Avg:	N/A	Steer/Heifer Avg: \$192.29
Dressed Heifer Avg:	N/A	<b>TOTAL VOLUME:</b> 25,543
<a href="#">LM CT106</a>	<b>TOTAL WK TO DATE VOLUME:</b>	<b>70,572</b>
<b>Committed:</b>	<b>32,192</b>	<b>Delivered:</b> 17,875

<a href="#">LM CT124</a>	<b>NEBRASKA</b>	<a href="#">LM CT109</a>
<b>Neg. Cash Volume:</b>	5,598	<b>Dressed Formula Vol:</b> 6,538
Live Steer Avg:	\$120.73	Steer/Heifer Avg: \$206.09
Live Heifer Avg:	\$120.59	<b>Dressed Neg. Grid Vol:</b> 1,746
Dressed Steer Avg:	\$192.20	Steer/Heifer Avg: \$192.36
Dressed Heifer Avg:	\$191.00	<b>TOTAL VOLUME:</b> 13,882
<a href="#">LM CT106</a>	<b>TOTAL WK TO DATE VOLUME:</b>	<b>54,144</b>
<b>Committed:</b>	<b>36,286</b>	<b>Delivered:</b> 19,015

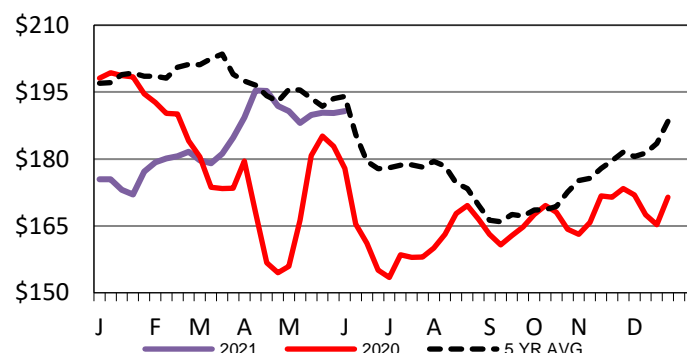
<a href="#">LM CT134</a>	<b>COLORADO</b>	<a href="#">LM CT109</a>
<b>Neg. Cash Volume:</b>	0	<b>Dressed Formula Vol:</b> 387
Live Steer Avg:	N/A	Steer/Heifer Avg: \$205.54
Live Heifer Avg:	N/A	<b>Dressed Neg. Grid Vol:</b> 570
Dressed Steer Avg:	N/A	Steer/Heifer Avg: \$197.31
Dressed Heifer Avg:	N/A	<b>TOTAL VOLUME:</b> 957
<a href="#">LM CT106</a>	<b>TOTAL WK TO DATE VOLUME:</b>	<b>3,447</b>
<b>Committed:</b>	<b>5,130</b>	<b>Delivered:</b> 5,179

<a href="#">LM CT137</a>	<b>IA-MN</b>	<a href="#">LM CT109</a>
<b>Neg. Cash Volume:</b>	9,166	<b>Dressed Formula Vol:</b> 2,312
Live Steer Avg:	\$120.38	Steer/Heifer Avg: \$193.18
Live Heifer Avg:	\$119.00	<b>Dressed Neg. Grid Vol:</b> 493
Dressed Steer Avg:	\$190.52	Steer/Heifer Avg: \$188.75
Dressed Heifer Avg:	\$190.24	<b>TOTAL VOLUME:</b> 11,971
<a href="#">LM CT106</a>	<b>TOTAL WK TO DATE VOLUME:</b>	<b>28,574</b>
<b>Committed:</b>	<b>17,076</b>	<b>Delivered:</b> 8,931

Wednesday in the Southern Plains, Nebraska and Western Cornbelt cash trading was slow on moderate demand. In Texas live traded steady to 1.00 lower from 119.00-120.00. In Kansas traded mostly steady at 120.00. In Nebraska a few live traded from 120.00-121.00. Tuesday was the last reported market with live and dressed at 120.00 and from 190.0-191.00. In the Western Cornbelt. A few live and dressed traded from 120.00-121.00 and at 190.00. Tuesday was the last reported market with live and dressed at 120.00 and from 190.00-191.00.

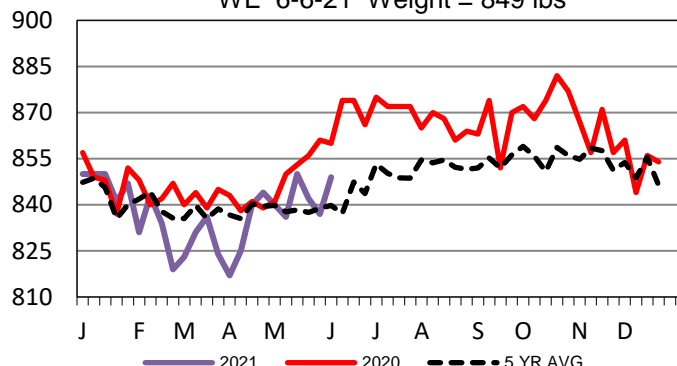
## Iowa-Minnesota Wkly Dress Steer Wtd Avg

WE 6-6-21 Price = \$190.72



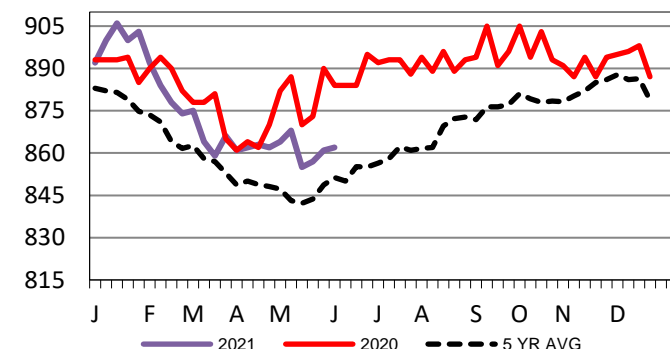
## TX-OK-NM Formula Carcass Weights

WE 6-6-21 Weight = 849 lbs



## Kansas Formula Carcass Weights

WE 6-6-21 Weight = 862 lbs



## USDA Livestock, Poultry and Grain Market News

St. Joseph, Missouri

Phone: 816-676-7000

[stjoe.lpgmn@ams.usda.gov](mailto:stjoe.lpgmn@ams.usda.gov)