

## Daily Direct Steer and Heifer Slaughter Cattle Summary

For Trade on:

Monday, June 07, 2021

<a href="#">LM CT100</a>	<b>5-AREA</b>	<a href="#">LM CT109</a>
<b>Neg. Cash Volume:</b>	1,208	<b>Dressed Formula Vol:</b> 51,550
Live Steer Avg:	N/A	Steer/Heifer Avg: \$193.35
Live Heifer Avg:	\$120.00	<b>Dressed Neg. Grid Vol:</b> 6,225
Dressed Steer Avg:	\$190.88	Steer/Heifer Avg: \$193.05
Dressed Heifer Avg:	\$189.86	<b>TOTAL VOLUME:</b> 58,983
<a href="#">LM CT106</a>	<b>TOTAL WK TO DATE VOLUME:</b>	<b>58,983</b>
<b>Committed:</b>	<b>68,134</b>	<b>Delivered:</b> 72,826

<a href="#">LM CT118</a>	<b>TX-OK-NM</b>	<a href="#">LM CT109</a>
<b>Neg. Cash Volume:</b>	0	<b>Dressed Formula Vol:</b> 15,083
Live Steer Avg:	N/A	Steer/Heifer Avg: \$192.18
Live Heifer Avg:	N/A	<b>Dressed Neg. Grid Vol:</b> 493
Dressed Steer Avg:	N/A	Steer/Heifer Avg: \$191.04
Dressed Heifer Avg:	N/A	<b>TOTAL VOLUME:</b> 15,576
<a href="#">LM CT106</a>	<b>TOTAL WK TO DATE VOLUME:</b>	<b>15,576</b>
<b>Committed:</b>	<b>18,312</b>	<b>Delivered:</b> 19,182

<a href="#">LM CT121</a>	<b>KANSAS</b>	<a href="#">LM CT109</a>
<b>Neg. Cash Volume:</b>	0	<b>Dressed Formula Vol:</b> 27,674
Live Steer Avg:	N/A	Steer/Heifer Avg: \$193.33
Live Heifer Avg:	N/A	<b>Dressed Neg. Grid Vol:</b> 2,102
Dressed Steer Avg:	N/A	Steer/Heifer Avg: \$191.10
Dressed Heifer Avg:	N/A	<b>TOTAL VOLUME:</b> 29,776
<a href="#">LM CT106</a>	<b>TOTAL WK TO DATE VOLUME:</b>	<b>29,776</b>
<b>Committed:</b>	<b>16,570</b>	<b>Delivered:</b> 19,830

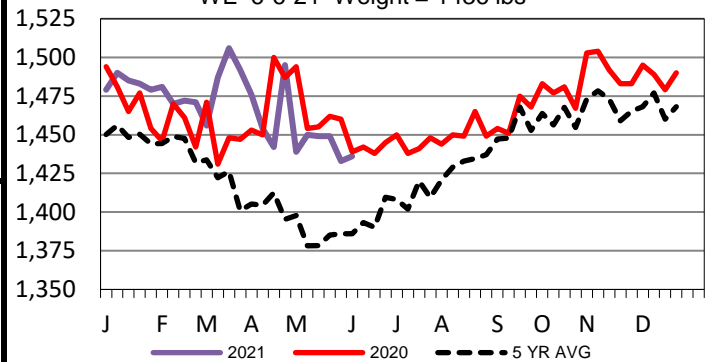
<a href="#">LM CT124</a>	<b>NEBRASKA</b>	<a href="#">LM CT109</a>
<b>Neg. Cash Volume:</b>	730	<b>Dressed Formula Vol:</b> 6,233
Live Steer Avg:	N/A	Steer/Heifer Avg: \$195.27
Live Heifer Avg:	\$120.00	<b>Dressed Neg. Grid Vol:</b> 2,356
Dressed Steer Avg:	\$190.00	Steer/Heifer Avg: \$195.28
Dressed Heifer Avg:	\$190.00	<b>TOTAL VOLUME:</b> 9,319
<a href="#">LM CT106</a>	<b>TOTAL WK TO DATE VOLUME:</b>	<b>9,319</b>
<b>Committed:</b>	<b>20,961</b>	<b>Delivered:</b> 17,027

<a href="#">LM CT134</a>	<b>COLORADO</b>	<a href="#">LM CT109</a>
<b>Neg. Cash Volume:</b>	0	<b>Dressed Formula Vol:</b> 673
Live Steer Avg:	N/A	Steer/Heifer Avg: \$198.34
Live Heifer Avg:	N/A	<b>Dressed Neg. Grid Vol:</b> 860
Dressed Steer Avg:	N/A	Steer/Heifer Avg: \$194.75
Dressed Heifer Avg:	N/A	<b>TOTAL VOLUME:</b> 1,533
<a href="#">LM CT106</a>	<b>TOTAL WK TO DATE VOLUME:</b>	<b>1,533</b>
<b>Committed:</b>	<b>2,600</b>	<b>Delivered:</b> 6,822

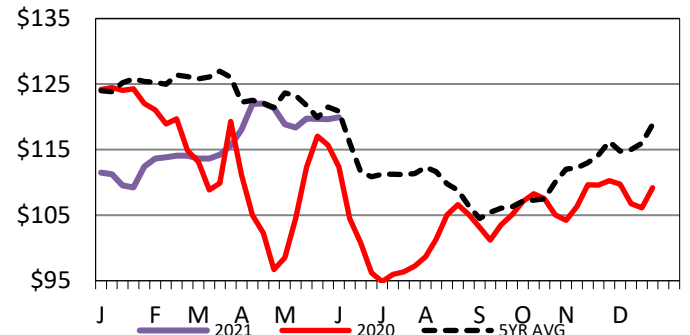
<a href="#">LM CT137</a>	<b>IA-MN</b>	<a href="#">LM CT109</a>
<b>Neg. Cash Volume:</b>	478	<b>Dressed Formula Vol:</b> 2,085
Live Steer Avg:	N/A	Steer/Heifer Avg: \$194.36
Live Heifer Avg:	N/A	<b>Dressed Neg. Grid Vol:</b> 454
Dressed Steer Avg:	\$191.62	Steer/Heifer Avg: \$189.77
Dressed Heifer Avg:	\$189.00	<b>TOTAL VOLUME:</b> 3,017
<a href="#">LM CT106</a>	<b>TOTAL WK TO DATE VOLUME:</b>	<b>3,017</b>
<b>Committed:</b>	<b>9,691</b>	<b>Delivered:</b> 9,965

For Monday in the Southern Plains negotiated cash trading was at a standstill. In Nebraska and Western Cornbelt negotiated cash trading was mostly inactive with light demand. Not enough purchases for a market trend in these regions. Last week in the 5 Area feeding regions live purchases traded at 120.00. Last week in Nebraska and Western Cornbelt dressed purchases traded from 190.00-191.00.

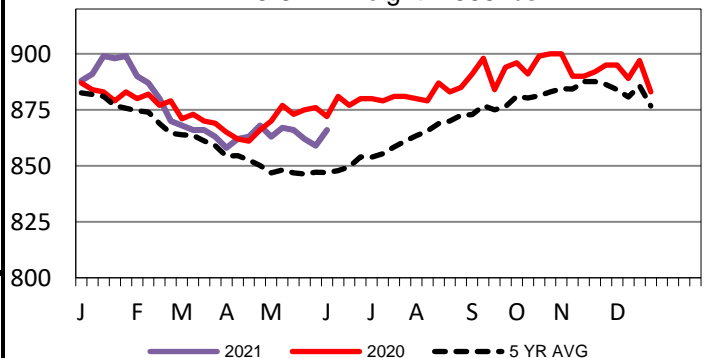
**5-Area Negotiated Cash Live Steer Weights**  
WE 6-6-21 Weight = 1436 lbs



**5-Area Live Steer Weighted Average**  
WE 6-6-21 Price = \$119.92



**5-Area Formula Carcass Weight**  
WE 6-6-21 Weight = 866 lbs



## USDA Livestock, Poultry and Grain Market News

St. Joseph, Missouri

Phone: 816-676-7000

[stjoe.lpgmn@ams.usda.gov](mailto:stjoe.lpgmn@ams.usda.gov)