

Daily Direct Steer and Heifer Slaughter Cattle Summary

For Trade on:

Tuesday, June 01, 2021

LM CT100	5-AREA	LM CT109
Neg. Cash Volume:	39	Dressed Formula Vol: 51,118
Live Steer Avg:	N/A	Steer/Heifer Avg: \$191.91
Live Heifer Avg:	N/A	Dressed Neg. Grid Vol: 5,387
Dressed Steer Avg:	N/A	Steer/Heifer Avg: \$193.90
Dressed Heifer Avg:	N/A	TOTAL VOLUME: 56,544
LM CT106	TOTAL WK TO DATE VOLUME:	56,544
Committed:	83,998	Delivered: 56,123

LM CT118	TX-OK-NM	LM CT109
Neg. Cash Volume:	0	Dressed Formula Vol: 17,838
Live Steer Avg:	N/A	Steer/Heifer Avg: \$190.32
Live Heifer Avg:	N/A	Dressed Neg. Grid Vol: 426
Dressed Steer Avg:	N/A	Steer/Heifer Avg: \$190.13
Dressed Heifer Avg:	N/A	TOTAL VOLUME: 18,264
LM CT106	TOTAL WK TO DATE VOLUME:	18,264
Committed:	32,468	Delivered: 13,319

LM CT121	KANSAS	LM CT109
Neg. Cash Volume:	0	Dressed Formula Vol: 21,974
Live Steer Avg:	N/A	Steer/Heifer Avg: \$191.78
Live Heifer Avg:	N/A	Dressed Neg. Grid Vol: 1,365
Dressed Steer Avg:	N/A	Steer/Heifer Avg: \$190.27
Dressed Heifer Avg:	N/A	TOTAL VOLUME: 23,339
LM CT106	TOTAL WK TO DATE VOLUME:	23,339
Committed:	18,185	Delivered: 16,469

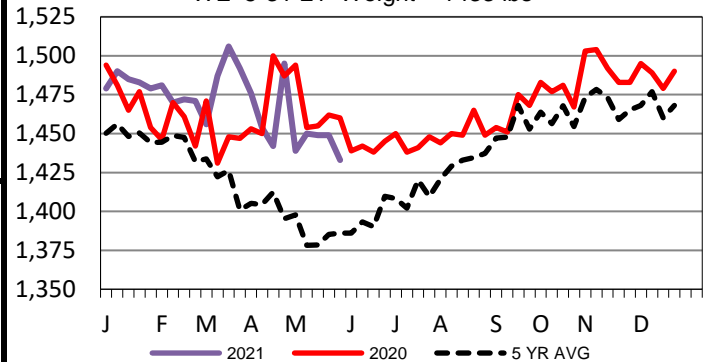
LM CT124	NEBRASKA	LM CT109
Neg. Cash Volume:	0	Dressed Formula Vol: 6,651
Live Steer Avg:	N/A	Steer/Heifer Avg: \$194.94
Live Heifer Avg:	N/A	Dressed Neg. Grid Vol: 2,613
Dressed Steer Avg:	N/A	Steer/Heifer Avg: \$195.71
Dressed Heifer Avg:	N/A	TOTAL VOLUME: 9,264
LM CT106	TOTAL WK TO DATE VOLUME:	9,264
Committed:	11,346	Delivered: 13,041

LM CT134	COLORADO	LM CT109
Neg. Cash Volume:	0	Dressed Formula Vol: 3,088
Live Steer Avg:	N/A	Steer/Heifer Avg: \$192.84
Live Heifer Avg:	N/A	Dressed Neg. Grid Vol: 90
Dressed Steer Avg:	N/A	Steer/Heifer Avg: \$194.14
Dressed Heifer Avg:	N/A	TOTAL VOLUME: 3,178
LM CT106	TOTAL WK TO DATE VOLUME:	3,178
Committed:	14,127	Delivered: 3,706

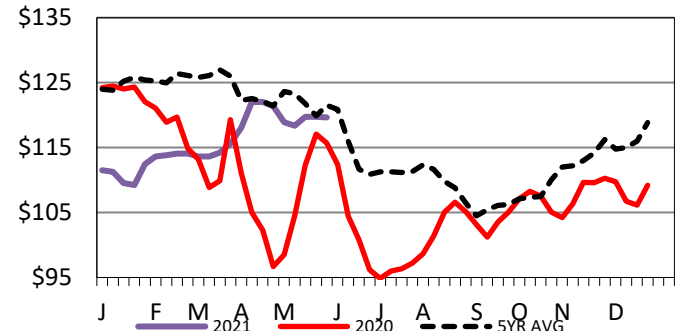
LM CT137	IA-MN	LM CT109
Neg. Cash Volume:	39	Dressed Formula Vol: 2,046
Live Steer Avg:	N/A	Steer/Heifer Avg: \$195.78
Live Heifer Avg:	N/A	Dressed Neg. Grid Vol: 974
Dressed Steer Avg:	N/A	Steer/Heifer Avg: \$196.10
Dressed Heifer Avg:	N/A	TOTAL VOLUME: 3,059
LM CT106	TOTAL WK TO DATE VOLUME:	3,059
Committed:	7,872	Delivered: 9,588

Tuesday cash trading was at a standstill in the Southern Plains and Nebraska. In the Western Cornbelt cash trading was mostly inactive with very light demand. Last week in the Texas Panhandle live purchases traded mostly at 120.00. In Kansas for the prior week live purchases traded from 119.00-120.00. For previous week in Nebraska live and dressed purchases traded at 120.00 and 191.00, respectively. Last week in the Western Cornbelt live and dressed purchases traded at 120.00 and from 189.00-191.00, respectively.

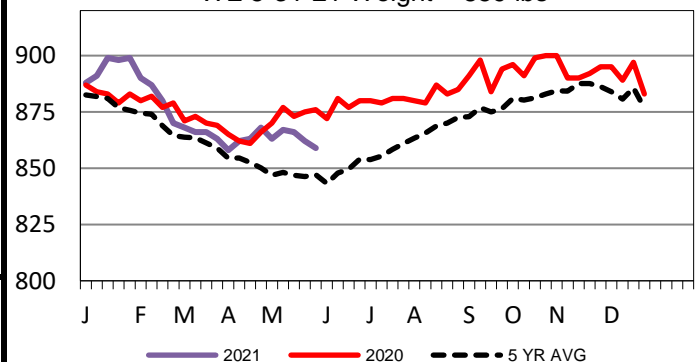
5-Area Negotiated Cash Live Steer Weights
WE 5-31-21 Weight = 1433 lbs



5-Area Live Steer Weighted Average
WE 5-31-21 Price = \$119.64



5-Area Formula Carcass Weight
WE 5-31-21 Weight = 859 lbs



USDA Livestock, Poultry and Grain Market News

St. Joseph, Missouri

Phone: 816-676-7000

stjoe.lpgmn@ams.usda.gov