

## Daily Direct Steer and Heifer Slaughter Cattle Summary

For Trade on:

Tuesday, May 25, 2021

<a href="#">LM CT100</a>	<b>5-AREA</b>	<a href="#">LM CT109</a>
<b>Neg. Cash Volume:</b>	40,235	<b>Dressed Formula Vol:</b> 35,778
Live Steer Avg:	\$119.76	Steer/Heifer Avg: \$196.03
Live Heifer Avg:	\$119.80	<b>Dressed Neg. Grid Vol:</b> 1,644
Dressed Steer Avg:	\$190.98	Steer/Heifer Avg: \$192.17
Dressed Heifer Avg:	\$190.85	<b>TOTAL VOLUME:</b> 77,657
<a href="#">LM CT106</a>	<b>TOTAL WK TO DATE VOLUME:</b>	<b>143,351</b>
<b>Committed:</b>	<b>113,107</b>	<b>Delivered:</b> 73,041

<a href="#">LM CT118</a>	<b>TX-OK-NM</b>	<a href="#">LM CT109</a>
<b>Neg. Cash Volume:</b>	3,862	<b>Dressed Formula Vol:</b> 12,662
Live Steer Avg:	\$119.95	Steer/Heifer Avg: \$192.60
Live Heifer Avg:	\$120.00	<b>Dressed Neg. Grid Vol:</b> 0
Dressed Steer Avg:	N/A	Steer/Heifer Avg: N/A
Dressed Heifer Avg:	N/A	<b>TOTAL VOLUME:</b> 16,524
<a href="#">LM CT106</a>	<b>TOTAL WK TO DATE VOLUME:</b>	<b>40,040</b>
<b>Committed:</b>	<b>18,097</b>	<b>Delivered:</b> 22,899

<a href="#">LM CT121</a>	<b>KANSAS</b>	<a href="#">LM CT109</a>
<b>Neg. Cash Volume:</b>	6,557	<b>Dressed Formula Vol:</b> 11,257
Live Steer Avg:	\$119.67	Steer/Heifer Avg: \$193.96
Live Heifer Avg:	\$119.41	<b>Dressed Neg. Grid Vol:</b> 0
Dressed Steer Avg:	N/A	Steer/Heifer Avg: N/A
Dressed Heifer Avg:	\$191.00	<b>TOTAL VOLUME:</b> 17,814
<a href="#">LM CT106</a>	<b>TOTAL WK TO DATE VOLUME:</b>	<b>44,179</b>
<b>Committed:</b>	<b>33,075</b>	<b>Delivered:</b> 18,391

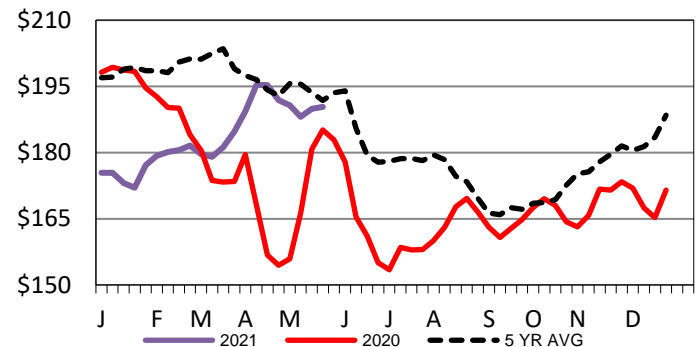
<a href="#">LM CT124</a>	<b>NEBRASKA</b>	<a href="#">LM CT109</a>
<b>Neg. Cash Volume:</b>	22,165	<b>Dressed Formula Vol:</b> 6,036
Live Steer Avg:	\$119.98	Steer/Heifer Avg: \$203.92
Live Heifer Avg:	\$120.00	<b>Dressed Neg. Grid Vol:</b> 1,107
Dressed Steer Avg:	\$191.01	Steer/Heifer Avg: \$191.66
Dressed Heifer Avg:	\$191.29	<b>TOTAL VOLUME:</b> 29,308
<a href="#">LM CT106</a>	<b>TOTAL WK TO DATE VOLUME:</b>	<b>38,260</b>
<b>Committed:</b>	<b>39,581</b>	<b>Delivered:</b> 17,777

<a href="#">LM CT134</a>	<b>COLORADO</b>	<a href="#">LM CT109</a>
<b>Neg. Cash Volume:</b>	1,120	<b>Dressed Formula Vol:</b> 3,719
Live Steer Avg:	\$120.00	Steer/Heifer Avg: \$203.05
Live Heifer Avg:	N/A	<b>Dressed Neg. Grid Vol:</b> 161
Dressed Steer Avg:	\$191.00	Steer/Heifer Avg: \$196.97
Dressed Heifer Avg:	N/A	<b>TOTAL VOLUME:</b> 5,000
<a href="#">LM CT106</a>	<b>TOTAL WK TO DATE VOLUME:</b>	<b>8,216</b>
<b>Committed:</b>	<b>5,500</b>	<b>Delivered:</b> 4,745

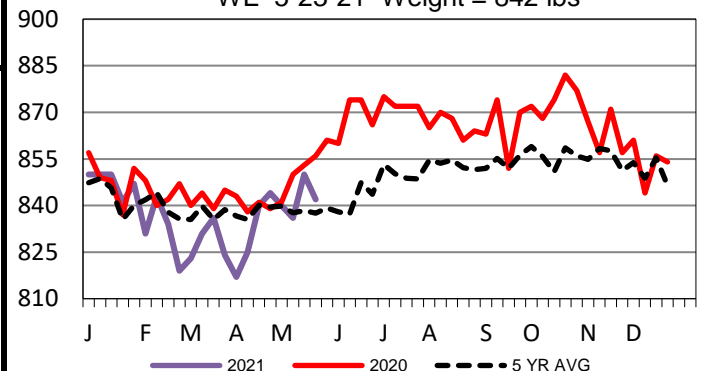
<a href="#">LM CT137</a>	<b>IA-MN</b>	<a href="#">LM CT109</a>
<b>Neg. Cash Volume:</b>	6,531	<b>Dressed Formula Vol:</b> 2,299
Live Steer Avg:	\$118.92	Steer/Heifer Avg: \$193.66
Live Heifer Avg:	\$120.15	<b>Dressed Neg. Grid Vol:</b> 376
Dressed Steer Avg:	\$190.88	Steer/Heifer Avg: \$191.64
Dressed Heifer Avg:	\$190.19	<b>TOTAL VOLUME:</b> 9,206
<a href="#">LM CT106</a>	<b>TOTAL WK TO DATE VOLUME:</b>	<b>13,355</b>
<b>Committed:</b>	<b>16,854</b>	<b>Delivered:</b> 9,229

Tuesday cash trading in the Southern Plains was slow on light demand with live steady to 1.00 higher at 120.00 in Texas and from 119.00-120.00 in Kansas. In Nebraska, cash trading and demand were light to moderate with live steady at 120.00 and dressed steady to 1.00 higher at 191.00. Cash trading in the Western Cornbelt was slow on light demand. Last week in the Western Cornbelt live and dressed traded at 120.00 and from 188.00-191.00. In Colorado, cash trading was mostly inactive on light demand. Last week in Colorado live and dressed traded at 120.00 and 191.00.

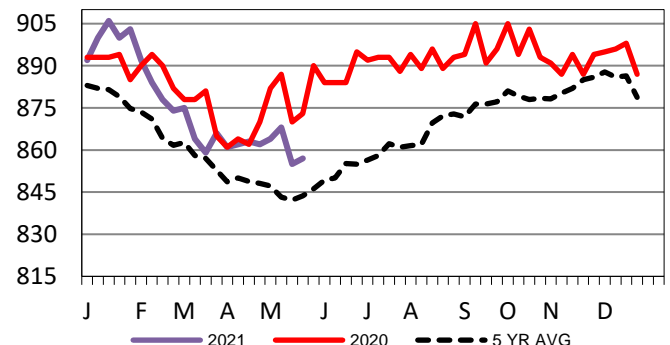
**Iowa-Minnesota Wkly Dress Steer Wtd Avg**  
WE 5-23-21 Price = \$190.38



**TX-OK-NM Formula Carcass Weights**  
WE 5-23-21 Weight = 842 lbs



**Kansas Formula Carcass Weights**  
WE 5-23-21 Weight = 857 lbs



## USDA Livestock, Poultry and Grain Market News

St. Joseph, Missouri

Phone: 816-676-7000

[stjoe.lpgmn@ams.usda.gov](mailto:stjoe.lpgmn@ams.usda.gov)