

Daily Direct Steer and Heifer Slaughter Cattle Summary

For Trade on:

Friday, May 21, 2021

LM CT100	5-AREA	LM CT109
Neg. Cash Volume:	1,005	Dressed Formula Vol: 41,531
Live Steer Avg:	\$120.00	Steer/Heifer Avg: \$193.21
Live Heifer Avg:	\$120.00	Dressed Neg. Grid Vol: 2,424
Dressed Steer Avg:	\$192.00	Steer/Heifer Avg: \$192.43
Dressed Heifer Avg:	N/A	TOTAL VOLUME: 44,960
LM CT106	TOTAL WK TO DATE VOLUME:	280,674
Committed:	67,951	Delivered: 120,769

LM CT118	TX-OK-NM	LM CT109
Neg. Cash Volume:	0	Dressed Formula Vol: 13,270
Live Steer Avg:	N/A	Steer/Heifer Avg: \$190.44
Live Heifer Avg:	N/A	Dressed Neg. Grid Vol: 0
Dressed Steer Avg:	N/A	Steer/Heifer Avg: N/A
Dressed Heifer Avg:	N/A	TOTAL VOLUME: 13,270
LM CT106	TOTAL WK TO DATE VOLUME:	72,407
Committed:	21,424	Delivered: 32,202

LM CT121	KANSAS	LM CT109
Neg. Cash Volume:	0	Dressed Formula Vol: 12,966
Live Steer Avg:	N/A	Steer/Heifer Avg: \$193.43
Live Heifer Avg:	N/A	Dressed Neg. Grid Vol: 202
Dressed Steer Avg:	N/A	Steer/Heifer Avg: \$190.00
Dressed Heifer Avg:	N/A	TOTAL VOLUME: 13,168
LM CT106	TOTAL WK TO DATE VOLUME:	90,628
Committed:	21,208	Delivered: 34,179

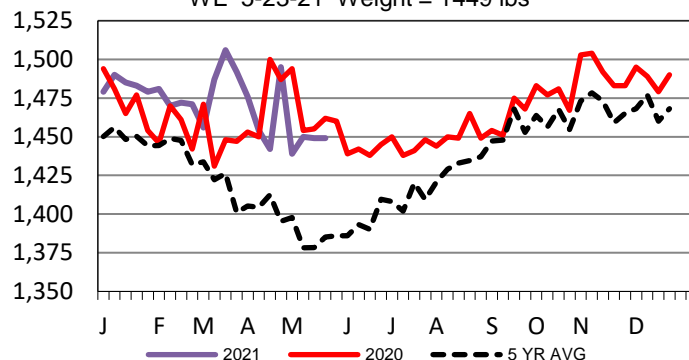
LM CT124	NEBRASKA	LM CT109
Neg. Cash Volume:	127	Dressed Formula Vol: 6,614
Live Steer Avg:	N/A	Steer/Heifer Avg: \$195.68
Live Heifer Avg:	\$120.00	Dressed Neg. Grid Vol: 1,349
Dressed Steer Avg:	N/A	Steer/Heifer Avg: \$193.57
Dressed Heifer Avg:	N/A	TOTAL VOLUME: 8,090
LM CT106	TOTAL WK TO DATE VOLUME:	62,257
Committed:	11,060	Delivered: 30,759

LM CT134	COLORADO	LM CT109
Neg. Cash Volume:	0	Dressed Formula Vol: 4,827
Live Steer Avg:	N/A	Steer/Heifer Avg: \$197.13
Live Heifer Avg:	N/A	Dressed Neg. Grid Vol: 169
Dressed Steer Avg:	N/A	Steer/Heifer Avg: \$193.27
Dressed Heifer Avg:	N/A	TOTAL VOLUME: 4,996
LM CT106	TOTAL WK TO DATE VOLUME:	21,378
Committed:	7,642	Delivered: 7,900

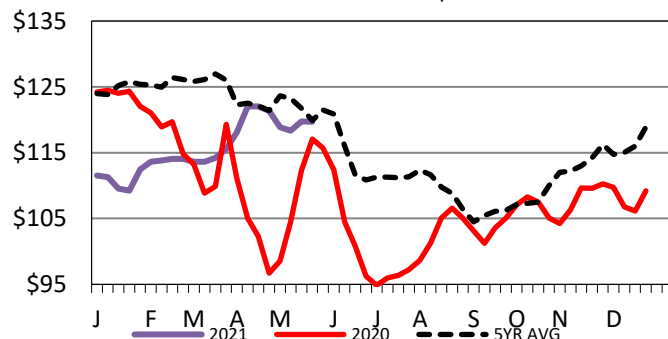
LM CT137	IA-MN	LM CT109
Neg. Cash Volume:	878	Dressed Formula Vol: 4,201
Live Steer Avg:	\$120.00	Steer/Heifer Avg: \$192.85
Live Heifer Avg:	N/A	Dressed Neg. Grid Vol: 987
Dressed Steer Avg:	\$192.00	Steer/Heifer Avg: \$191.82
Dressed Heifer Avg:	N/A	TOTAL VOLUME: 6,066
LM CT106	TOTAL WK TO DATE VOLUME:	35,650
Committed:	6,617	Delivered: 15,729

Friday cash trading in Nebraska and Western Cornbelt was mostly inactive with very light demand. Not enough purchases for a market trend. In the Southern Plains and Colorado cash trading was at a standstill. In the Texas Panhandle on Tuesday live traded from 119.00-120.00. In Kansas on Thursday live traded at 119.00. In Nebraska on Thursday live traded at 120.00 and on Tuesday dressed traded at 191.00. In the Western Cornbelt on Thursday live and dressed traded at 120.00 and from 188.00-191.00, respectively. Last week in Colorado live traded at 120.00.

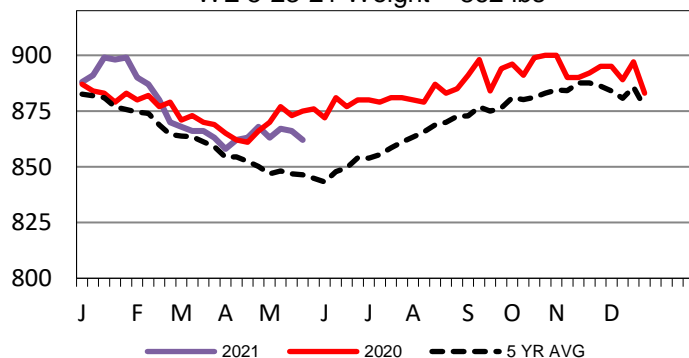
5-Area Negotiated Cash Live Steer Weights
WE 5-23-21 Weight = 1449 lbs



5-Area Live Steer Weighted Average
WE 5-23-21 Price = \$119.72



5-Area Formula Carcass Weight
WE 5-23-21 Weight = 862 lbs



USDA Livestock, Poultry and Grain Market News

St. Joseph, Missouri

Phone: 816-676-7000

stjoe.lpgmn@ams.usda.gov