

Daily Direct Steer and Heifer Slaughter Cattle Summary

For Trade on:

Wednesday, May 19, 2021

LM CT100	5-AREA	LM CT109
Neg. Cash Volume:	20,527	Dressed Formula Vol: 38,704
Live Steer Avg:	\$119.46	Steer/Heifer Avg: \$193.67
Live Heifer Avg:	\$119.87	Dressed Neg. Grid Vol: 2,529
Dressed Steer Avg:	\$190.12	Steer/Heifer Avg: \$191.47
Dressed Heifer Avg:	\$190.66	TOTAL VOLUME: 61,760
LM CT106	TOTAL WK TO DATE VOLUME:	235,714
Committed:	58,239	Delivered: 70,688

LM CT118	TX-OK-NM	LM CT109
Neg. Cash Volume:	955	Dressed Formula Vol: 12,679
Live Steer Avg:	\$118.36	Steer/Heifer Avg: \$190.46
Live Heifer Avg:	N/A	Dressed Neg. Grid Vol: 0
Dressed Steer Avg:	N/A	Steer/Heifer Avg: N/A
Dressed Heifer Avg:	N/A	TOTAL VOLUME: 13,634
LM CT106	TOTAL WK TO DATE VOLUME:	59,137
Committed:	14,895	Delivered: 19,332

LM CT121	KANSAS	LM CT109
Neg. Cash Volume:	3,958	Dressed Formula Vol: 14,211
Live Steer Avg:	\$118.96	Steer/Heifer Avg: \$191.55
Live Heifer Avg:	N/A	Dressed Neg. Grid Vol: 737
Dressed Steer Avg:	\$191.00	Steer/Heifer Avg: \$190.54
Dressed Heifer Avg:	N/A	TOTAL VOLUME: 18,906
LM CT106	TOTAL WK TO DATE VOLUME:	77,460
Committed:	16,961	Delivered: 20,614

LM CT124	NEBRASKA	LM CT109
Neg. Cash Volume:	5,988	Dressed Formula Vol: 5,943
Live Steer Avg:	\$119.85	Steer/Heifer Avg: \$201.87
Live Heifer Avg:	\$119.92	Dressed Neg. Grid Vol: 871
Dressed Steer Avg:	\$191.39	Steer/Heifer Avg: \$192.94
Dressed Heifer Avg:	\$191.00	TOTAL VOLUME: 12,802
LM CT106	TOTAL WK TO DATE VOLUME:	54,167
Committed:	16,610	Delivered: 19,503

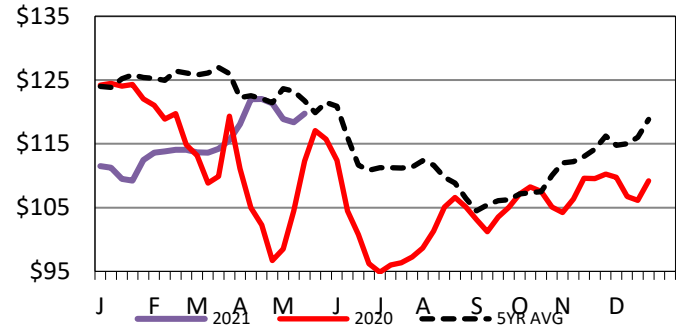
LM CT134	COLORADO	LM CT109
Neg. Cash Volume:	51	Dressed Formula Vol: 3,776
Live Steer Avg:	N/A	Steer/Heifer Avg: \$200.32
Live Heifer Avg:	\$120.00	Dressed Neg. Grid Vol: 507
Dressed Steer Avg:	N/A	Steer/Heifer Avg: \$189.45
Dressed Heifer Avg:	\$191.00	TOTAL VOLUME: 4,334
LM CT106	TOTAL WK TO DATE VOLUME:	16,382
Committed:	1,554	Delivered: 3,796

LM CT137	IA-MN	LM CT109
Neg. Cash Volume:	9,575	Dressed Formula Vol: 2,293
Live Steer Avg:	\$119.94	Steer/Heifer Avg: \$192.61
Live Heifer Avg:	\$119.25	Dressed Neg. Grid Vol: 414
Dressed Steer Avg:	\$189.80	Steer/Heifer Avg: \$192.53
Dressed Heifer Avg:	\$190.45	TOTAL VOLUME: 12,282
LM CT106	TOTAL WK TO DATE VOLUME:	29,584
Committed:	8,219	Delivered: 7,443

Thursday in Kansas, Nebraska and Western Cornbelt cash trading was slow on moderate demand. In Kansas live traded steady at 119.00. In Nebraska live traded steady at 120.00, on Tuesday dressed traded from 190.00-191.00. In the Western Cornbelt compared to last week live and dressed traded mostly steady at 120.00 and from 188.00-191.00. Thursday in Texas and Colorado cash trading was mostly inactive on very light demand. In Texas on Tuesday with live purchases from 119.00-120.00. Last week in Colorado live purchases traded at 120.00.

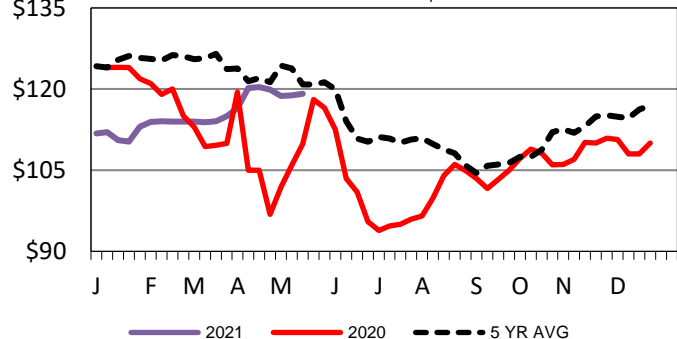
5-Area Live Steer Weighted Average

WE 5-16-21 Price = \$119.73



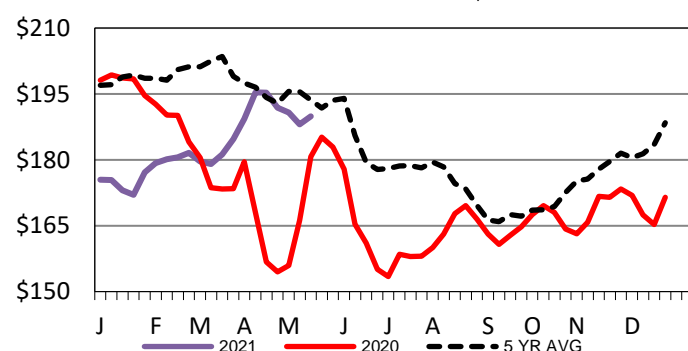
TX-OK-NM Wkly Live Steer Wtd Avg

WE 5-16-21 Price = \$119.14



Iowa-Minnesota Wkly Dress Steer Wtd Avg

WE 5-16-21 Price = \$189.88



USDA Livestock, Poultry and Grain Market News

St. Joseph, Missouri

Phone: 816-676-7000

stjoe.lpgmn@ams.usda.gov