

Daily Direct Steer and Heifer Slaughter Cattle Summary

For Trade on:

Tuesday, May 18, 2021

LM CT100	5-AREA	LM CT109
Neg. Cash Volume:	27,741	Dressed Formula Vol: 39,906
Live Steer Avg:	\$119.99	Steer/Heifer Avg: \$194.23
Live Heifer Avg:	\$119.55	Dressed Neg. Grid Vol: 1,942
Dressed Steer Avg:	\$190.55	Steer/Heifer Avg: \$197.86
Dressed Heifer Avg:	\$191.44	TOTAL VOLUME: 69,589
LM CT106	TOTAL WK TO DATE VOLUME:	129,646
Committed:	116,279	Delivered: 69,781

LM CT118	TX-OK-NM	LM CT109
Neg. Cash Volume:	4,097	Dressed Formula Vol: 12,598
Live Steer Avg:	\$119.77	Steer/Heifer Avg: \$193.18
Live Heifer Avg:	\$119.28	Dressed Neg. Grid Vol: 0
Dressed Steer Avg:	N/A	Steer/Heifer Avg: N/A
Dressed Heifer Avg:	N/A	TOTAL VOLUME: 16,695
LM CT106	TOTAL WK TO DATE VOLUME:	37,192
Committed:	42,462	Delivered: 20,363

LM CT121	KANSAS	LM CT109
Neg. Cash Volume:	6,403	Dressed Formula Vol: 12,431
Live Steer Avg:	\$119.35	Steer/Heifer Avg: \$189.90
Live Heifer Avg:	\$119.28	Dressed Neg. Grid Vol: 439
Dressed Steer Avg:	\$191.00	Steer/Heifer Avg: \$201.81
Dressed Heifer Avg:	N/A	TOTAL VOLUME: 19,273
LM CT106	TOTAL WK TO DATE VOLUME:	47,176
Committed:	41,544	Delivered: 18,739

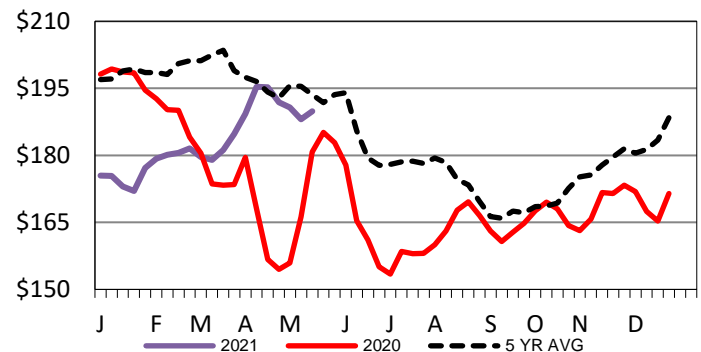
LM CT124	NEBRASKA	LM CT109
Neg. Cash Volume:	13,738	Dressed Formula Vol: 6,326
Live Steer Avg:	\$120.17	Steer/Heifer Avg: \$203.46
Live Heifer Avg:	\$120.29	Dressed Neg. Grid Vol: 1,000
Dressed Steer Avg:	\$190.54	Steer/Heifer Avg: \$198.58
Dressed Heifer Avg:	\$191.68	TOTAL VOLUME: 21,064
LM CT106	TOTAL WK TO DATE VOLUME:	26,523
Committed:	20,729	Delivered: 14,790

LM CT134	COLORADO	LM CT109
Neg. Cash Volume:	313	Dressed Formula Vol: 6,318
Live Steer Avg:	\$120.00	Steer/Heifer Avg: \$196.23
Live Heifer Avg:	\$120.00	Dressed Neg. Grid Vol: 66
Dressed Steer Avg:	N/A	Steer/Heifer Avg: \$211.02
Dressed Heifer Avg:	N/A	TOTAL VOLUME: 6,697
LM CT106	TOTAL WK TO DATE VOLUME:	10,480
Committed:	3,853	Delivered: 7,372

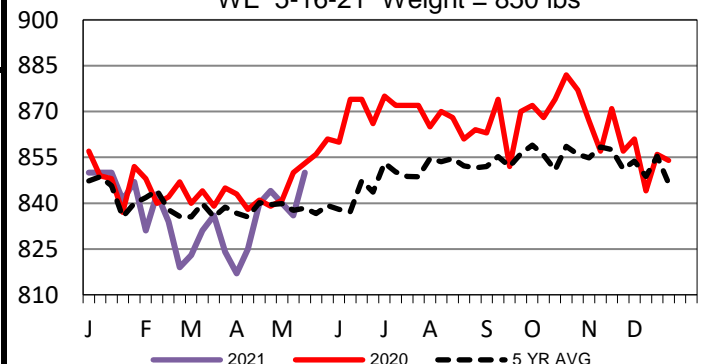
LM CT137	IA-MN	LM CT109
Neg. Cash Volume:	3,190	Dressed Formula Vol: 2,465
Live Steer Avg:	\$120.91	Steer/Heifer Avg: \$192.48
Live Heifer Avg:	\$119.83	Dressed Neg. Grid Vol: 437
Dressed Steer Avg:	\$190.56	Steer/Heifer Avg: \$190.26
Dressed Heifer Avg:	\$190.66	TOTAL VOLUME: 6,092
LM CT106	TOTAL WK TO DATE VOLUME:	8,974
Committed:	7,691	Delivered: 8,517

Tuesday in the Southern Plains and Nebraska cash trading was slow with light to moderate demand. In Texas live steady to 0.50 higher 119.00-120.00. In Kansas live steady to 1.00 lower 119.00-120.00, mostly 119.00. In Nebraska live steady 120.00-121.00, mostly 120.00, dressed steady to 1.00 lower from 190.00-191.00. Tuesday in the Western Cornbelt cash trading was limited on light demand. Last week in the Western Cornbelt live and dressed at 120.00 and 188.00-191.00. Tuesday in Colorado cash trading was inactive on very light demand. Last week live traded at 120.00.

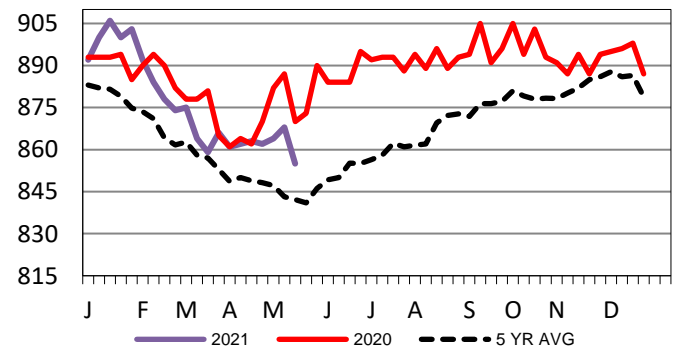
Iowa-Minnesota Wkly Dress Steer Wtd Avg
WE 5-16-21 Price = \$189.88



TX-OK-NM Formula Carcass Weights
WE 5-16-21 Weight = 850 lbs



Kansas Formula Carcass Weights
WE 5-16-21 Weight = 855 lbs



USDA Livestock, Poultry and Grain Market News

St. Joseph, Missouri

Phone: 816-676-7000

stjoe.lpgmn@ams.usda.gov