

Daily Direct Steer and Heifer Slaughter Cattle Summary

For Trade on:

Tuesday, May 11, 2021

LM CT100	5-AREA	LM CT109
Neg. Cash Volume:	18,061	Dressed Formula Vol: 39,011
Live Steer Avg:	\$119.73	Steer/Heifer Avg: \$194.59
Live Heifer Avg:	\$120.11	Dressed Neg. Grid Vol: 2,237
Dressed Steer Avg:	\$190.99	Steer/Heifer Avg: \$196.70
Dressed Heifer Avg:	\$191.60	TOTAL VOLUME: 59,309
LM CT106	TOTAL WK TO DATE VOLUME:	103,524
Committed:	81,201	Delivered: 71,711

LM CT118	TX-OK-NM	LM CT109
Neg. Cash Volume:	292	Dressed Formula Vol: 13,706
Live Steer Avg:	\$0.00	Steer/Heifer Avg: \$191.51
Live Heifer Avg:	\$119.50	Dressed Neg. Grid Vol: 0
Dressed Steer Avg:	\$0.00	Steer/Heifer Avg: \$0.00
Dressed Heifer Avg:	\$0.00	TOTAL VOLUME: 13,998
LM CT106	TOTAL WK TO DATE VOLUME:	26,183
Committed:	20,409	Delivered: 19,531

LM CT121	KANSAS	LM CT109
Neg. Cash Volume:	16	Dressed Formula Vol: 12,180
Live Steer Avg:	\$0.00	Steer/Heifer Avg: \$191.95
Live Heifer Avg:	\$0.00	Dressed Neg. Grid Vol: 257
Dressed Steer Avg:	\$190.00	Steer/Heifer Avg: \$191.64
Dressed Heifer Avg:	\$0.00	TOTAL VOLUME: 12,453
LM CT106	TOTAL WK TO DATE VOLUME:	30,933
Committed:	27,251	Delivered: 19,052

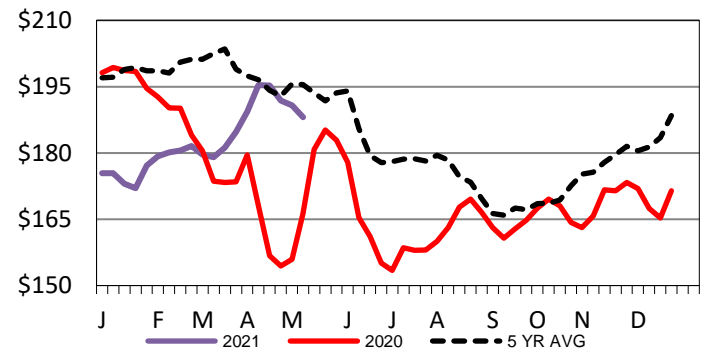
LM CT124	NEBRASKA	LM CT109
Neg. Cash Volume:	8,628	Dressed Formula Vol: 6,104
Live Steer Avg:	\$121.50	Steer/Heifer Avg: \$202.15
Live Heifer Avg:	\$120.57	Dressed Neg. Grid Vol: 1,288
Dressed Steer Avg:	\$191.08	Steer/Heifer Avg: \$197.77
Dressed Heifer Avg:	\$191.64	TOTAL VOLUME: 16,020
LM CT106	TOTAL WK TO DATE VOLUME:	25,182
Committed:	17,921	Delivered: 17,977

LM CT134	COLORADO	LM CT109
Neg. Cash Volume:	0	Dressed Formula Vol: 4,517
Live Steer Avg:	\$0.00	Steer/Heifer Avg: \$202.45
Live Heifer Avg:	\$0.00	Dressed Neg. Grid Vol: 235
Dressed Steer Avg:	\$0.00	Steer/Heifer Avg: \$197.72
Dressed Heifer Avg:	\$0.00	TOTAL VOLUME: 4,752
LM CT106	TOTAL WK TO DATE VOLUME:	5,212
Committed:	3,388	Delivered: 5,805

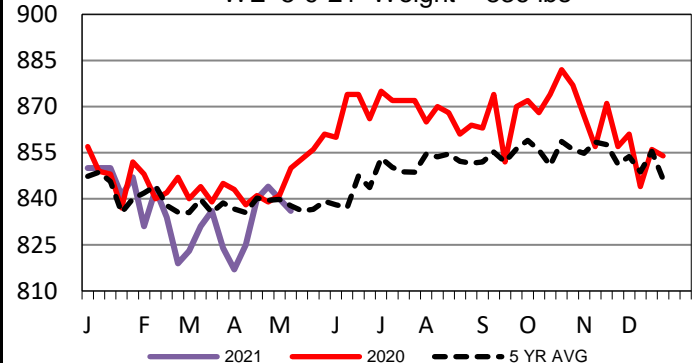
LM CT137	IA-MN	LM CT109
Neg. Cash Volume:	9,125	Dressed Formula Vol: 2,661
Live Steer Avg:	\$119.52	Steer/Heifer Avg: \$191.92
Live Heifer Avg:	\$119.87	Dressed Neg. Grid Vol: 457
Dressed Steer Avg:	\$190.85	Steer/Heifer Avg: \$195.99
Dressed Heifer Avg:	\$191.50	TOTAL VOLUME: 12,243
LM CT106	TOTAL WK TO DATE VOLUME:	16,602
Committed:	12,232	Delivered: 9,346

Tuesday in Nebraska and Western Cornbelt cash trading slow with light to moderate demand. In Nebraska dressed traded mostly 1.00-3.00 higher at 191.00. Last week live traded at 118.00. In the Western Cornbelt live traded mostly 1.00 higher from 118.00-120.00. Last week dressed traded from 187.00-190.00. Tuesday in the Southern Plains and Colorado cash trading was mostly inactive on light demand. Last week in the Texas Panhandle live traded from 117.50-119.00. In Kansas live traded at 119.00. In Colorado two weeks ago live traded from 119.00-120.00.

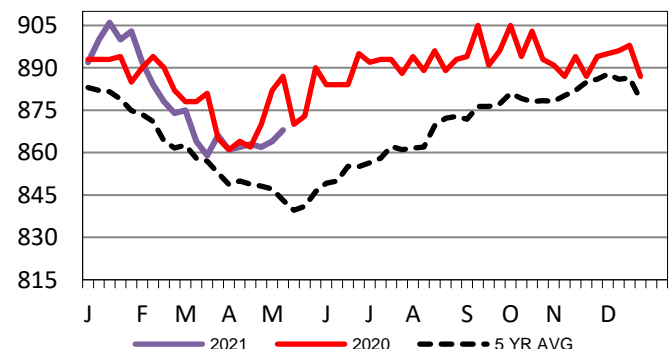
Iowa-Minnesota Wkly Dress Steer Wtd Avg
WE 5-9-21 Price = \$188.10



TX-OK-NM Formula Carcass Weights
WE 5-9-21 Weight = 836 lbs



Kansas Formula Carcass Weights
WE 5-9-21 Weight = 868 lbs



USDA Livestock, Poultry and Grain Market News

St. Joseph, Missouri

Phone: 816-676-7000

stjoe.lpgmn@ams.usda.gov